



Equipped with AEM® Dryflow™ Filter
No Oil Required!

INSTALLATION INSTRUCTIONS

PART NUMBER:

21-433B (Blue Finish)

21-433C (Gun Metal Grey Finish)

21-433P (Vacuum Metalized Chrome-VMC)

21-433R (Red Finish)

2000–2005 MITSUBISHI Eclipse L4-2.4L C.A.R.B. E.O. # D-670-15

**Intake systems for vehicles listed are 50
state legal. See AEMIntakes.com for CARB
status on each part for a specific vehicle.**

PARTS LIST

Description	Qty.	Part Number
Air Filter Assy. 2.75 X 5" Dry Ele.	1	21-202DK
Upper Pipe	1	2-448
Lower Pipe	1	2-447
Adaptor, MAF	1	2-606
Hose; 3/8"ID X 6.5"L	1	5-10065
Nut, M6 Hex Serrated	5	444.460.04
Washer; 1"D X 1/4 Hole Fender	1	08160
Mount, Rubber 1" X 6mm	1	1228599
Bolt, Hex M6 X 1.0 X 16mm	1	1-2030
Hose, Silicone 2.75x3" Blk.	1	5-275
Elbow, 2.75-90 2.4"& .9"	1	5-280-1
Hose, Adapter 2.75/3.00 X 3" Blk.	1	5-273
1/2" Bnd. Hose Clamp, 2.90"-3.75"	1	9452
1/2" Bnd. Hose Clamp, 2.31-3.25"	5	9444
1/2" Bnd. Hose Clamp, 2.56"-3.50"	1	9448
Bolt, Socket M6-1 X 30mm	4	1-2020
Hose Clamp, 3/4"	2	4093-5

Read and understand these instructions **BEFORE** attempting to install this product. Failure to follow installation instructions and not using the provided hardware may damage the intake tube, throttle body and engine.

1. Preparing Vehicle

- a. Make sure vehicle is parked on level surface.
- b. Set parking brake.
- c. If engine has run in the past two hours, let it cool down.
- d. Disconnect both battery terminals.
- e. Raise the front of the vehicle with a jack. Refer to your owner's manual for proper jack and jack stand placement to properly support vehicle. Support your vehicle using properly rated jack stands before wheel removal or while working under the vehicle.

NEVER WORK UNDER A VEHICLE WITHOUT USING JACK STANDS.

- f. Remove the driver side wheel.
- g. Remove the driver's side fender liner.
- h. Do not discard stock components after removal of the factory system.

2. Removal of stock system



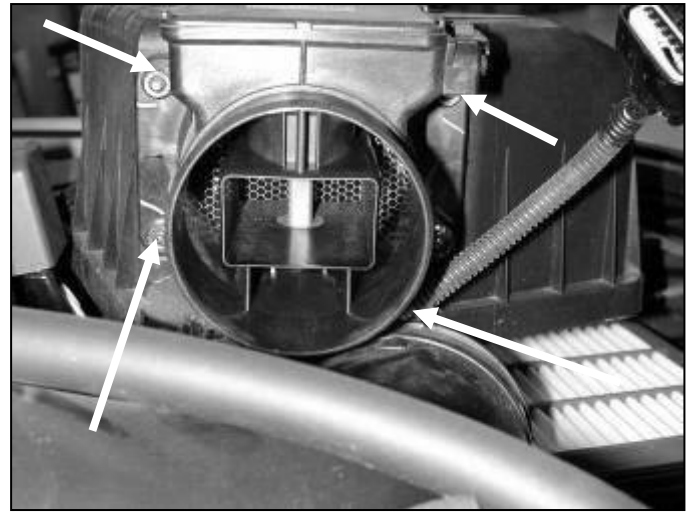
a. Stock air box system installed.



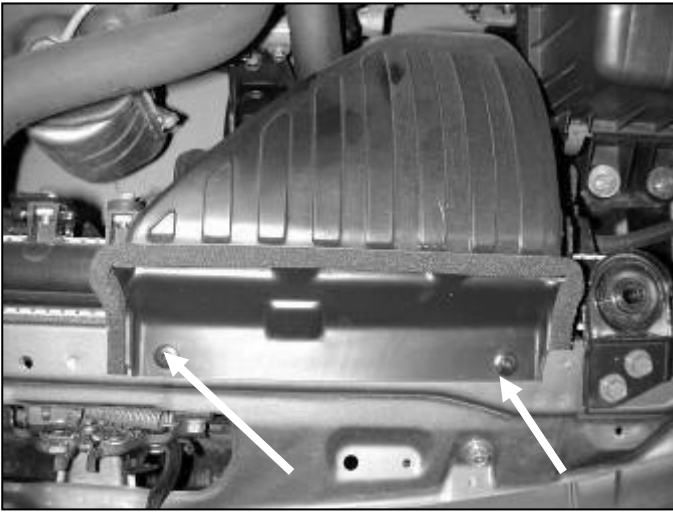
b. Pull breather hose off of valve cover. Loosen the upper and lower hose clamps on the stock inlet tube.



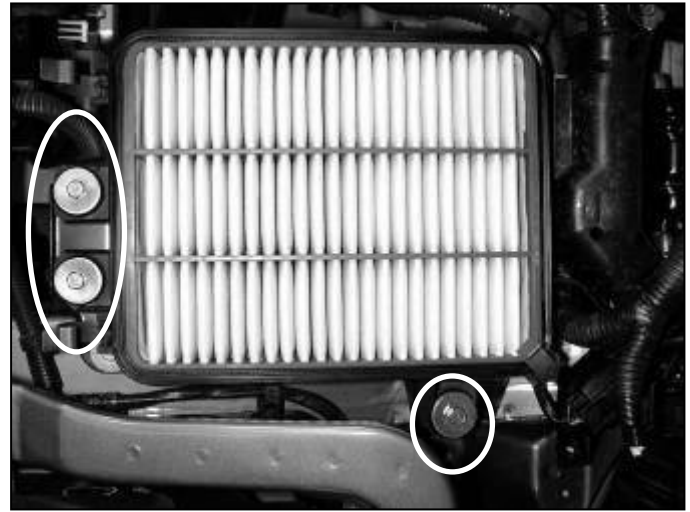
c. Unplug the MAF sensor. Remove the stock inlet pipe. Release four clamps on the air box and remove the upper air box from the vehicle.



d. Loosen the four nuts that secure the MAF sensor to the air box. Carefully remove and set aside the MAF sensor.



e. Release the air snorkel. Press in the centers of the plastic rivets and remove.



f. Loosen the three bolts securing the air box in place. Remove air box and snorkel from vehicle.



g. Remove lower mounting bracket.



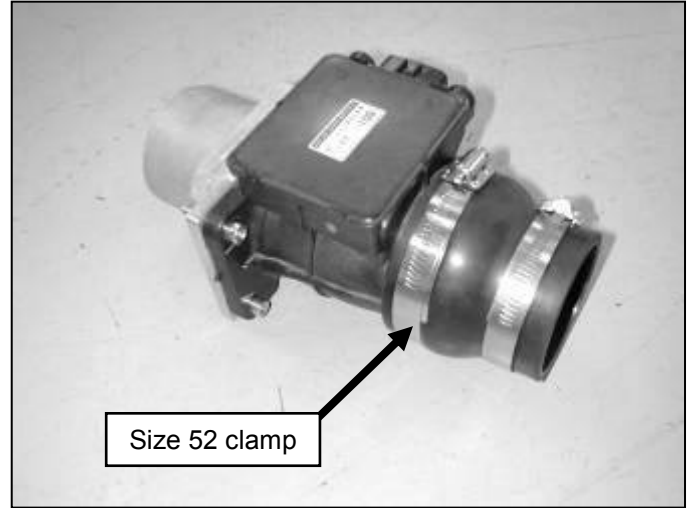
h. Loosen the three bolts that secure the lower air box and remove from the vehicle.

3. Installation of AEM® intake system.

- a. When installing the intake system, do not completely tighten the hose clamps or mounting hardware until instructed to do so.



- b. Attach the MAF adapter to the MAF sensor using the supplied bolts and lock nuts.



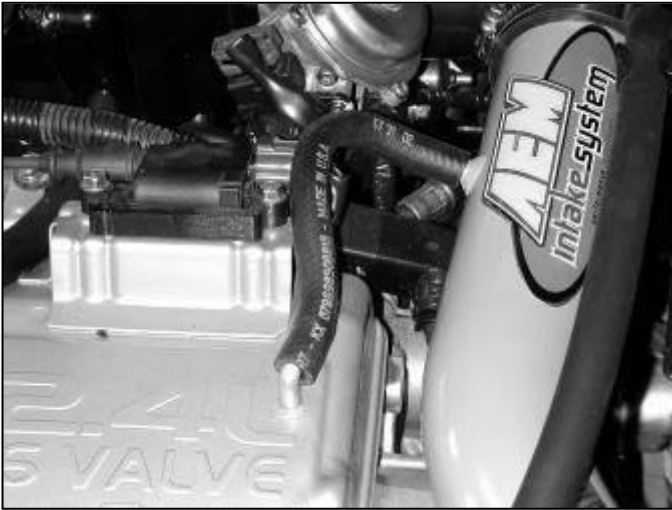
- c. Attach the rubber reducer to the MAF sensor using the size 52 hose clamp.



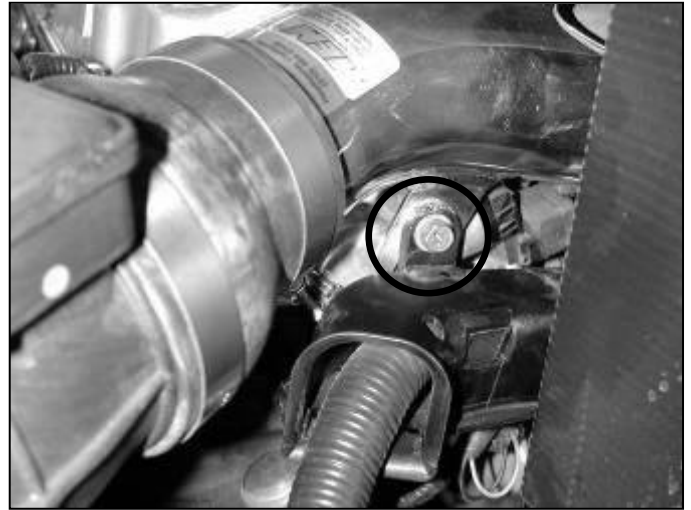
- d. Place the rubber elbow with two hose clamps onto the throttle body. The longer end attaches to the throttle body.



- e. Insert the upper intake pipe into the rubber elbow. Ensure the nipple on the intake pipe is pointing toward the center of the vehicle as shown.



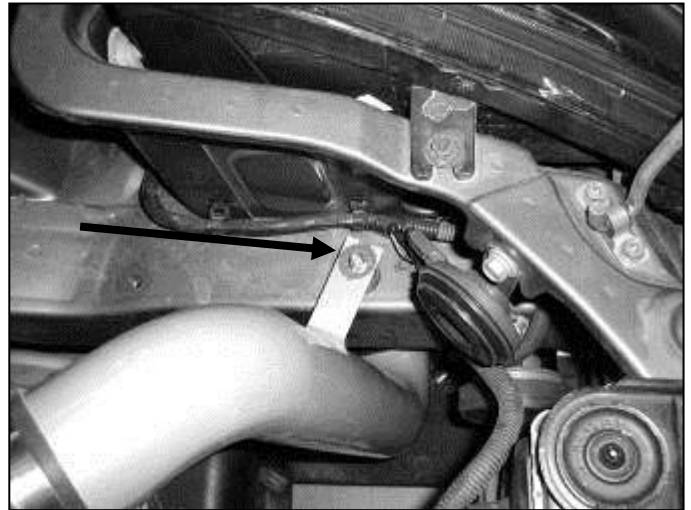
f. Install the supplied breather hose as shown. Secure both ends with supplied 3/4" hose clamps.



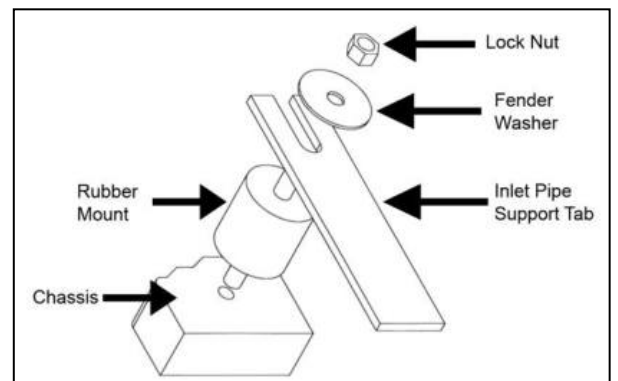
g. Attach the bracket on the upper pipe to the engine using the supplied 6mm bolt and washer. Place the pipe's tab behind the stock plastic tab. Attach the MAF sensor assembly to the intake pipe as shown.



h. Plug the wiring harness into the MAF sensor and attach the lower intake pipe to MAF sensor using the provided silicone hose and two hose clamps.



i. Install rubber mount into frame and attach the lower intake pipe's support bracket as shown. Secure with a lock nut and fender washer but do not completely tighten the lock nut. See the diagram below for proper installation of the rubber mount.



j. Proper installation of the rubber mount.



k. Install the AEM[®] air filter onto the lower end of the intake pipe. Check the clearance of the air filter and tighten the hose clamp once proper fitment is achieved.

4. Reassemble Vehicle

- a. **Wheel:** Install the driver's side wheel using the factory torque specification (see owner's manual).
- b. **Fender Liner:** Install the fender liner that was removed in Step 1g.
- c. Position the inlet pipes for the best fitment. Be sure that the pipes or any other components do not contact any part of the vehicle. Tighten the rubber mount, all bolts, and hose clamps.
- d. Check for proper hood clearance. Re-adjust pipes if necessary and re-tighten them.
- e. Inspect the engine bay for any loose tools and check that all fasteners that were moved or removed are properly tightened.
- f. Reconnect battery terminals and start engine. Let the vehicle idle for 3 minutes. Perform a final inspection before driving the vehicle.

5. CARB Sticker Placement

- a. The C.A.R.B. exemption sticker, (attached), must be visible under the hood so that an emissions inspector can see it when the vehicle is required to be tested for emissions. California requires testing every two years, other states may vary.

6. Service and Maintenance

- a. AEM Induction Systems requires cleaning the intake system's air filter element every 100,000 miles. When used in dusty or off-road environments, our filters will require cleaning more often. We recommend that you visually inspect your filter once every 25,000 miles to determine if the screen is still visible. When the screen is no longer visible some place on the filter element, it is time to clean it. To clean, purchase our Synthetic air filter cleaner, part number 99-0624 and follow the easy instructions.
- b. Use window cleaner to clean your powder coated AEM[®] intake tube.
NOTE: DO NOT USE aluminum polish on powder coated AEM[®] intake tubes.

For technical inquiries
e-mail us at
sales@aemintakes.com
or
call us at
800.992.3000

AEM Air Intake System Warranty Policy

AEM® warrants that its intake systems will last for the life of your vehicle. AEM will not honor this warranty due to mechanical damage (i.e. improper installation or fitment), damage from misuse, accidents or flying debris. AEM will not warrant its powder coating if the finish has been cleaned with a hydrocarbon-based solvent. The powder coating should only be cleaned with a mild soap and water solution. Proof of purchase of both the vehicle and AEM intake system is required for redemption of a warranty claim.

This warranty is limited to the repair or replacement of the AEM part. In no event shall this warranty exceed the original purchase price of the AEM part nor shall AEM be responsible for special, incidental or consequential damages or cost incurred due to the failure of this product. Warranty claims to AEM must be transportation prepaid and accompanied with dated proof of purchase. This warranty applies only to the original purchaser of product and is nontransferable. Improper use or installation, use for racing, accident, abuse, unauthorized repairs or alterations voids this warranty. AEM disclaims any liability for consequential damages due to breach of any written or implied warranty on all products manufactured by AEM. Warranty returns will only be accepted by AEM when accompanied by a valid Return Merchandise Authorization (RMA) number. Credit for defective products will be issued pending inspection. Product must be received by AEM within 30 days of the date RMA is issued.

If you have a warranty issue, please call (800) 992-3000 and our customer service department will assist you. A proof of purchase is required for all AEM warranty claims.

**Intake systems for vehicles listed are 50
state legal. See AEMIntakes.com for CARB
status on each part for a specific vehicle.**