



Equipped with AEM® Dryflow™ Filter
No Oil Required!

INSTALLATION INSTRUCTIONS PART NUMBER

21-735WR (Wrinkle Red)

21-735WB (Wrinkle Black)

2015-16	Subaru	WRX STI	H4-2.5L	C.A.R.B E.O. # D-670-24
2017	Subaru	WRX STI	H4-2.5L	

Some intake systems are not legal for sale or use on any pollution controlled motor vehicle in California or states adopting CA emission procedures. To know if a part number is legal in CA on your vehicle, visit AEMIntakes.com.

ITEM NO.	PART NUMBER	DESCRIPTION	QTY.
1	20-8525	HEAT SHIELD, 2015 SUBARU STI	1
2	1228599	MOUNT, RUBBER 1" X 6MM	1
3	08160	WASHER; 1"D X 1/4 HOLE FENDER	1
4	444.460.04	NUT; M6 HEX SERRATED	2
5	5-275	HOSE; SILICONE 2.75 X 3" BLK	1
6	9444	HOSE CLAMP, 2.31-3.25"	2
7	21-2029D	AIR FILTER; 2.75" X 9" DRYFLOW	1
8	9448	1/2" BNDHOSE CLAMP,2.56"-3.50"	1
9	102494	EDGE TRIM, 18"	1
10	8-4013	EDGE TRIM, 13"	1
11	102466	EDGE TRIM; 1/16"GAP, 12"L	1
12	2-478	TUBE; INTAKE	1
13	1-2051	BOLT, BTN HD M4-0.7 X 6MM	2
14	1-2038	BOLT; HEX/FLANGE M6-1 X 20	1
15	1-127	ZIP TIE,8" TREE PUSH-MNT	1
16	8-206	CAP, 1-5/8"	1



Read and understand these instructions **BEFORE** attempting to install this product. Failure to follow installation instructions and not using the provided hardware may damage the intake tube, throttle body and engine. If you need any assistance please call 1-800-858-3333 to speak with a representative in our Customer Service Center before returning the product.

1. Preparing Vehicle

- a. Make sure vehicle is parked on level surface.
- b. Set the parking brake.
- c. If engine has run in the past two hours, let it cool down.
- d. Disconnect negative battery terminal.
- e. Do not discard stock components after removal of the factory system.
- f. Open the air intake kit package and make sure all parts are included.

Tools Needed:

Screw driver
10MM socket
Socket Driver
Side Cutters
4MM Hex Key

2. Removal of stock system



a. Remove the two plastic clips and the factory fresh air inlet duct.



b. Depress the tab on the mass air flow sensor plug and disconnect it from the sensor.



c. Remove the two bolts on the fender that secure the bracket. These will be re-used.



d. Remove the bolt that secures the air box to the engine bay.



e. Loosen the hose clamps at the sound tube and the stock intake tube. Then remove the complete air box from the vehicle. **NOTE:** Do not discard your stock equipment.



f. Remove the mass air flow sensor from the stock air box. This will be reused in 3a.

3. Installation of AEM® intake system.

a. When installing the intake system, do not completely tighten the hose clamps or mounting hardware until instructed to do so.



a. Install the mass air flow sensor that was removed in 2f) into the AEM intake tube with the supplied hardware (1-2051) with 4MM Hex Key.



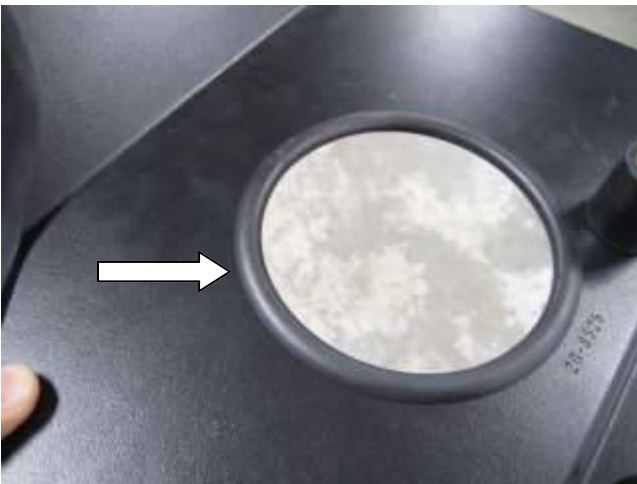
b. Install the supplied cap over the sound tube diaphragm (8-206).



c. Install the rubber mount (1228599) onto the heat shield and secure with nut (444.460.04) on the back side.



d. Install the supplied edge trims (102494 & 8-4013) onto the outer part of the heat shield.



e. Install the supplied edge trim (102466) onto the inner part of the heat shield.



f. Completed heat shield assembly.



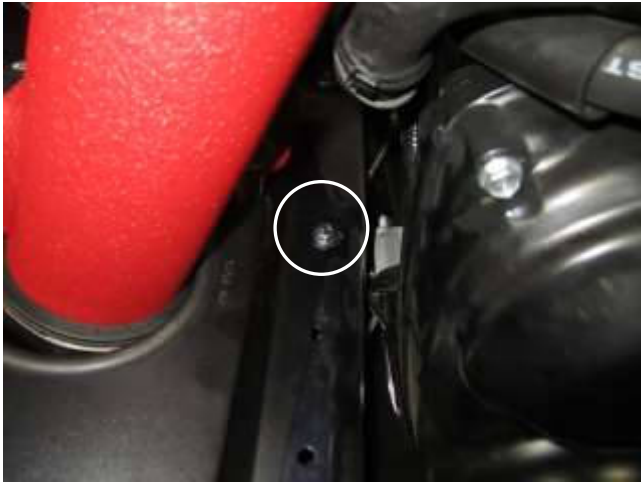
g. Install the AEM filter onto the AEM intake tube through the heat shield and tighten the hose clamp (9448)



h. Install the filter, heat shield, and tube assembly into the vehicle.



i. Re-install the nuts that were removed 2c) and tighten.



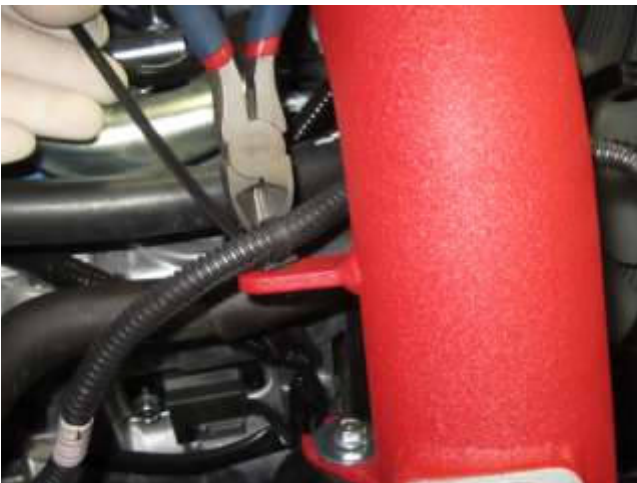
j. Secure the heat shield to engine bay with the supplied bolt (1-2038) .



k. Install the supplied coupler (5-275) and tighten the two hose clamps (9444) onto the AEM intake tube and compressor inlet tube.



l. Align the bracket with the rubber mount and tighten the washer (08160) and nut (444.460.04).



m. Secure the mass air flow sensor loom to the AEM intake tube with supplied push-in zip tie.



n. Plug in the mass air flow sensor connector that was detached in 2b.



Stock Intake Installed.



AEM Intake Installed.

4. Reassemble Vehicle

- a. Position the inlet pipes for the best fitment. Be sure that the pipes or any other components do not contact any part of the vehicle.
- b. Check for proper hood clearance. Re-adjust pipes if necessary and re-tighten them.
- c. Inspect the engine bay for any loose tools and check that all fasteners that were moved or removed are properly tightened.
- d. Reconnect negative battery terminal and start engine. Let the vehicle idle for 3 minutes. Perform a final inspection before driving the vehicle.

5. CARB Sticker Placement

- a. The C.A.R.B. exemption sticker, (attached), must be visible under the hood so than an emissions inspector can see it when the vehicle is required to be tested for emissions. California requires testing every two years, other states may vary.

6. Service and Maintenance

- a. AEM Induction Systems requires cleaning the intake system's air filter element every 100,000 miles. When used in dusty or off-road environments, our filters will require cleaning more often. We recommend that you visually inspect your filter once every 25,000 miles to determine if the screen is still visible. When the screen is no longer visible some place on the filter element, it is time to clean it. To clean, purchase our Synthetic air filter cleaner, part number 1-1000 and follow the easy instructions.
- b. Use window cleaner to clean your powder coated AEM® intake tube.

NOTE: DO NOT USE aluminum polish on powder coated AEM® intake tubes.

For technical inquiries
e-mail us at
sales@aemintakes.com
or
call us at
800.992.3000

AEM Air Intake System Warranty Policy

AEM® warrants that its intake systems will last for the life of your vehicle. AEM® will not honor this warranty due to mechanical damage (i.e. improper installation or fitment), damage from misuse, accidents or flying debris. AEM® will not warrant its powder coating if the finish has been cleaned with a hydrocarbon-based solvent. The powder coating should only be cleaned with a mild soap and water solution. Proof of purchase of both the vehicle and AEM® intake system is required for redemption of a warranty claim.

This warranty is limited to the repair or replacement of the AEM® part. In no event shall this warranty exceed the original purchase price of the AEM® part nor shall AEM® be responsible for special, incidental or consequential damages or cost incurred due to the failure of this product. Warranty claims to AEM® must be transportation prepaid and accompanied with dated proof of purchase. This warranty applies only to the original purchaser of product and is nontransferable. Improper use or installation, use for racing, accident, abuse, unauthorized repairs or alterations voids this warranty. AEM® disclaims any liability for consequential damages due to breach of any written or implied warranty on all products manufactured by AEM®. Warranty returns will only be accepted by AEM® when accompanied by a valid Return Merchandise Authorization (RMA) number. Credit for defective products will be issued pending inspection. Product must be received by AEM® within 30 days of the date RMA is issued.

If you have a warranty issue, please call (800) 992-3000 and our customer service department will assist you. A proof of purchase is required for all AEM® warranty claims.

Some intake systems are not legal for sale or use on any pollution controlled motor vehicle in California or states adopting CA emission procedures. To know if a part number is legal in CA on your vehicle, visit AEMIntakes.com.