



Equipped with AEM® Dryflow™ Filter
No Oil Required!

INSTALLATION INSTRUCTIONS

PART NUMBER

21-773C (Gun Metal Gray Finish)

2015-2018

MAZDA

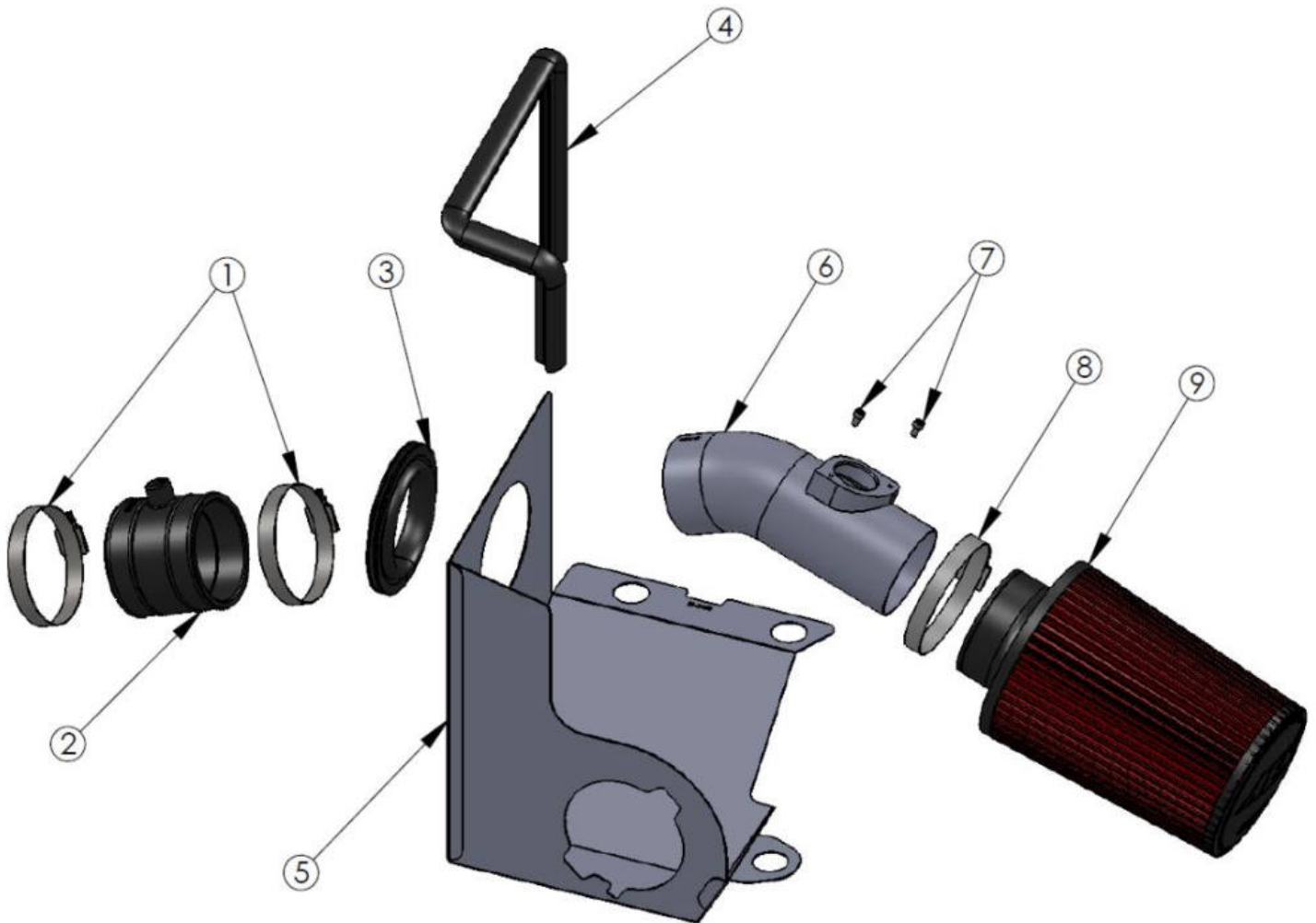
3

2.0L

NOT LEGAL FOR SALE OR USE ON ANY POLLUTION
CONTROLLED MOTOR VEHICLE IN CALIFORNIA OR
STATES ADOPTING CALIFORNIA EMISSION PROCEDURES.

See aemintakes.com for CARB status on each part for a specific vehicle

ITEM NO.	PART NUMBER	DESCRIPTION	QTY.
1	9444	HOSE CLAMP, 2.31-3.25"	2
2	5-1048	HOSE; 2-3/4" ID X 3" L WITH NIPPLE MAZDA 3	1
3	8-4011	EDGE TRIM, 11"	1
4	8-4016	EDGE TRIM, 16"	1
5	20-8563	HEAT SHIELD, 21-773, 2015 MAZDA 3, TB/PC	1
6	2-1552	INTAKE TUBE; 2.75"OD X 8", 21-773, GUNMETAL GRAY	1
7	07733	BOLT; M4 - 0.07 8MM, A/H CAP, SS	2
8	9448	1/2" BNDHOSE CLAMP,2.56"-3.50"	1
9	21-2157D	ELEMENT PARTS KIT 2-3/4"FLG, 5-1/2B, 4-3/4T	1



Read and understand these instructions **BEFORE** attempting to install this product. Failure to follow installation instructions and not using the provided hardware may damage the intake tube, throttle body and engine.

Tools Needed:

- Screw driver
- 10MM socket
- Socket Driver
- Side Cutters
- 4MM Hex Key

1. Preparing Vehicle

- a. Make sure vehicle is parked on level surface.
- b. Set the parking brake.
- c. If engine has run in the past two hours, let it cool down.
- d. Disconnect negative battery terminal.
- e. Do not discard stock components after removal of the factory system.
- f. Open the air intake kit package and make sure all parts are included.

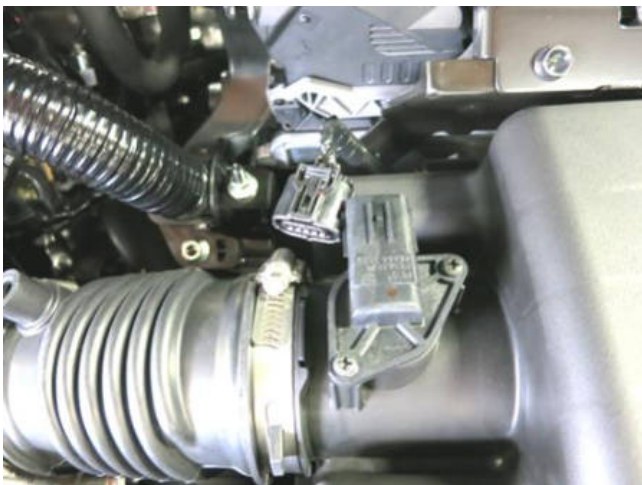
2. Removal of stock system



a. Remove engine cover by gently pulling it up and away from the top of the engine.



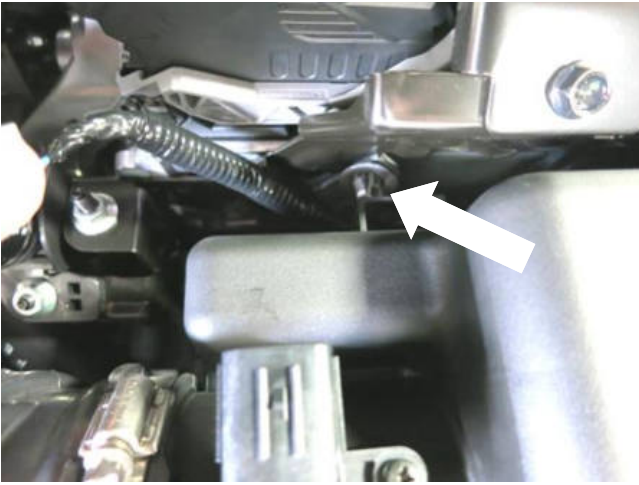
b. Remove breather hose from factory coupler.



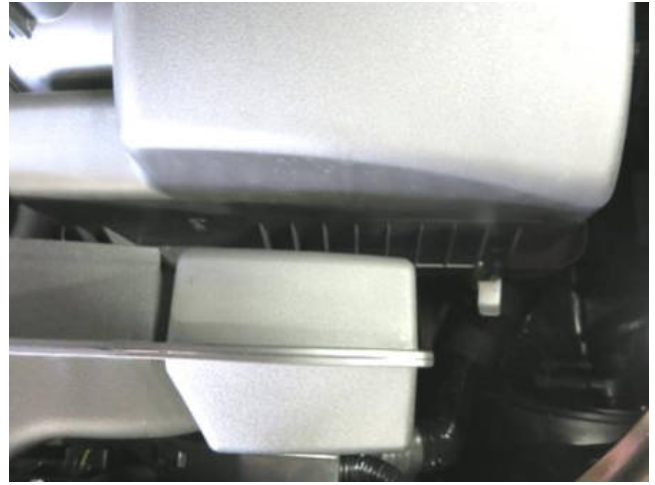
c. Unplug MAF sensor harness.



d. Loosen hose clamp securing coupler to throttle body.



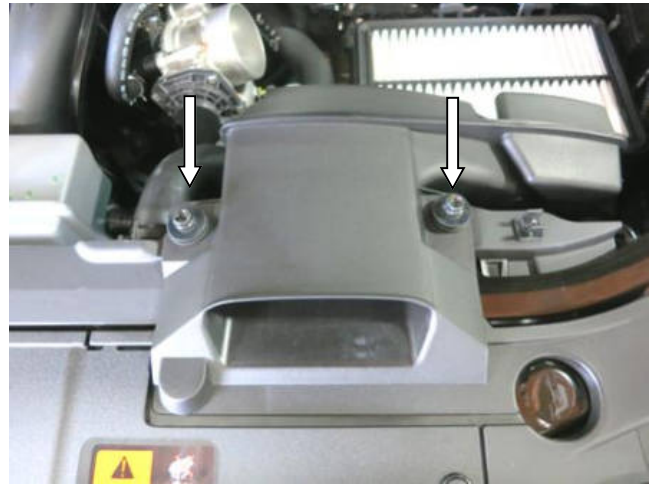
e. Use needle nose pliers to unclip wire harness from air box.



f. Unclip air box lid from lower air box.



g. Remove the air box lid along with the air inlet hose.



h. Loosen the two M6 bolts securing the factory cold air inlet scoop.



i. Gently remove factory lower air box and factory cold air inlet scoop.

3. Installation of AEM® intake system.

a. When installing the intake system, do not completely tighten the hose clamps or mounting hardware until instructed to do so.



a. Unclip the two plastic retainers securing the cold air inlet scoop to the factory air box.



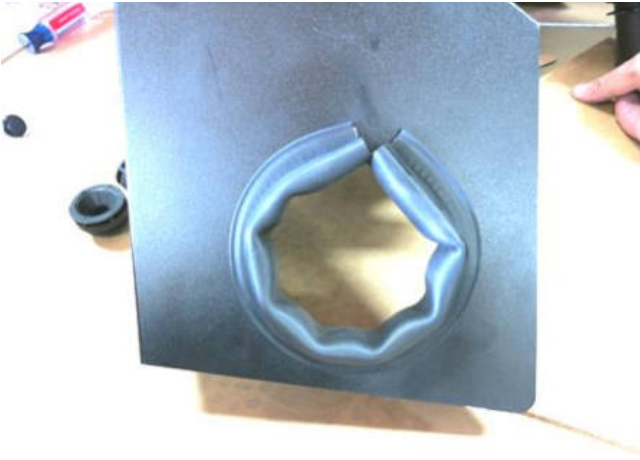
b. Unclip the resonator chamber from the cold air scoop while rotating the cold air scoop gently.



c. Rotate the cold air scoop until it will separate from the lower air box.



d. Remove the three rubber grommets from the factory air box and insert them into the AEM heat shield.



e. Install the 11" edge trim around the intake tube pass through hole on the AEM heat shield.



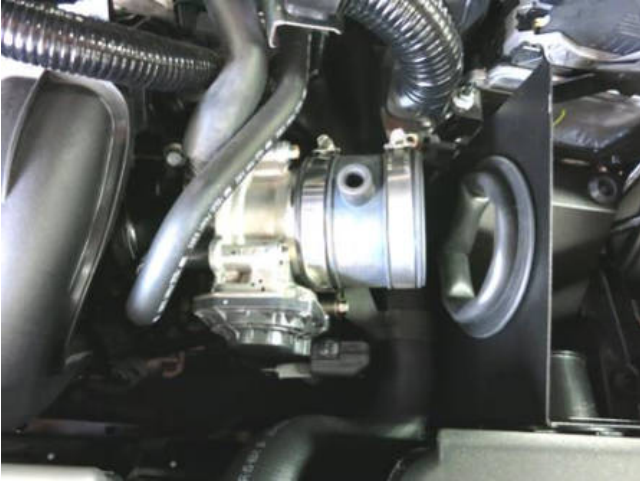
f. Insert the factory cold air scoop into the AEM heat shield and install assembly using factory grommets.



g. Remove MAF sensor from the factory air box using a small Philips head screw driver.



h. Install MAF sensor into the AEM intake tube using provided hardware.



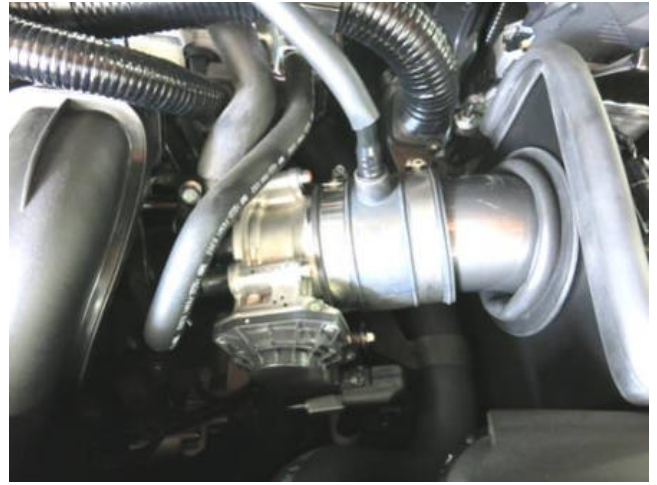
i. Install provided coupler with hose clamps provided onto throttle body with molded port facing upward. Do not tighten hose clamps at this point.



j. Loosely install the AEM air filter onto the intake tube.



k. Carefully install intake tube and install provided 16" edge trim around top edge of heat shield as shown.



l. Install the breather hose into the coupler.



m. Connect the MAF sensor harness to the sensor and tighten all of the hose clamps.



o. Factory air induction system.



p. Finished installation of AEM Intake System.

4. Reassemble Vehicle

- a. Position the inlet pipes for the best fitment. Be sure that the pipes or any other components do not contact any part of the vehicle.
- b. Check for proper hood clearance. Re-adjust pipes if necessary and re-tighten them.
- c. Inspect the engine bay for any loose tools and check that all fasteners that were moved or removed are properly tightened.
- d. Reconnect negative battery terminal and start engine. Let the vehicle idle for 3 minutes. Perform a final inspection before driving the vehicle.

5. Service and Maintenance

- a. AEM Induction Systems requires cleaning the intake system's air filter element every 100,000 miles. When used in dusty or off-road environments, our filters will require cleaning more often. We recommend that you visually inspect your filter once every 25,000 miles to determine if the screen is still visible. When the screen is no longer visible some place on the filter element, it is time to clean it. To clean, purchase our Synthetic air filter cleaner, part number 1-1000 and follow the easy instructions.
- b. Use window cleaner to clean your powder coated AEM[®] intake tube.

NOTE: DO NOT USE aluminum polish on powder coated AEM[®] intake tubes.

For technical inquiries
e-mail us at
sales@aemintakes.com
or
call us at
800.992.3000

AEM Air Intake System Warranty Policy

AEM® warrants that its intake systems will last for the life of your vehicle. AEM® will not honor this warranty due to mechanical damage (i.e. improper installation or fitment), damage from misuse, accidents or flying debris. AEM® will not warrant its powder coating if the finish has been cleaned with a hydrocarbon-based solvent. The powder coating should only be cleaned with a mild soap and water solution. Proof of purchase of both the vehicle and AEM® intake system is required for redemption of a warranty claim.

This warranty is limited to the repair or replacement of the AEM® part. In no event shall this warranty exceed the original purchase price of the AEM® part nor shall AEM® be responsible for special, incidental or consequential damages or cost incurred due to the failure of this product. Warranty claims to AEM® must be transportation prepaid and accompanied with dated proof of purchase. This warranty applies only to the original purchaser of product and is nontransferable. Improper use or installation, use for racing, accident, abuse, unauthorized repairs or alterations voids this warranty. AEM® disclaims any liability for consequential damages due to breach of any written or implied warranty on all products manufactured by AEM®. Warranty returns will only be accepted by AEM® when accompanied by a valid Return Merchandise Authorization (RMA) number. Credit for defective products will be issued pending inspection. Product must be received by AEM® within 30 days of the date RMA is issued.

If you have a warranty issue, please call (800) 992-3000 and our customer service department will assist you. A proof of purchase is required for all AEM® warranty claims.

