



Equipped with AEM® Dryflow™ Filter  
No Oil Required!

# INSTALLATION INSTRUCTIONS

## PART NUMBER

### 21-784C (Gun Metal Gray Finish)

---

2016

ACURA

ILX

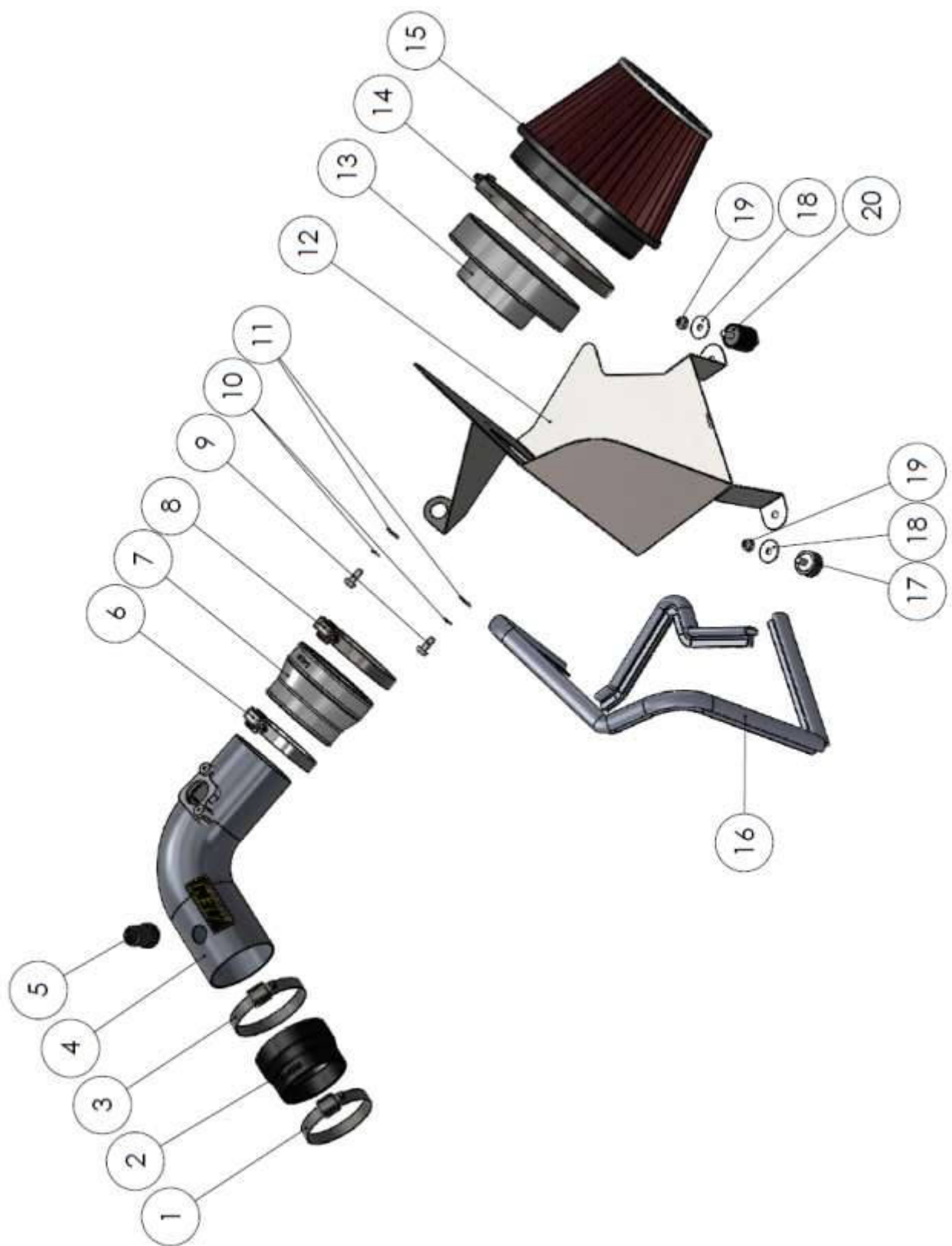
2.4L

C.A.R.B. E.O.# D-670-24

Some intake systems are not legal for sale or use on any pollution controlled motor vehicle in California or states adopting CA emission procedures. To know if a part number is legal in CA on your vehicle, visit [AEMIntakes.com](http://AEMIntakes.com).

# PARTS LIST

ITEM NO.	PART NUMBER	DESCRIPTION	QTY.
1	9440	HOSE CLAMP, 2.15-3.00"	1
2	084036	HOSE; 3" TO 2-3/4" ID X 2" L	1
3	9444	HOSE CLAMP, 2.31-3.25"	1
4	2-1562C	INTAKE TUBE; 3" OD X 10", 21-784	1
5	8-168	ADAPTER, PCV	1
6	9448	1/2" BNDHOSE CLAMP, 2.56"-3.50"	1
7	5-1046	HOSE, ADAPTER 3.00/3.50X2.5	1
8	9456	1/2" BNDHOSE CLAMP, 3.15"-4.00"	1
9	07730	BOLT; M6 X 1.00 X 16MM , BUTTON	2
10	1-3025	WASHER, M6 SPLIT LOCK ZINC	2
11	08275	WASHER; 1/4"ID X 5/8"OD - SAE	2
12	20-8570	HEAT SHIELD, ACURA ILX 2.4L 2016	1
13	21512-1	ADAPTER; UNIVERSAL, 6" FILTER 3.5"	1
14	94104	1/2" BNDHOSE CLAMP, 4.125-7.00"	1
15	21-209DK	AIR FILTER; 6" X 5" X 4.75" T DRYFLOW	1
16	102486	EDGE TRIM, 3/4" TOP LOC., 44"L	1
17	07027	STUD; M6-1.00 M/M, RUBBER MNTD	1
18	08160	WASHER; 1"D X 1/4 HOLE FENDER	2
19	444.460.04	NUT; M6 HEX SERRATED	2
20	1228599	MOUNT, RUBBER 1" X 6MM	1



Read and understand these instructions **BEFORE** attempting to install this product. Failure to follow installation instructions and not using the provided hardware may damage the intake tube, throttle body and engine. If you need any assistance please call 1-800-858-3333 to speak with a representative in our Customer Service Center before returning the product.

**Tools Needed:**

Screw driver

Socket Driver

5.5, 8 & 10 MM Sockets

6" Extension

Pliers

Knife

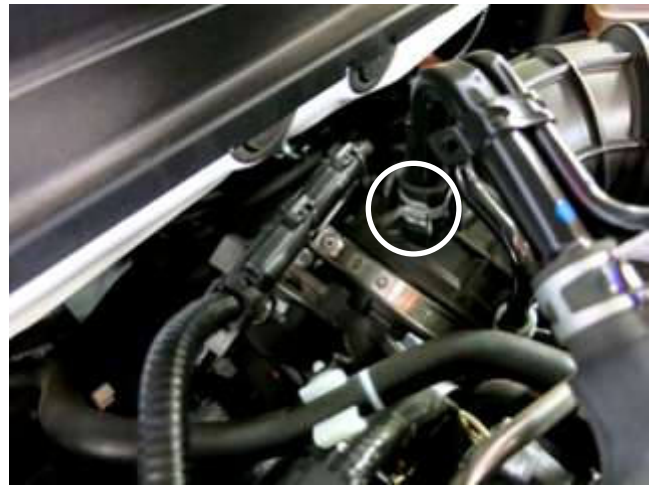
## 1. Preparing Vehicle

- a. Make sure vehicle is parked on level surface.
- b. Set the parking brake.
- c. If engine has run in the past two hours, let it cool down.
- d. Disconnect negative battery terminal.
- e. Do not discard stock components after removal of the factory system.
- f. Open the air intake kit package and make sure all parts are included.

## 2. Removal of stock system



a. Disconnect the Mass Air Flow (MAF) sensor connector from the sensor.



b. Squeeze the spring clamp and pull the metal tube out of the stock intake hose.



c. Loosen the hose clamp at the throttle body.



d. Loosen the (4) bolts that secure the upper air box to the lower air box.



e. On the upper air box, disconnect the push-in tab that secures the MAF sensor wire loom to the upper air box.



f. Lift the upper air box and stock intake hose out of the vehicle. Then, remove the stock air filter.



g. Loosen the (2) bolts that secure the lower air box to the vehicle.



h. Pull the rear of the lower air box off the push in grommet located underneath the brake fluid reservoir. Note: Soapy water can help disengaging the grommet from the stud.



i. Located in the front of the lower air box, remove the vent hose from the clips.



j. Disconnect the electrical connector and the clip securing the wire loom to the brake reservoir.



k. Remove the lower air box from the vehicle.



l. Release the pressure off the spring clamp and remove it from the stock intake hose. Note: This will be re-used in step 3b.



m. Remove the grommet from the lower air box. Note: Sometimes this can get stuck on the vehicle instead of the lower air box. This will be reused in step 3c.



n. Remove the screws securing the MAS to the upper air box lid. Note: The MAS and screws will be re-used in step 3a.



o. Remove the clip on the front of the lower air box by squeezing the tabs together. Note: This will be reused in step 3g.

### 3. Installation of AEM® intake system.

a. When installing the intake system, do not completely tighten the hose clamps or mounting hardware until instructed to do so.



a. Install the MAF sensor and screws into the AEM intake tube that were removed in step 2n.



b. Install the supplied PCV adapter and the spring clamp removed in step 2l. into the AEM intake tube.



c. Install the rubber grommet into the AEM heat shield that was removed in step 2m.



d. Install the supplied edge trim around the heat shield as shown and trim off excess if necessary.



e. Install the filter adapter into the heat shield and secure with the supplied hardware as shown in the exploded view.



f. Install the supplied coupler onto the filter adapter with the correct hose clamps. Tighten the hose clamp closest to the heat shield at this time.



g. Install the clip that was removed in step 2o. into the heat shield as shown.



h. Install the two rubber mounts into the vehicle. The shorter mount will go closest to the engine.



i. Install the heat shield into the vehicle and align the rear tab/rubber grommet with the stock mounting location. Note: Soapy water will help with installation.



j. Align the front two heat shield tabs with the rubber mounts and install the supplied washers and nuts. Tighten the nuts at this time.



k. Install the coupler onto the throttle body with the provided hose clamps. Tighten the hose clamp closest to the throttle body at this time.



l. Attach the transmission vent line that was removed in step 2i. to the clip on the heat shield.



m. Install the AEM air filter and hose clamp onto the heat shield at this time. Then, tighten the hose clamp.



n. Install the AEM intake tube into coupler at the heat shield, then rotate and install the AEM intake tube into the throttle body coupler. Note: Once installed, orient tube to achieve proper alignment. Tighten both hose clamps at this time.



o. Compress the spring clamp and slide the metal tube into the PCV grommet, then release the spring clamp.



p. Reconnect the brake reservoir sensor and MAF sensor connectors.



STOCK INTAKE INSTALLED



AEM INTAKE INSTALLED

#### 4. Reassemble Vehicle

- a. Position the inlet pipes for the best fitment. Be sure that the pipes or any other components do not contact any part of the vehicle.
- b. Check for proper hood clearance. Re-adjust pipes if necessary and re-tighten them.
- c. Inspect the engine bay for any loose tools and check that all fasteners that were moved or removed are properly tightened.
- d. Reconnect negative battery terminal and start engine. Let the vehicle idle for 3 minutes. Perform a final inspection before driving the vehicle.

#### 5. Service and Maintenance

- a. AEM Induction Systems requires cleaning the intake system's air filter element every 100,000 miles. When used in dusty or off-road environments, our filters will require cleaning more often. We recommend that you visually inspect your filter once every 25,000 miles to determine if the screen is still visible. When the screen is no longer visible some place on the filter element, it is time to clean it. To clean, purchase our Synthetic air filter cleaner, part number 1-1000 and follow the easy instructions.
- b. Use window cleaner to clean your powder coated AEM<sup>®</sup> intake tube.

**NOTE: DO NOT USE aluminum polish on powder coated AEM<sup>®</sup> intake tubes.**

For technical inquiries  
e-mail us at  
[sales@aemintakes.com](mailto:sales@aemintakes.com)  
or  
call us at  
800.992.3000

## **AEM Air Intake System Warranty Policy**

AEM® warrants that its intake systems will last for the life of your vehicle. AEM® will not honor this warranty due to mechanical damage (i.e. improper installation or fitment), damage from misuse, accidents or flying debris. AEM® will not warrant its powder coating if the finish has been cleaned with a hydrocarbon-based solvent. The powder coating should only be cleaned with a mild soap and water solution. Proof of purchase of both the vehicle and AEM® intake system is required for redemption of a warranty claim.

This warranty is limited to the repair or replacement of the AEM® part. In no event shall this warranty exceed the original purchase price of the AEM® part nor shall AEM® be responsible for special, incidental or consequential damages or cost incurred due to the failure of this product. Warranty claims to AEM® must be transportation prepaid and accompanied with dated proof of purchase. This warranty applies only to the original purchaser of product and is nontransferable. Improper use or installation, use for racing, accident, abuse, unauthorized repairs or alterations voids this warranty. AEM® disclaims any liability for consequential damages due to breach of any written or implied warranty on all products manufactured by AEM®. Warranty returns will only be accepted by AEM® when accompanied by a valid Return Merchandise Authorization (RMA) number. Credit for defective products will be issued pending inspection. Product must be received by AEM® within 30 days of the date RMA is issued.

If you have a warranty issue, please call (800) 992-3000 and our customer service department will assist you. A proof of purchase is required for all AEM® warranty claims.

**Some intake systems are not legal for sale or use on any pollution controlled motor vehicle in California or states adopting CA emission procedures. To know if a part number is legal in CA on your vehicle, visit [AEMIntakes.com](http://AEMIntakes.com).**