



Equipped with AEM® Dryflow™ Filter
No Oil Required!

INSTALLATION INSTRUCTIONS
PART NUMBER
21-788C (Gun Metal Gray Finish)

2012-19

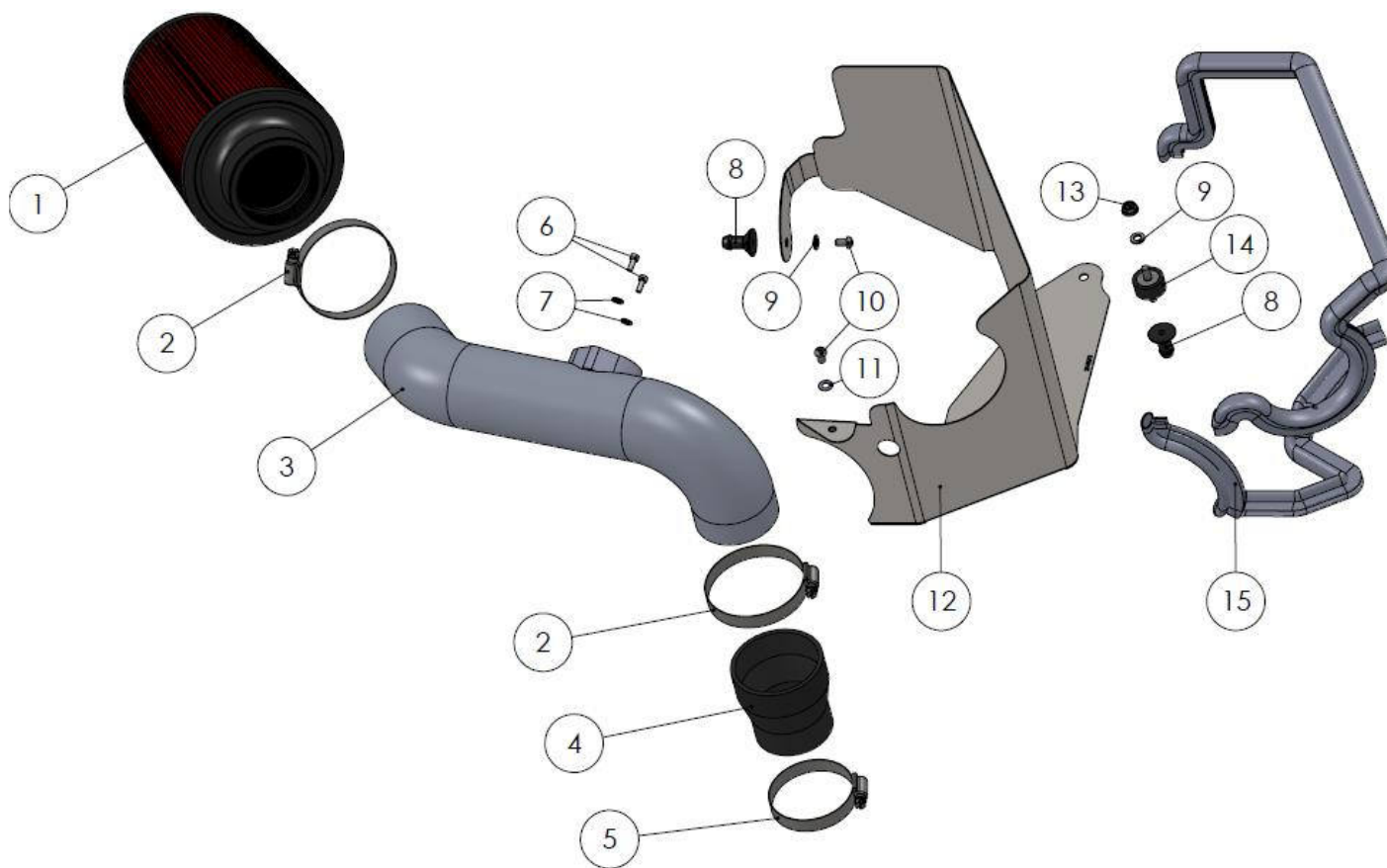
Chevrolet

Sonic

1.4L TURBO

PARTSLIST

ITEM NO.	PART NUMBER	DESCRIPTION	QTY.
1	21-2157DK	AIR FILTER 2-3/4" FLG, 5-1/2"B, 4-3/4T DRYFLOW	1
2	9444	HOSE CLAMP, 2.31-3.25"	2
3	2-1566C	INTAKE TUBE; 2.75"OD X 16", 21-788, GRAY	1
4	5-227	HOSE, ADAPTER 2.25/2.75"X3" BLK	1
5	9436	1/2' BNDHOSE CLAMP,1.81"-2.75"	1
6	1-2105	BOLT; SOCKET M4-0.7 X 10MM	2
7	08278	WASHER; 4MM FLAT	2
8	8-186-1	MOUNT, PLASTIC AIRBOX, NYLON	2
9	1-3018	WASHER, M6 x 12MM OD ZINC	2
10	1-112	BOLT; BUTTON HEAD M6-1.0 X 10MM	2
11	1-3001	WASHER, #12 NYLON 6/6	1
12	20-8572	HEAT SHIELD, CHEVROLET SONIC 1.4L 2015 TB/PC	1
13	444.460.04	NUT; M6 HEX SERRATED	1
14	07027	STUD; M6-1.00 M/M, RUBBER MNTD	1
15	102470	EDGE TRIM; 3/4 BULB, TOP LOC, 57"L	1



Read and understand these instructions **BEFORE** attempting to install this product. Failure to follow installation instructions and not using the provided hardware may damage the intake tube, throttle body and engine.

Tools Needed:

Screw driver
10MM socket
Socket Driver
Side Cutters
4MM Hex Key

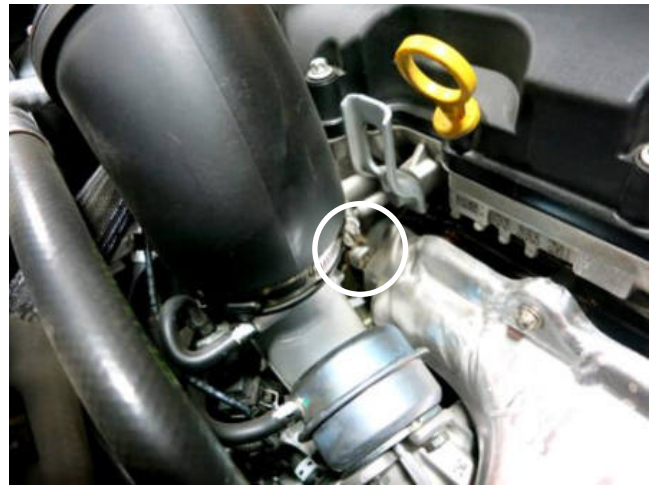
1. Preparing Vehicle

- a. Make sure vehicle is parked on level surface.
- b. Set the parking brake.
- c. If engine has run in the past two hours, let it cool down.
- d. Disconnect negative battery terminal.
- e. Do not discard stock components after removal of the factory system.
- f. Open the air intake kit package and make sure all parts are included.

2. Removal of stock system



a. Release the red tab on the mass air sensor connector and disconnect the connector from the sensor.



b. Loosen the hose clamp at the turbo compressor inlet.



c. Remove the stock air intake. There are three push-in mounts securing the lower air box to the vehicle. Note: Do not discard any of your stock equipment.



d. Remove the rubber grommet from the vehicle. This will not be reused.



e. Remove the rubber grommet from the inner fender of the vehicle. This will be reused in step 3a.



f. Remove the two screws securing the mass air sensor to the stock upper air box. The screws will not be re-used, however the mass air sensor will be reused in step 3g.

3. Installation of AEM® intake system.

When installing the intake system, do not completely tighten the hose clamps or mounting hardware until instructed to do so.



a. Take the rubber grommet that was removed in step 2e. and install it into the same location the rubber grommet in step 2d. was removed.



b. Install the edge trim onto the AEM heat shield as shown, trim to fit if desired.



c. Install the provided hardware onto the AEM heat shield as shown. See the diagram on page 2 for parts and part number references.



d. Install the completed AEM heat shield into the vehicle aligning the mount on the inner fender and rear rubber grommet.



e. Make sure the AEM heat shield is under the lip of the core support, and install the provided bolt/nylon washer securing the AEM heat shield to the vehicle. **NOTE: On vehicles equipped with projector head lights it will be necessary to install the bolt from the bottom up.**



f. Install the coupler and provided hose clamps on to the turbo compressor inlet. Tighten the hose clamp closest to the compressor at this time.



g. Install the mass air flow sensor into the AEM intake tube that was removed in step 2f. and secure with the provided hardware.



h. Install the AEM filter onto the AEM intake tube and secure with the provided hose clamp.



i. Install the AEM intake tube into the vehicle aligning the tube with the coupler. Tighten the hose clamp (circled above) at this time.



j. Reconnect the mass air sensor connector onto the mass air sensor. Engage the red locking tab.



STOCK INTAKE INSTALLED



AEM INTAKE INSTALLED

4. Reassemble Vehicle

- a. Position the inlet pipes for the best fitment. Be sure that the pipes or any other components do not contact any part of the vehicle.
- b. Check for proper hood clearance. Re-adjust pipes if necessary and re-tighten them.
- c. Inspect the engine bay for any loose tools and check that all fasteners that were moved or removed are properly tightened.
- d. Reconnect negative battery terminal and start engine. Let the vehicle idle for 3 minutes. Perform a final inspection before driving the vehicle.

5. Service and Maintenance

- a. AEM Induction Systems requires cleaning the intake system’s air filter element every 100,000 miles. When used in dusty or off-road environments, our filters will require cleaning more often. We recommend that you visually inspect your filter once every 25,000 miles to determine if the screen is still visible. When the screen is no longer visible some place on the filter element, it is time to clean it. To clean, purchase our Synthetic air filter cleaner, part number 1-1000 and follow the easy instructions.
- b. Use window cleaner to clean your powder coated AEM® intake tube.

NOTE: DO NOT USE aluminum polish on powder coated AEM® intake tubes.

For technical inquiries
e-mail us at
sales@aemintakes.com
or
call us at
800.992.3000

AEM Air Intake System Warranty Policy

AEM® warrants that its intake systems will last for the life of your vehicle. AEM® will not honor this warranty due to mechanical damage (i.e. improper installation or fitment), damage from misuse, accidents or flying debris. AEM® will not warrant its powder coating if the finish has been cleaned with a hydrocarbon-based solvent. The powder coating should only be cleaned with a mild soap and water solution. Proof of purchase of both the vehicle and AEM® intake system is required for redemption of a warranty claim.

This warranty is limited to the repair or replacement of the AEM® part. In no event shall this warranty exceed the original purchase price of the AEM® part nor shall AEM® be responsible for special, incidental or consequential damages or cost incurred due to the failure of this product. Warranty claims to AEM® must be transportation prepaid and accompanied with dated proof of purchase. This warranty applies only to the original purchaser of product and is nontransferable. Improper use or installation, use for racing, accident, abuse, unauthorized repairs or alterations voids this warranty. AEM® disclaims any liability for consequential damages due to breach of any written or implied warranty on all products manufactured by AEM®. Warranty returns will only be accepted by AEM® when accompanied by a valid Return Merchandise Authorization (RMA) number. Credit for defective products will be issued pending inspection. Product must be received by AEM® within 30 days of the date RMA is issued.

If you have a warranty issue, please call (800) 992-3000 and our customer service department will assist you. A proof of purchase is required for all AEM® warranty claims.