



Equipped with AEM® Dryflow™ Filter
No Oil Required!

INSTALLATION INSTRUCTIONS

PART NUMBER: 21-8401

2003	TOYOTA Tundra	V8-4.7L	
2000-2002	TOYOTA Tundra	V8-4.7L	C.A.R.B. E.O. # D-670-2
2001-2003	TOYOTA Sequoia	V8-4.7L	C.A.R.B. E.O. # D-670-2

**LEGAL IN CALIFORNIA ONLY FOR RACING VEHICLES
WHICH MAY NEVER BE USED, REGISTERED
OR LICENSED FOR USE UPON A HIGHWAY.**

See aemintakes.com for CARB status on each part for a specific vehicle

PARTS LIST

Description	Qty.	Part Number
Air Filter Assy. 3.00 X 9" Dry Ele.	1	21-2039DK
Heat Shield	1	20-8401
Inlet Pipe	1	2-84012
Elbow, 3.25/3.00 90 Deg.	1	5-491
Hose; 1/2"ID X 12"L	1	5-5012
Hose; 3/8"ID X 19"L	1	5-1019
Hose; 5/32"ID X 15"L	1	5-3015
Edge Trim, 12"	1	8-4012
Mount, Rubber 1" X 6mm	1	1228599
Grommet, 1/8"	1	784631
Grommet, 1/4"	1	784637
Connector, Plastic 1/8" Straight	1	8-103
Rubber Edge Trim 12"	1	102466
Edge Trim, 2"	1	8-4002
Connector, Plastic 1/4" Straight	1	8-124
Washer, 6mm Soft Mount	1	08160
Nut, M6 Hex Serrated	1	444.460.04
Hose Clamp, 3/4"	2	4093-5
1/2" Bnd. Hose Clamp, 2.56"-3.50"	1	9448
1/2" Bnd. Hose Clamp, 2.90"-3.75"	2	9452
Hose Clamp, 1"	2	08407

Read and understand these instructions **BEFORE** attempting to install this product. Failure to follow installation instructions and not using the provided hardware may damage the intake tube, throttle body and engine.

1. Preparing Vehicle

- a. Make sure vehicle is parked on level surface.
- b. Set parking brake.
- c. If engine has run in the past two hours, let it cool down.
- d. Disconnect negative battery terminal.
- e. Do not discard stock components after removal of the factory system.

2. Removal of stock system



a. Stock air box system installed in vehicle.



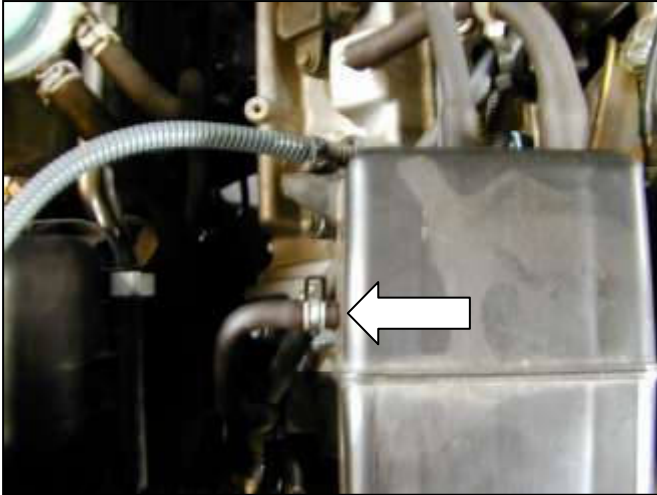
b. Remove the two nuts retaining the stock engine cover and remove.



c. Remove the bolt retaining the stock AC line.



d. Remove the two screws retaining the MAF sensor and set them aside in a safe area. They will be installed with the AEM® intake system.



e. Remove the hose from the resonator chamber on the stock air box system.



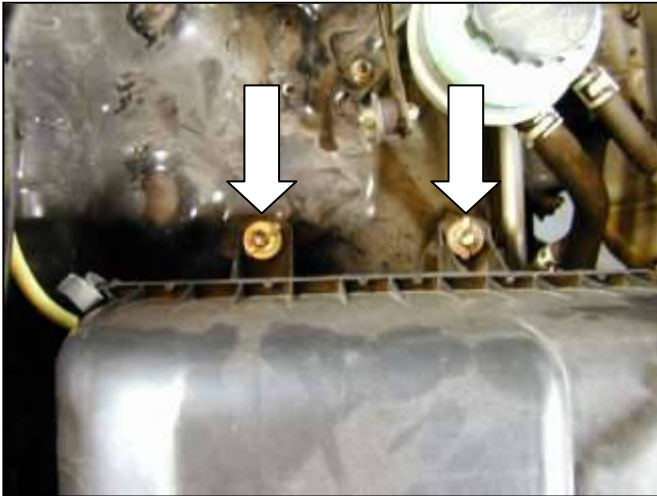
f. Remove the three hoses from the resonator chamber on the stock system. Some models have only two hoses and one vacuum cap to remove.



g. Loosen the hose clamp retaining the stock intake piping.



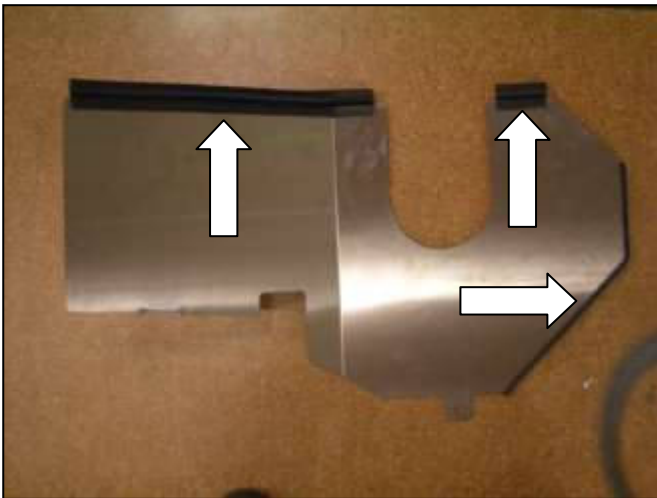
h. Remove the bolt retaining the stock air box.



i. Remove the two bolts retaining the stock air box system. Remove the air box assembly from vehicle.

3. Installation of AEM® intake system.

a. When installing the intake system, do not completely tighten the hose clamps or mounting hardware until instructed to do so.



b. Install the rubber edge gasket and edge trim on the heat shield as shown above.



c. Install the heat shield mounting tab and use the stock nut to secure in place.



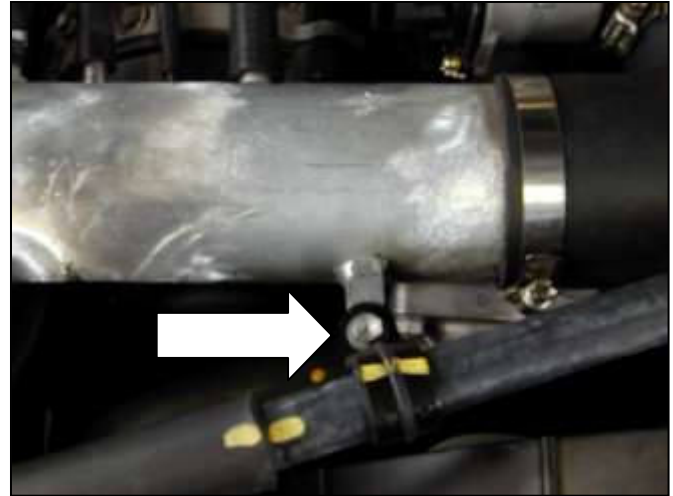
d. Remove the bolt securing the stock mounting tab. Insert the heat shield in place and use the stock bolt to secure in place.



e. Relocate the stock wiring harness to the lower portion of the heat shield making sure it is free and clear.



f. Install the rubber coupler on the throttle body and use the supplied #52 hose clamp to secure in place. Install the intake pipe in the other end of the rubber connector and secure in place using the supplied #48 hose clamp.



g. Use the stock bolt to secure the A/C line in place on the mounting block on the AEM® intake pipe.



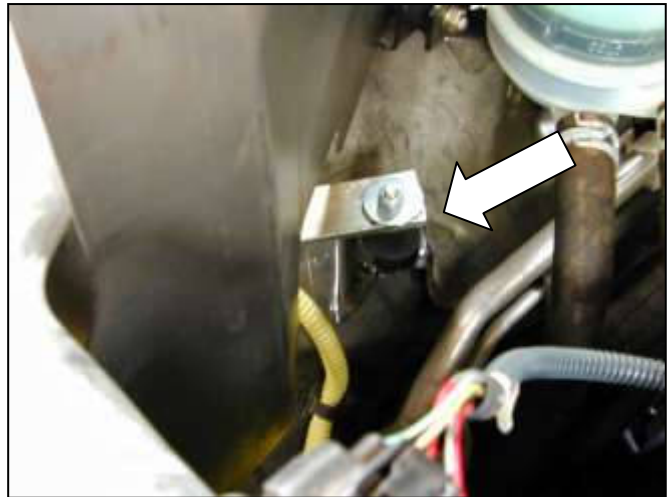
h. Install the 5/32" new hose on the fuel pressure regulator. Install the new 3/8" hose on the end of the exposed tube from the removal of the stock intake system if applicable. Use the 3/4 hose clamp to secure in place.



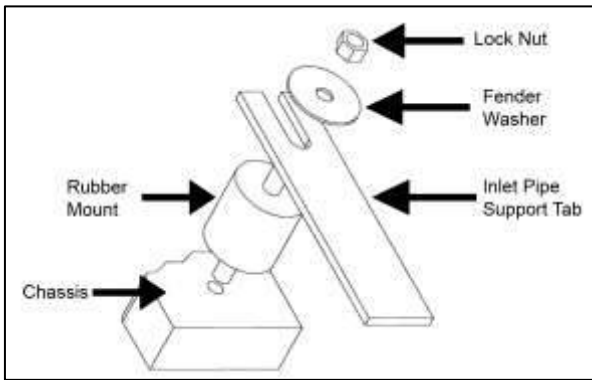
i. Install the new 1/2 hose and secure in place using one of the 1" hose clamps.



j. Install the three new hoses and secure in place using the supplied hose clamps. Install the stock hose removed in step 2e. Install the vacuum cap if applicable.



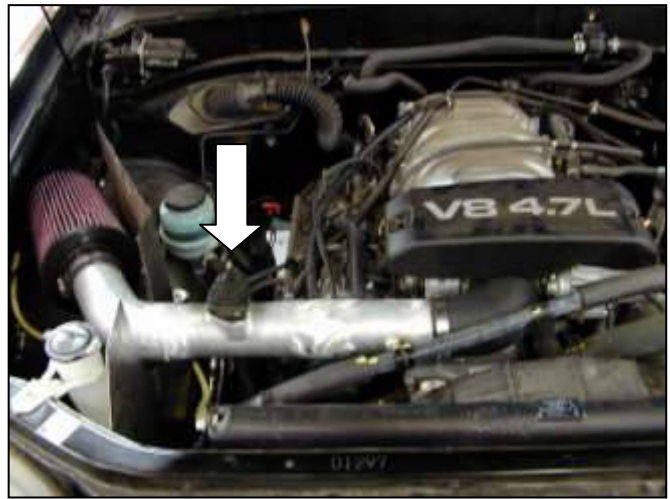
k. Install the rubber mount in the mounting hole exposed from the removal of the stock air box system. Install the supplied rubber mount in place. Using the fender washer and serrated nut secure the inlet pipe bracket in place.



Proper installation of the rubber mount assembly.



l. Install the air filter onto the end of the intake pipe and secure in place using the supplied hose clamp.



m. Install the MAF sensor in the inlet pipe using the stock mounting screws.

4. Reassemble Vehicle

- a. Position the inlet pipes for the best fitment. Be sure that the pipes or any other components do not contact any part of the vehicle. Tighten the rubber mount, all bolts, and hose clamps.
- b. Check for proper hood clearance. Re-adjust pipes if necessary and re-tighten them.
- c. Inspect the engine bay for any loose tools and check that all fasteners that were moved or removed are properly tightened.
- d. Reconnect negative battery terminals and start engine. Let the vehicle idle for 3 minutes. Perform a final inspection before driving the vehicle.

5. CARB Sticker Placement

- a. The C.A.R.B. exemption sticker, (attached), must be visible under the hood so that an emissions inspector can see it when the vehicle is required to be tested for emissions. California requires testing every two years, other states may vary.

6. Service and Maintenance

- a. It is recommended that you service your AEM® Dryflow™ filter every 20,000 miles for optimum performance.

Use AEM Dryflow cleaning kit part # 21-110.

- b. Use aluminum polish to clean your polished AEM[®] intake tube.
- c. Use window cleaner to clean your powder coated AEM[®] intake tube. **(NOTE: DO NOT USE aluminum polish on powder coated AEM intake tubes).**

For technical inquiries
e-mail us at
sales@aemintakes.com
or
call us at
800.992.3000

AEM Air Intake System Warranty Policy

AEM[®] warrants that its intake systems will last for the life of your vehicle. AEM will not honor this warranty due to mechanical damage (i.e. improper installation or fitment), damage from misuse, accidents or flying debris. AEM will not warrant its powder coating if the finish has been cleaned with a hydrocarbon-based solvent. The powder coating should only be cleaned with a mild soap and water solution. Proof of purchase of both the vehicle and AEM intake system is required for redemption of a warranty claim.

This warranty is limited to the repair or replacement of the AEM part. In no event shall this warranty exceed the original purchase price of the AEM part nor shall AEM be responsible for special, incidental or consequential damages or cost incurred due to the failure of this product. Warranty claims to AEM must be transportation prepaid and accompanied with dated proof of purchase. This warranty applies only to the original purchaser of product and is nontransferable. Improper use or installation, use for racing, accident, abuse, unauthorized repairs or alterations voids this warranty. AEM disclaims any liability for consequential damages due to breach of any written or implied warranty on all products manufactured by AEM. Warranty returns will only be accepted by AEM when accompanied by a valid Return Merchandise Authorization (RMA) number. Credit for defective products will be issued pending inspection. Product must be received by AEM within 30 days of the date RMA is issued.

If you have a warranty issue, please call (800) 992-3000 and our customer service department will assist you. A proof of purchase is required for all AEM warranty claims.

