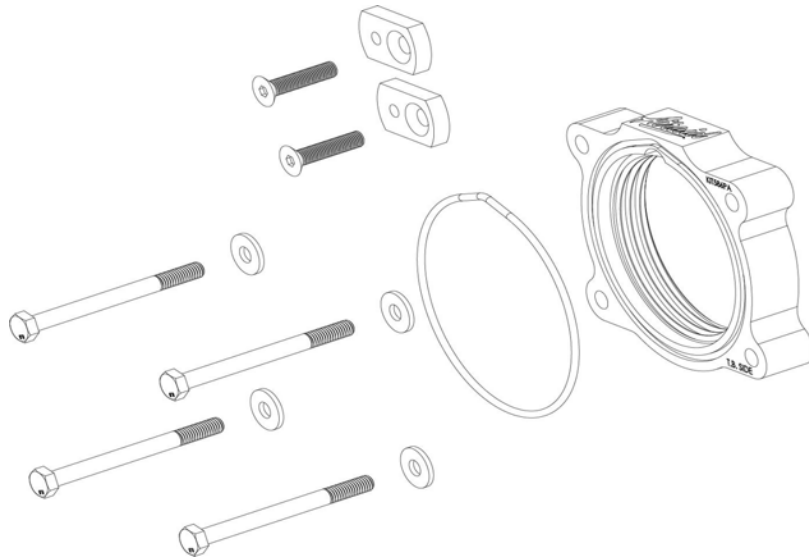




**# 200-586 INSTALLATION INSTRUCTIONS**  
**02-09 Chevrolet TrailBlazer/GMC Envoy 4.2L**  
**2003-08 Isuzu Ascender 4.2L**  
**2005-08 Saab 9-7X 4.2L**

Thank you for purchasing the Airaid Throttle Body Spacer. Please read the instruction manual carefully before proceeding with the installation. Your Airaid Throttle Body Spacer was carefully inspected and packaged. Check that no parts are missing, or were damaged during shipping. If you need any assistance please call 1-800-858-3333 to speak with a representative in our Customer Service Center before returning the product.

*Thank you for selecting AIRAID.*



**THROTTLE BODY SPACERS FOR VEHICLES LISTED ARE 50 STATE LEGAL. SEE AIRAID.COM FOR CARB STATUS ON EACH PART FOR A SPECIFIC VEHICLE.**

<b>Parts List</b>		
AIR-KIT586PA	Aluminum Plate	(1)
AIR-KIT586H	Hardware	
	"O" Ring	(1)
	6mm x 60mm Bolts	(4)
	6mm Flat Washers	(4)
	Extension Plates	(2)
	6mm x 25mm Flat Head Screws	(2)

Also available, the Airaid Intake System, p/n 200-126-1 for the 2002-05 Chevrolet/GMC models. Call for details!

<b>Tools List</b>
10mm Socket
4mm Socket (stud removal)
5/32" Allen Wrench

## ***Installation Instructions. Read Me!***

1. **DISCONNECT NEGATIVE (-) BATTERY CABLE.**
2. Remove throttle body air intake system.
3. Remove (4) nuts & studs from the throttle body and manifold. (Ref. "C")
4. Install spacer using (4) 6mm x 60mm bolts and (4) 6mm flat washers. (Ref. "C")
  - \* **Please Note: The engraved side of spacer faces the throttle body**
5. Install (2) extension plates using (2) 6mm flat head screws. (Ref. "D")
6. Inspect & Test throttle linkage for full open & closed travel before driving. Some cruise or kickdown cables may require adjustment. Please refer to your vehicles service manual for proper adjustment.
7. Reinstall the air intake system using **Step 2** as an example.
8. Reconnect battery cable. Enjoy!

***The sound of power...The "whistle" means its working!***

Ref. "D"- (2) Extension Plates  
(2) 6mm x 25mm Flat Head Screws



Ref. "B"- Throttle Body

Ref. "C"- (4) 6mm x 60mm Bolts  
(4) 6mm Flat Washers

Ref. "A"- (1) Power Plate  
(1) "O"-ring

AIR-I20586C  
Rev. 9/15/20