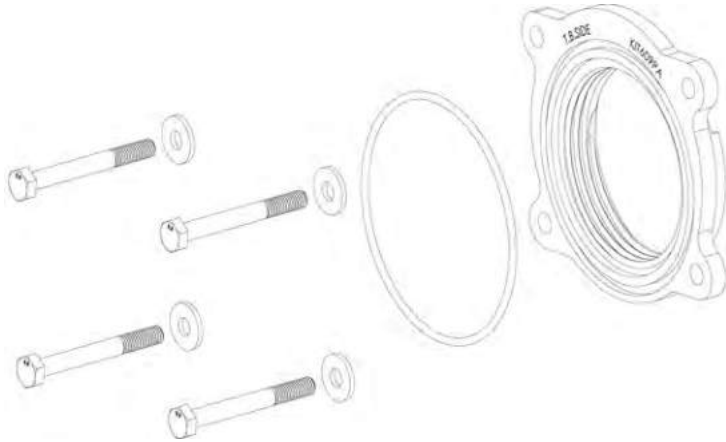




## Installation Instructions Part Number 250-609

2016–20 Chevrolet Camaro  
3.6L V-6



### Parts List

AIR-KIT609PA	Aluminum Plate	(1)
AIR-KIT609H	Hardware	
	6mm x 50mm Bolt	(4)
	6mm Flat Washer	(4)
	O Ring	(1)

### Tools Required For Installation

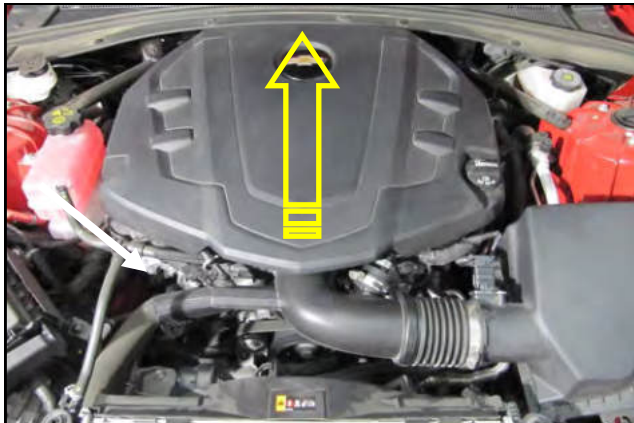
5/16", 10mm Socket  
Ratchet and Extension

**NOT LEGAL FOR SALE OR USE ON ANY POLLUTION CONTROLLED MOTOR VEHICLE IN CALIFORNIA OR STATES ADOPTING CALIFORNIA EMISSION PROCEDURES.**

See AIRAID.COM for CARB status on each part for a specific vehicle.

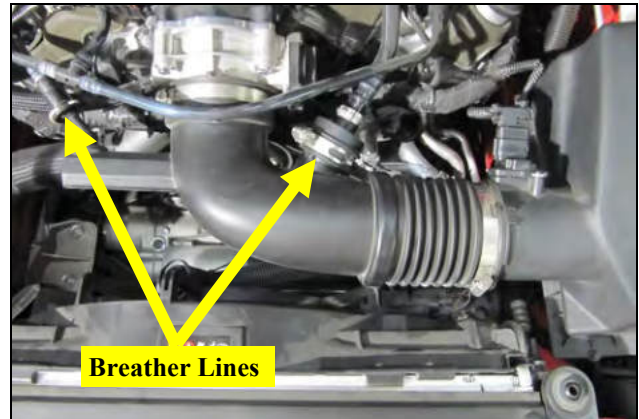
Thank you for purchasing the Airaid Throttle Body Spacer. Please read the instruction manual carefully before proceeding with the installation. Your Airaid Throttle Body Spacer was carefully inspected and packaged. Check that no parts are missing, or were damaged during shipping. If you need any assistance please call 1-800-858-3333 to speak with a representative in our Customer Service Center before returning the product.

*Thank you for selecting AIRAID.*



#### 1. Disconnect the negative battery cable!

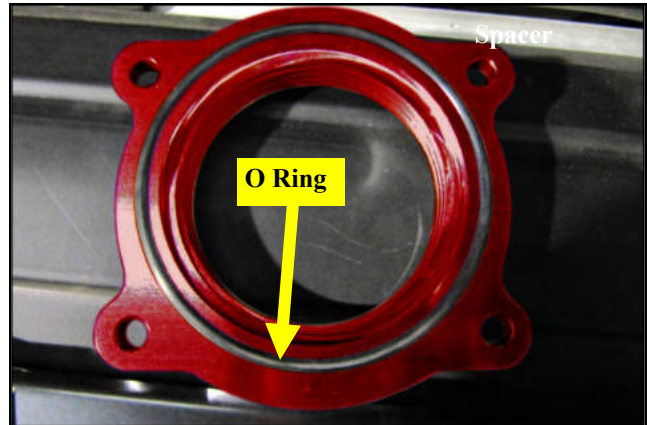
Remove the oil fill cap and set it aside.  
Remove the engine cover and set it aside.  
Reinstall the oil fill cap after the cover has been removed to prevent any foreign material from entering the crankcase.



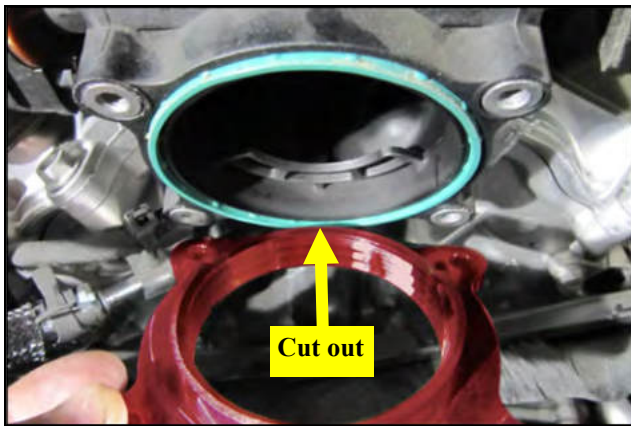
2. Disconnect the breather hose lines from the intake tube. Loosen the two hose clamps that secure the intake tube to the throttlebody, and remove the air intake tube.



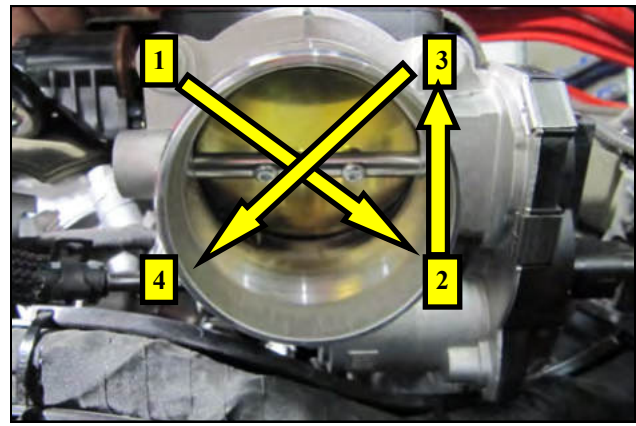
3. Remove the four bolts that secure the throttlebody to the intake manifold.



4. Gently press the O Ring into the groove on the throttle body (Flat) side of the spacer. Hint: Soapy water makes for a good O Ring lubricant if needed.



5. Install the Spacer into the intake manifold as shown with the cut out in the 6 O Clock position. When properly installed, the Spacer sleeve will be inside the manifold and the flange will be flush.



6. Reinstall the throttlebody on top of the Airaid Spacer ( O Ring side facing out) and use the four bolts and washers that are supplied with the kit. Tighten the bolts evenly to the vehicle manufacturers specifications, in a "X" pattern. Manually cycle the throttle plate by hand to confirm you have the full range of motion.



7. Reinstall the intake tube, tighten the two hose clamps, and reconnect the crankcase breather tubes. Reinstall the beauty cover, and oil cap in the reverse order in which they were removed.

AIR-I25609F  
REV.12.10.20

***The sound of power...The "whistle" means its working!***