



350-532 INSTALLATION INSTRUCTIONS

2005-18 Dodge Challenger/Charger, Magnum & Chrysler 300 5.7L V8

2005-09 SRT-8 6.1L V8

2006-09 Jeep Grand Cherokee SRT-8 6.1L V8

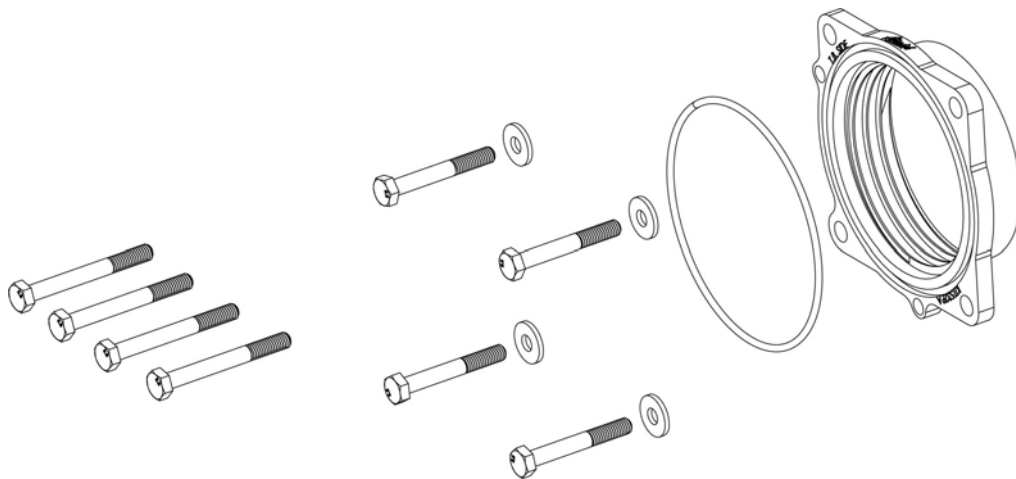
2011-18 Dodge Challenger/Charger & Chrysler 300 SRT-8 6.4L V8

For 2010 6.1L SRT-8 motors use Pn 350-635

THROTTLE BODY SPACERS FOR VEHICLES LISTED ARE 50 STATE LEGAL. SEE AIRAID.COM FOR CARB STATUS ON EACH PART FOR A SPECIFIC VEHICLE.

Thank you for purchasing the Airaid Throttle Body Spacer. Please read the instruction manual carefully before proceeding with the installation. Your Airaid Throttle Body Spacer was carefully inspected and packaged. Check that no parts are missing, or were damaged during shipping. If you need any assistance please call 1-800-858-3333 to speak with a representative in our Customer Service Center before returning the product.

Thank you for selecting AIRAID.



Parts List

AIR-KIT532PA Aluminum Plate	(1)
AIR-KIT532H Hardware	(1)
"O" Ring	(1)
6mm x 60mm Bolts	(4)
6mm Flat Washers	(4)
51mm Screws (Black)	(4)

Also available for your Dodge Magnum, Challenger, Chrysler 300C, Dodge Charger, or Jeep Cherokee, the Airaid Intake System. Call for Details!

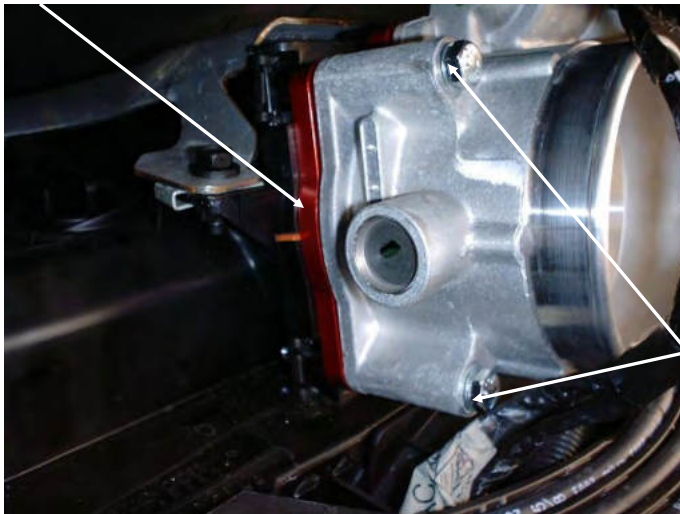
Tool List

8mm Socket
10mm Socket
Ratchet

Installation Instructions. Read Me!

1. **DISCONNECT NEGATIVE (-) BATTERY CABLE.**
2. Remove air intake assembly.
3. Remove the original (4) bolts from the throttle body.
4. **For vehicles with Aluminum Manifolds:** Install power plate using supplied (4) 6mm x 60mm bolts and (4) 6mm flat washers.
5. **For vehicles with composite manifolds:** Use (4) 51mm Black Screws (Ref. "B") (The 51mm black screws are not compatible with metal threaded intake manifolds.)
6. Inspect & Test throttle linkage for full Open & Closed travel before driving. Some cruise or kickdown cables may require adjustment, Please refer to your vehicles service manual.
7. Reinstall the throttle body air intake assembly using **Step 2** as an example.
8. Reconnect negative battery cable. Enjoy!

Ref. "A"- (1) Power Plate
(1) "O"-Ring



Ref. "B"- Aluminum manifolds use
(4) 6mm x 60mm Bolts
(4) 6mm Washers
Composite manifolds Models Use:
(4) 51mm Black Screws

AIR-I35532D
Rev. 07.31.20