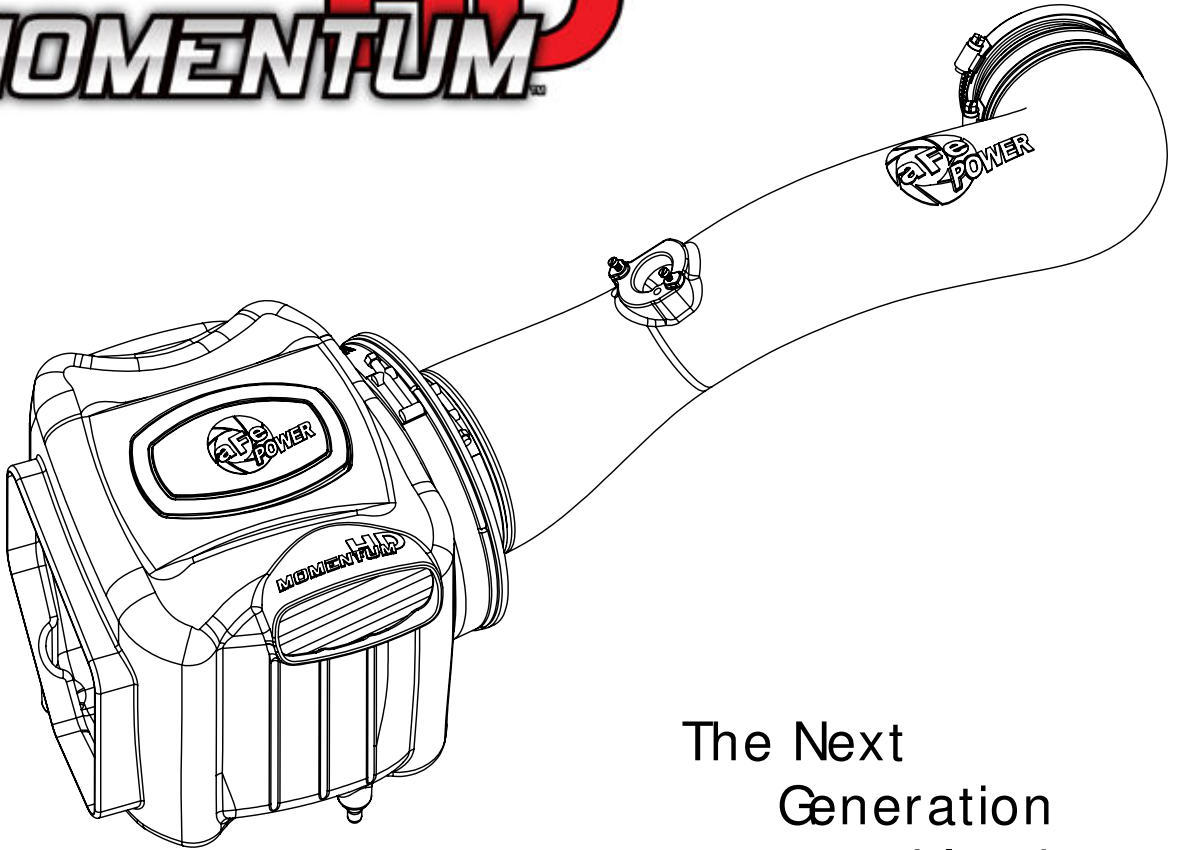


MOMENTUM **HD**



The Next
Generation
of Intakes

advanced FLOW engineering

Instruction Manual P/N: 51-74103 / 54-74103

Make: **Chevrolet/GMC** Model: **Silverado/Sierra** Year: **2009-2013** Engine: **V8-4.8L / 5.3L / 6.2L**



- Please read the entire instruction manual before proceeding.
- Ensure all components listed are present.
- If you are missing any of the components, call technical support at 951-493-7100 or e-mail tech@afepower.com.
- Ensure you have all necessary tools before proceeding.
- Do not attempt to work on your vehicle when the engine is hot.
- Disconnect both the negative battery terminal before proceeding.

Retain factory parts for future use.

Label	Qty.	Description	Part Number
A1	1	Pro 5R (Blue Media)	24-91072
A2	1	Pro DRY S (Grey Media)	21-91072
B	1	Housing	05-82302B2
C	1	Tube	05-74103B1
D	1	Plug, Urethane	05-01202
E	1	Seal Trim (7/16")	05-00072
F	1	Clamp, 060 (3-5/16")	03-50002
G	1	Clamp, T-bolt (8-5/16")	03-50267
H	1	Clamp, 072 (3" - 5")	03-50010
I	1	Coupling, Reducer (4.15" x 3.75")	05-00020
J	2	Screw, M4	03-50491
K	1	Hose, Fuel (1/2")	03-00027
L	2	Clamp, Mini 006	03-50025

Installation will require the following tools:

8mm, 10mm socket or nut driver, Pliers, flat screw driver, Torx T15 & T20 Driver.

Warranty Information available at <https://afepower.com/contact#warranty>

Note: Not legal for use in California. The use of this device in any on-road or off-road vehicles registered with the California Dept of Motor Vehicles (DMV) is strictly prohibited.

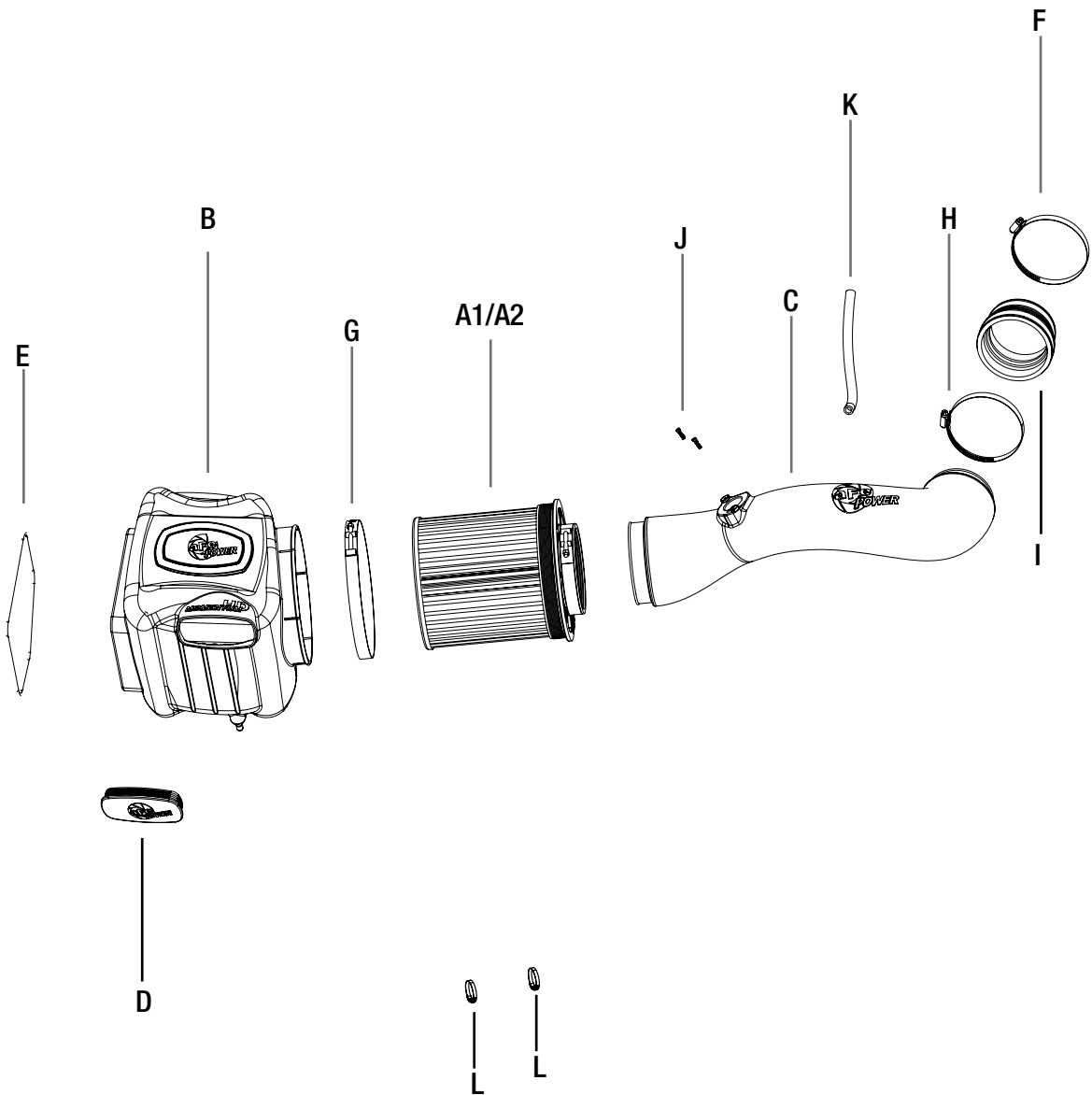




Figure A

Refer to Figure A for steps 1-3

- Step 1: Disconnect the MAF sensor plug from stock intake tube (1) .
- Step 2: Loosen clamp from OE airbox housing and OE Intake tube (2) .
- Step 3: Loosen clamp from throttle body (3) .

INSTALL



Figure B

Refer to Figure B for step 4

Step 4: Disconnect OE intake tube from the radiator hose clip.



Figure C

Refer to Figure C for steps 5-6

Step 5: Remove the OE crank case breather plug from the resonator chamber (as shown) and remove it from where it attaches to the engine.

Step 6: Pull the complete factory air intake system (tube and housing) out of the vehicle.



Figure D

Refer to Figure D for steps 7-8

Step 7: Slide the afe filter into the momentum HD air box. Install furnished T-bolt clamps. Do not tighten at this time.

Step 8: If you want to completely seal the air box, use the furnished plug (4) to close the auxiliary air inlet off.

INSTALL



Refer to Figure E for steps 9-10

Step 9: Install the trim seal (5) on the edge of the Momentum HD air box.

Step 10: Transfer the retaining plug (6) from the bottom of the factory air box to the Momentum HD air box.



Figure F

Refer to Figure F for step 11

Step 11: Install the aFe air box into the vehicle by firmly pushing it into the factory mounting grommets.

**Figure G****Refer to Figure G for steps 12-14**

- Step 12: Remove the mass air flow sensor from the factory air box using the T15 torx bit or driver.
- Step 13: Install the mass air flow sensor on the aFe intake tube. Secure it with the supplied M4 screws.
- Step 14: Install the furnished coupling and clamps on small end of the aFe intake tube. Do not tighten clamps at this time.



Figure H

Refer to Figure H for steps 15-16

Step 15: Install the intake tube into the vehicle. Slide the tube in the filter, then the coupling over the throttle body.

Step 16: Align the tube correctly then tighten all clamps.

**Figure I****Refer to Figure I for steps 17-19**

Step 17: Place the crankcase breather hose (7) with the provided hose and mini clamp, then connect the valve cover to the aFe tube.

Step 18: Reconnect the mass air flow sensor (8).

Step 19: Make sure all clamps and connection are secured. Your installation is now completed.

NOTE: Retighten all connections after approximately 100-200 miles.

Page left blank intentionally

Page left blank intentionally

Page left blank intentionally

advanced FLOW engineering, inc.