

# **GT** **MOMENTUM**

***advanced FLOW engineering***

Cold Air Intake System

**Instruction Manual** P/N: 50-70093D / 50-70093R

---

Make: Jeep	Model: Grand Cherokee L (WL)	Year: 2021-2023	Engine: V8-5.7L
Make: Jeep	Model: Grand Cherokee (WL)	Year: 2022-2023	Engine: V8-5.7L



- Please read the entire instruction manual before proceeding.
- Ensure all components listed are present.
- If you are missing any of the components, call customer support at 951-493-7185.
- Ensure you have all necessary tools before proceeding.
- Do not attempt to work on your vehicle when the engine is hot.
- Retain factory parts for future use.

Label	Qty.	Description	Part Number
A1	1	Air Filter (Pro DRY S) for 50-70093D	21-91141
A2	1	Air Filter (Pro 5R) for 50-70093R	24-91141
B	1	Tube	05-5070093B1
C	1	Housing	05-5070093B2
D	1	Coupling, Silicone	05-01358
E	1	Grommet, Rubber	03-50167
F	1	Fitting, Air Temperature Sensor	05-01454
G	1	Fitting, SAE 15.82 (5/8") to 3/8" NPT	05-01339
H	1	Plug, Silicone	05-01482
J	1	Clamp, #064 (2-1/2" - 4-1/2")	03-50006
K	1	Clamp, #052 (2-13/16" - 3-3/34")	03-50008

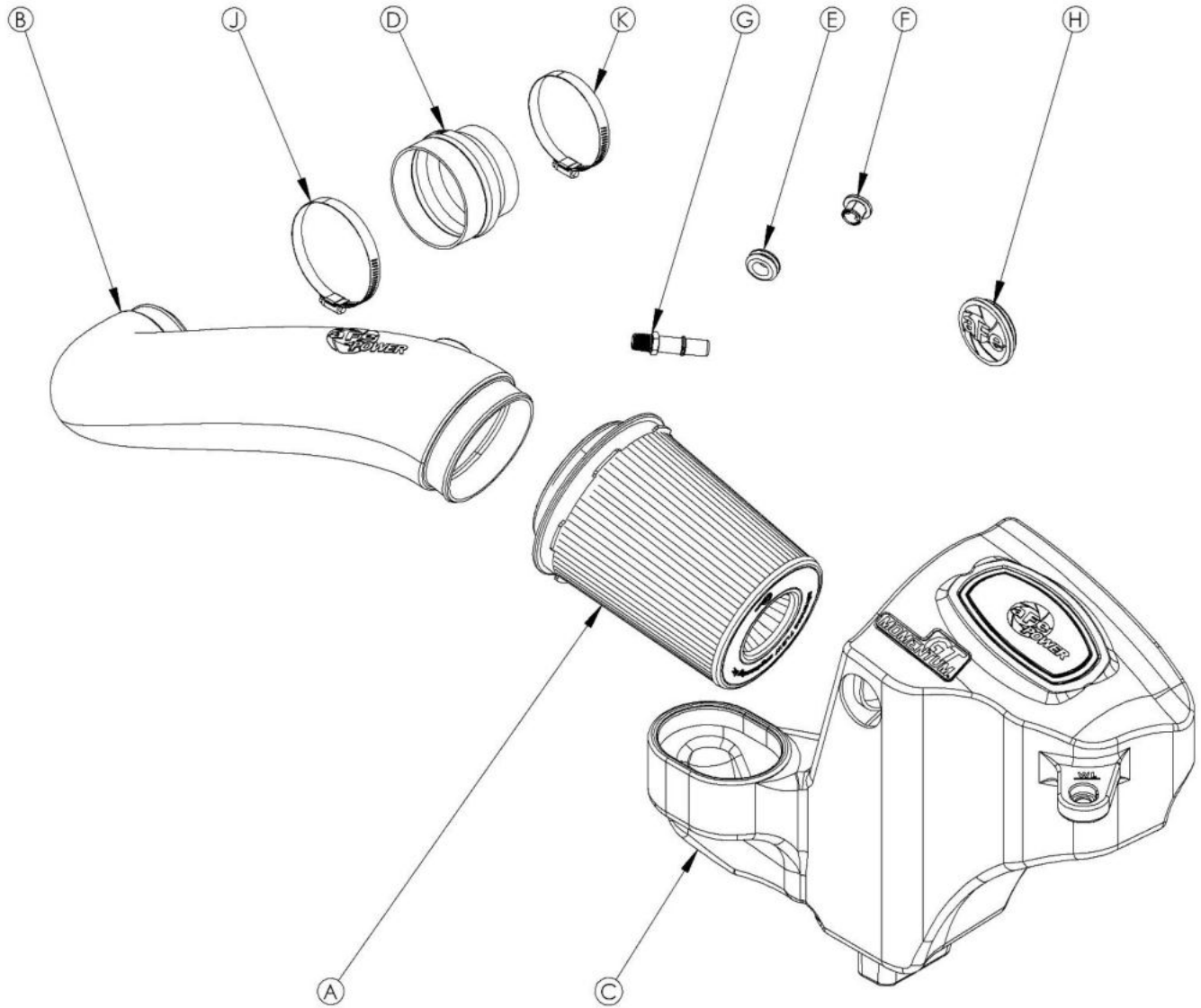
**Installation will require the following tools:**

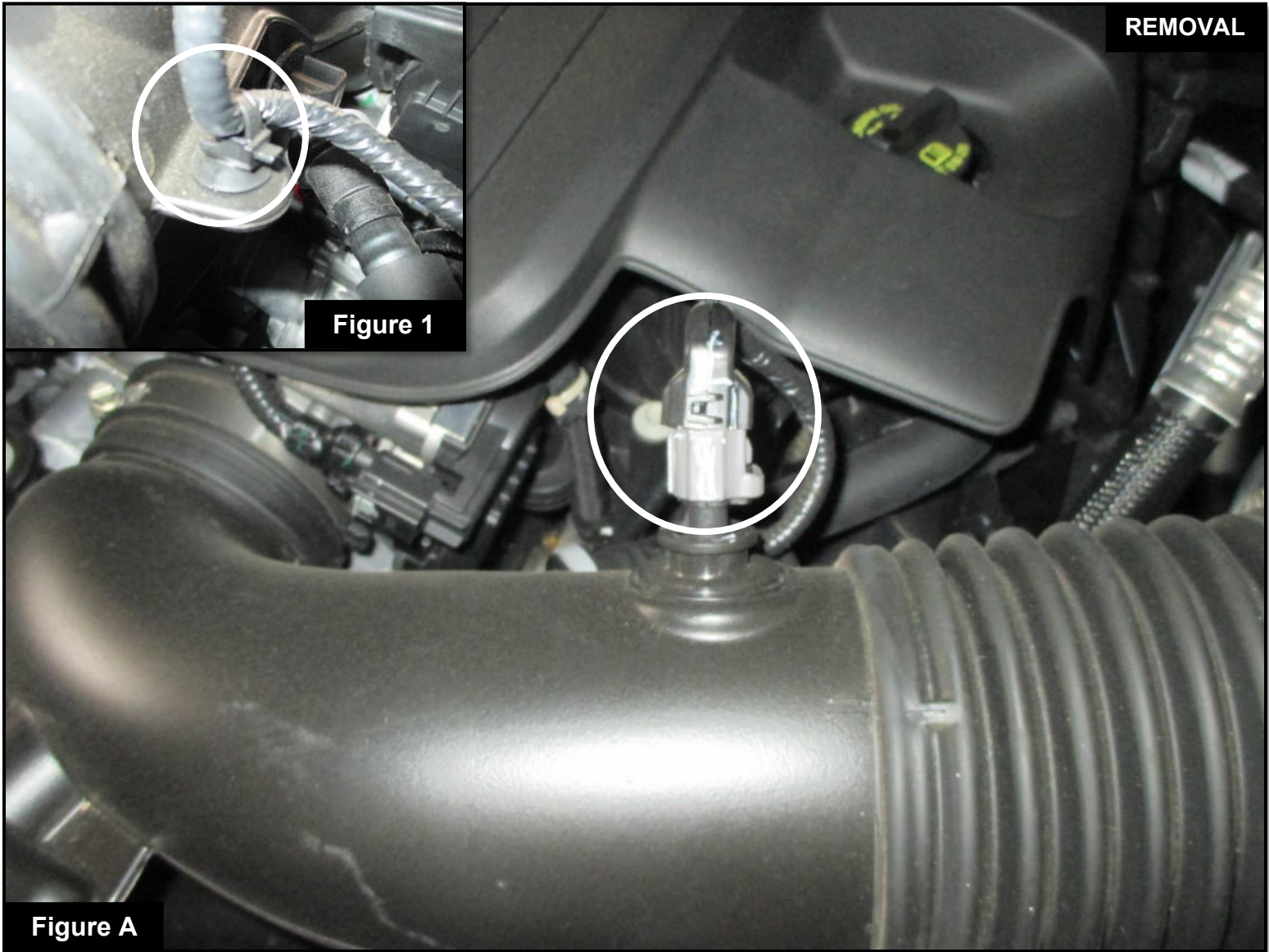
Socket set, socket wrench, and panel popper.

Warranty information available at <https://afepower.com/contact#warranty>.

**Emissions Disclaimer:**

This product is not currently CARB exempt and is not available for purchase in California or for use on any vehicle registered with the California Department of Motor Vehicles.

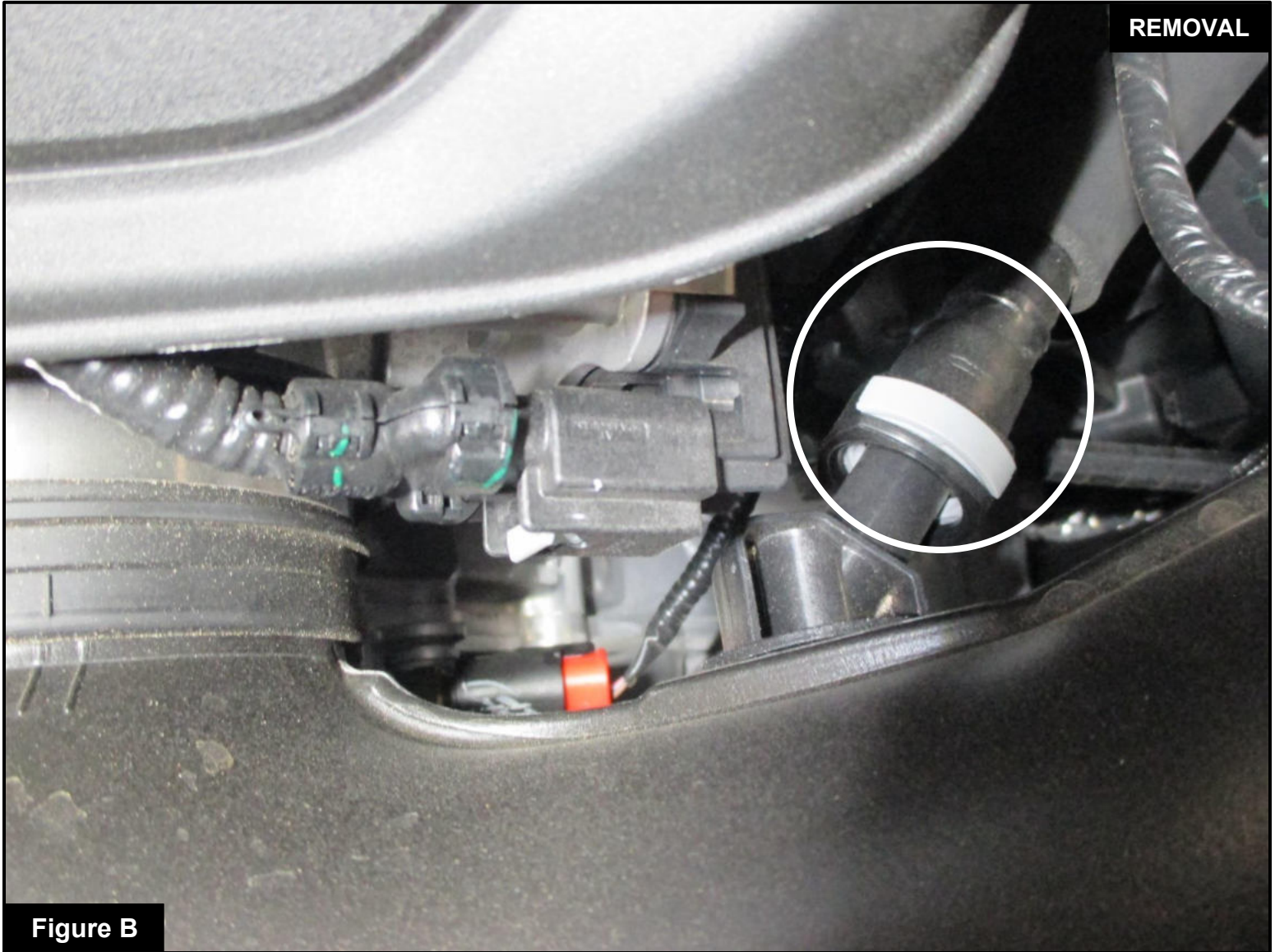




**Refer to Figure A for Steps 1-2**

Step 1: Disconnect the temperature sensor from the factory intake tube.

Step 2: Detach the temperature sensor harness from the factory intake tube. See **Figure 1**.



**Refer to Figure B for Step 3**

Step 3: Disconnect the crankcase vent (CCV) line from the factory intake tube.

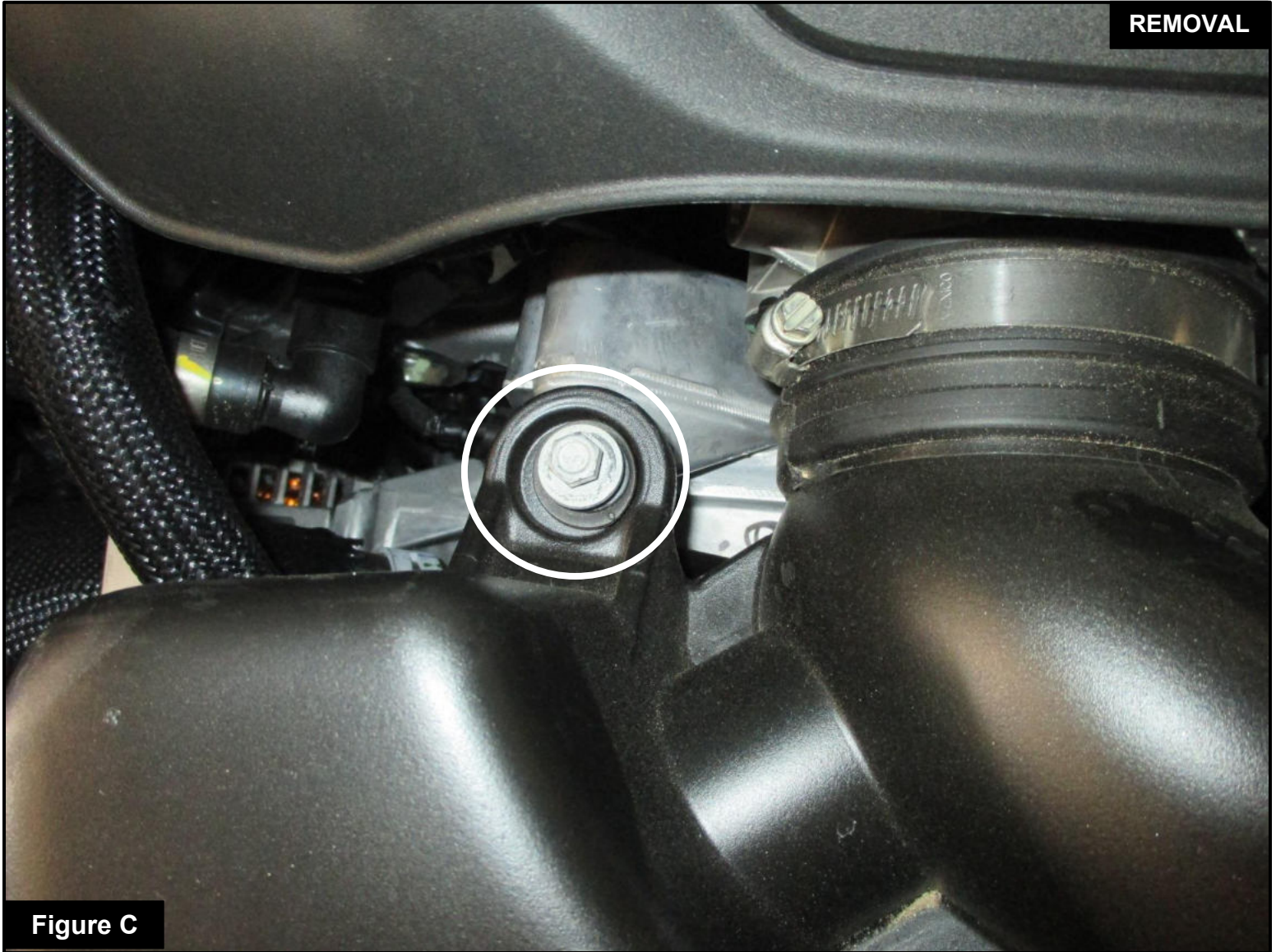


Figure C

**Refer to Figure C for Step 4**

Step 4: Remove the bolt on the factory intake tube.



Figure D

**Refer to Figure D for Step 5**

Step 5: Loosen the clamp on the throttle body.

**Figure E****Refer to Figure E for Steps 6-7**

Step 6: With a panel popper, remove the five (5) plastic clips holding the trim.

Step 7: Then, carefully remove the trim from the vehicle. Keep all parts for later use.

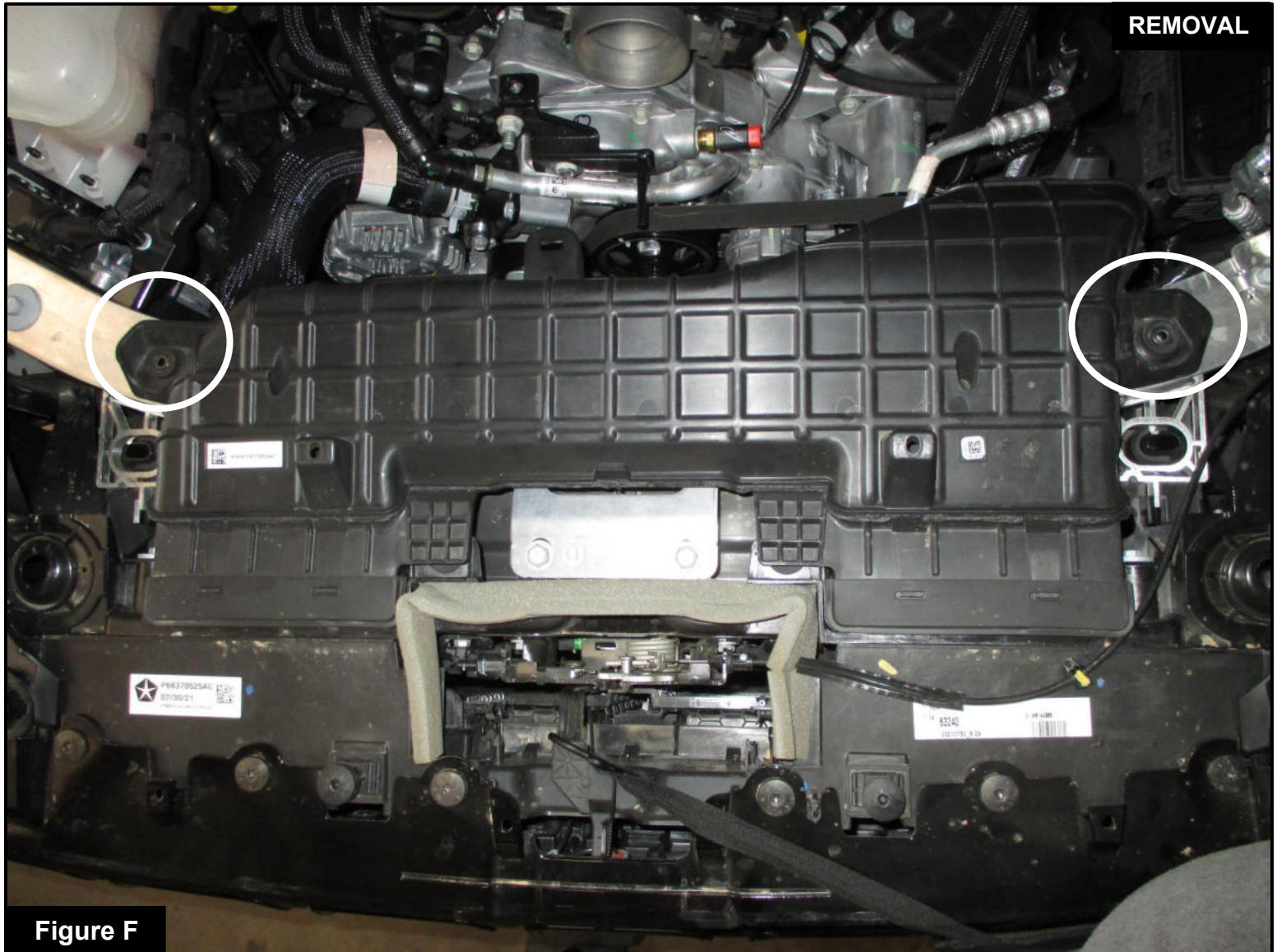
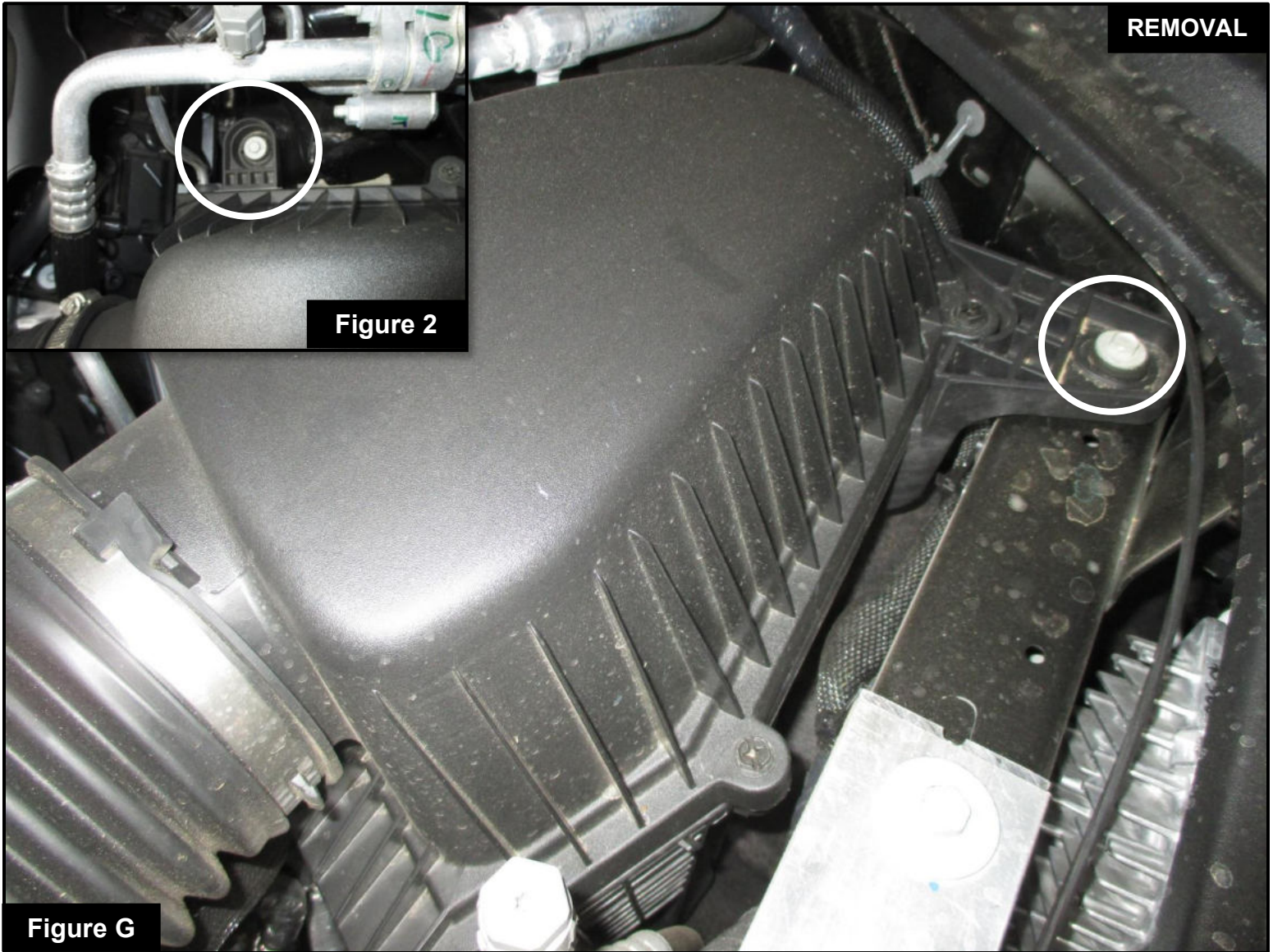


Figure F

**Refer to Figure F for Steps 8-9**

Step 8: Remove the two (2) bolts holding the factory intake scoop to the front bar.

Step 9: Lift the factory scoop to remove from the vehicle. Keep all parts for later use.



**Refer to Figure G for Steps 10-11**

Step 10: Remove the two (2) bolts on the factory housing. Keep bolts for later use.

Step 11: Next, lift both the factory housing and factory intake tube out of the vehicle.

**Figure H****Refer to Figure H for Steps 12-14**

Step 12: Install the supplied air filter into the aFe POWER housing. Firmly press the air filter into the large opening on the side, making sure the air filter tabs lock into place.

Step 13: Place the clamp over the flange of the air filter. Do not tighten at this time.

Step 14: Transfer the three (3) factory grommets from the factory housing to the aFe POWER housing.

**Figure I****Refer to Figure I for Step 15**

Step 15: This kit includes an optional plug to close off the auxiliary air inlets. Install the plug if you wish to close it off, to only capture cold air from the factory inlet.

**NOTE: Without the plug installed, the aFe POWER intake will capture the maximum air available. More airflow offers more power. Some of this air is picked up from inside the engine compartment and could be warmer air. Warmer air will affect the performance of the vehicle.**

**The plug installed on the housing will block off any hot engine air entering the housing to make sure the coolest air available is directed into the engine. The plug will also reduce the noise of the intake.**

**Figure J****Refer to Figure J for Steps 16-18**

Step 16: Install the supplied rubber grommet and air temperature fitting into the aFe POWER intake tube.

**NOTE: It may help to use lubricant to slip the temperature fitting into the grommet.**

Step 17: Transfer the temperature sensor from the factory intake tube to the aFe POWER intake tube.

Carefully pull up on the sensor to remove from the factory intake. Then, install the sensor into the aFe POWER intake tube by pushing it into the fitting and rotating clockwise quarter-turn, keeping it from sliding out.

**NOTE: Keep the factory O-ring installed on the temperature sensor to provide an air seal.**

Step 18: Install the supplied NPT fitting into the aFe POWER intake tube.

**NOTE: This is an NPT fitting. The small gap between the tube and hex is normal.**



Figure K

**Refer to Figure K for Steps 19-20**

Step 19: Install the aFe POWER housing into the vehicle by lining it up with the three (3) factory mounting locations.

Step 20: Loosely fit the bolts from **Step 10** on the aFe POWER housing. Do not tighten the bolts at this time.



Figure L

**Refer to Figure L for Steps 21-22**

Step 21: Install the supplied coupling with the supplied clamps onto the throttle body.

Step 22: Tighten the clamp between the coupling and throttle body only. Do not tighten the clamp at the open end of the coupling.



Figure M

**Refer to Figure M for Steps 23-27**

- Step 23: Install the assembled aFe POWER intake tube into the filter. Then, slide it into the coupling.
- Step 24: Connect the crankcase vent (CCV) line.
- Step 25: Connect the temperature sensor harness to the temperature sensor.
- Step 26: Adjust the aFe POWER housing and intake tube to sit properly, then tighten the bolts from **Step 20**.
- Step 27: Tighten the clamps at both ends of the aFe POWER intake tube.

**Figure N**

## **Refer to Figure N for Steps 28-30**

Step 28: Install and tighten the factory intake scoop from **Step 9**.

Step 29: Re-attach the factory trim panel from **Step 7**.

Step 30: Make sure all components and connections are secure. Your installation is now complete. Thank you for choosing aFe POWER!

**NOTE: Check all bolts, clamps, and connectors after 100-200 miles.**



**Page left blank intentionally.**



**Page left blank intentionally.**



***advanced FLOW engineering, inc.***

252 Granite Street Corona, CA 92879

<https://afepower.com/contact>