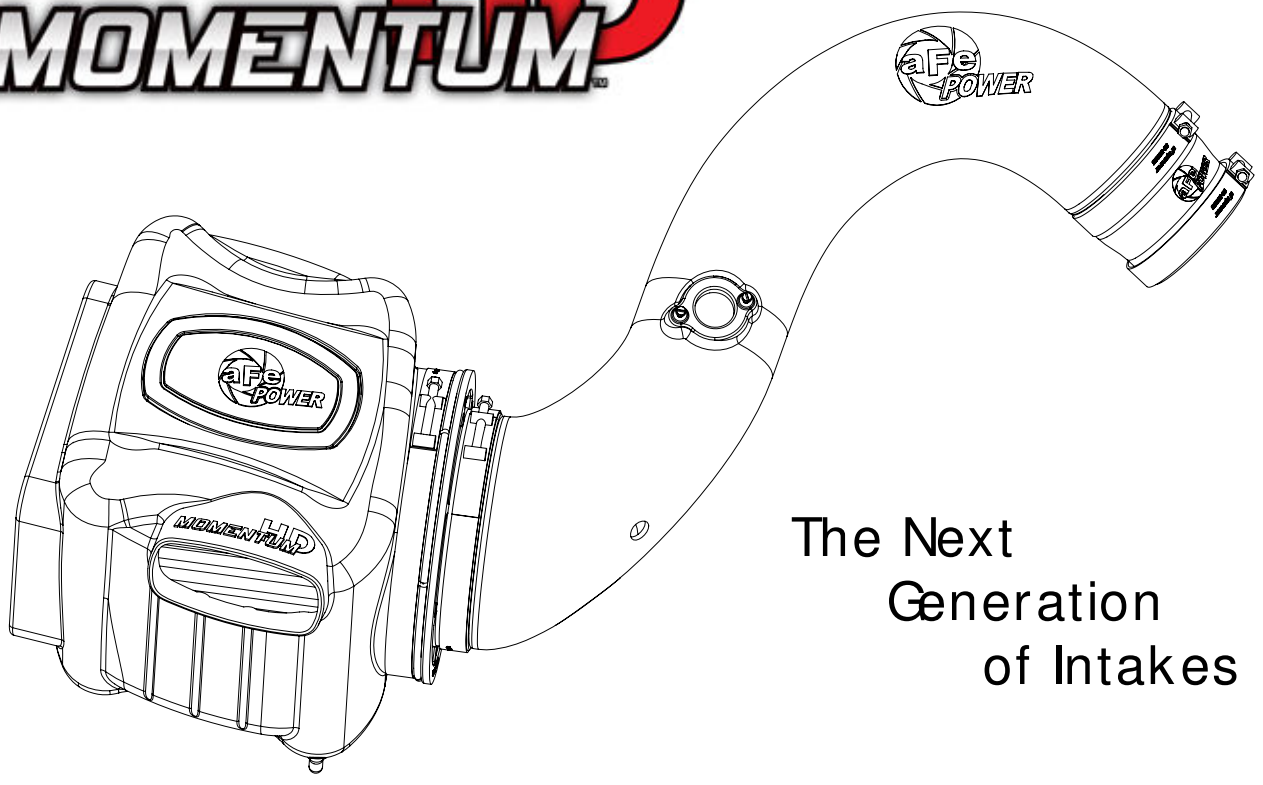




MOMENTUM HD



The Next
Generation
of Intakes

advanced FLOW engineering Momentum Air Intake

Instruction Manual P/N: 50-74002 / 51-74002

Make: **GM** Model: **Silverado HD/Sierra HD** Year: **2004.5-2005** Engine: **V8-6.6L (td) LLY**

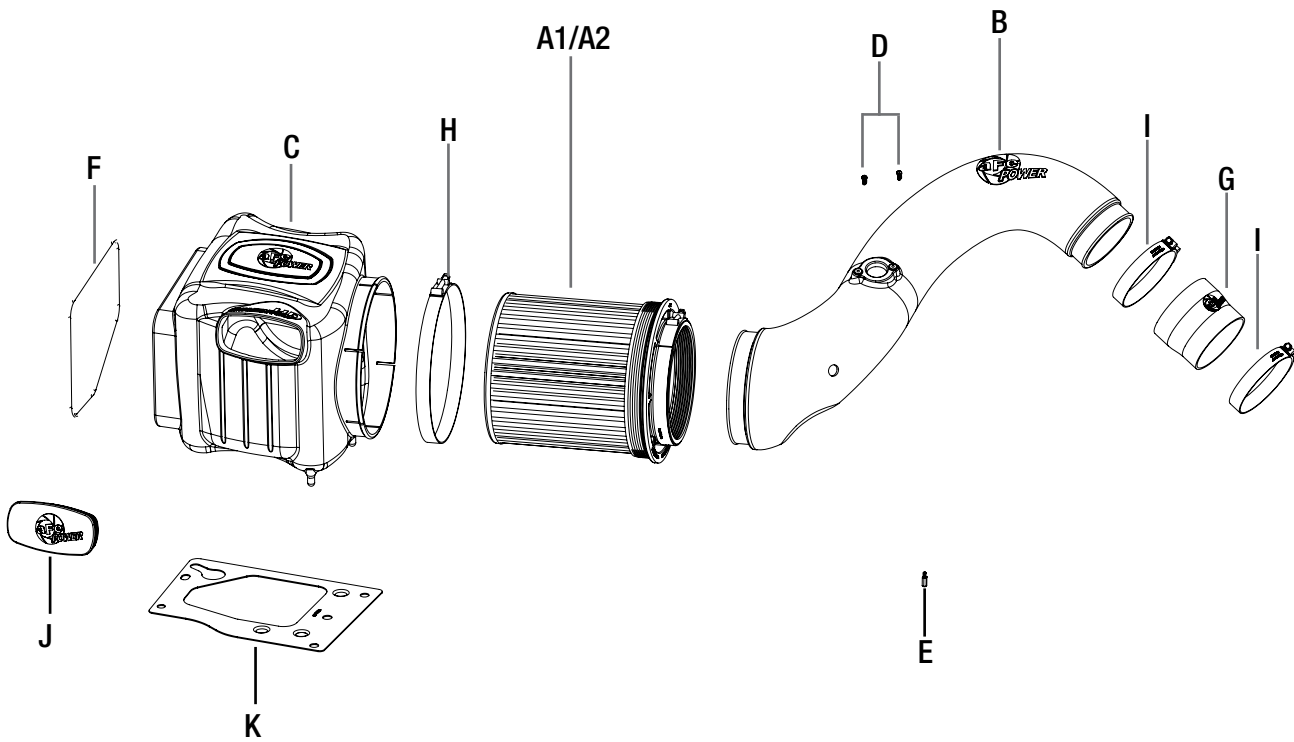


- Please read the entire instruction manual before proceeding.
- Ensure all components listed are present.
- If you are missing any of the components, call technical support at 951-493-7100 or e-mail tech@afepower.com.
- Ensure you have all necessary tools before proceeding.
- Do not attempt to work on your vehicle when the engine is hot.
- Disconnect both the negative battery terminal before proceeding.
- Retain factory parts for future use.

Label	Qty.	Description	Part Number
A1	1	Air Filter (Blue Media)	20-91059
A2	1	Air Filter (Grey Media)	21-91059
B	1	Tube	05-74002B1
C	1	Housing	05-74003B2
D	2	Screw, M4 x .7 x 8	03-50034
E	1	Torx Bit: T20	03-50066
F	1	Trim Seal: 26" (inches)	05-00072
G	1	Coupling, Silicone Reducer	05-01203
H	1	Clamp T-bolt (8-5/16-8-5/8)	03-50267
I	2	Clamp T-bolt (3-3/4-4-1/16)	03-50265
J	1	Plug, Housing	05-01202
K	1	Plate, Mounting	05-01291

Installation will require the following tools:
Phillips screw driver, 8mm nut driver, 10mm and 11mm socket and extension

Warranty Information available at: <https://afepower.com/contact#warranty>



**Refer to Figure A for Steps 1-3**

Step 1: Disconnect Mass Air Flow Sensor (MAF) ① .

Step 2: Loosen all intake tube clamps ② using a 8mm nut driver.

Step 3: Remove the factory intake tube and air box out of the vehicle.

(Use an upward pull to release the air box from its mounting grommets)



Figure B

Refer to Figure B for Step 4

Step 4: Remove the factory aluminum foil (3) from the inside of the fender to allow more cold air to the air box.



Figure C

Refer to Figure C for Step 5

Step 5: Remove the factory air box mounting plate and replace with the aFe mounting plate (4) using the factory bolts. Transfer the factory mounting grommets from the factory plate to the aFe mounting plate.



Figure D

Refer to Figure D for Step 6

Step 6: Slide the air filter in the aFe air box. Install supplied T-bolt clamps.
(Do NOT tighten clamps at this time)



Figure E

Refer to Figure E for Steps 7-8

Step 7: Install the trim seal (5) on the edge of the Momentum HD air box.

Step 8: Remove the retaining plug (6) from the factory (OEM) air box and install it on the Momentum HD air box.



Figure F

Refer to Figure F for Step 9

Step 9: Install the Momentum HD air box into the vehicle. Firmly push down into the factory mounting grommets.

(Use the supplied plug to close the additional air inlet if you want a completely sealed air box)

**Figure G****Refer to Figure G for Steps 10-14**

- Step 10: Remove the MAF sensor from the factory intake tube using T-20 torx bit.
- Step 11: Remove the filter minder and the grommet it sits in from the factory (OEM) air box.
- Step 12: Install the MAF sensor in the Momentum intake tube using the supplied screws.
- Step 13: Install the factory grommet for the filter minder on the Momentum intake tube. Firmly push the filter minder into the grommet on the intake tube.
- Step 14: Install the furnished silicone hump coupler and the T-bolt clamps on the aFe intake tube.
(Do NOT tighten clamps at this time)

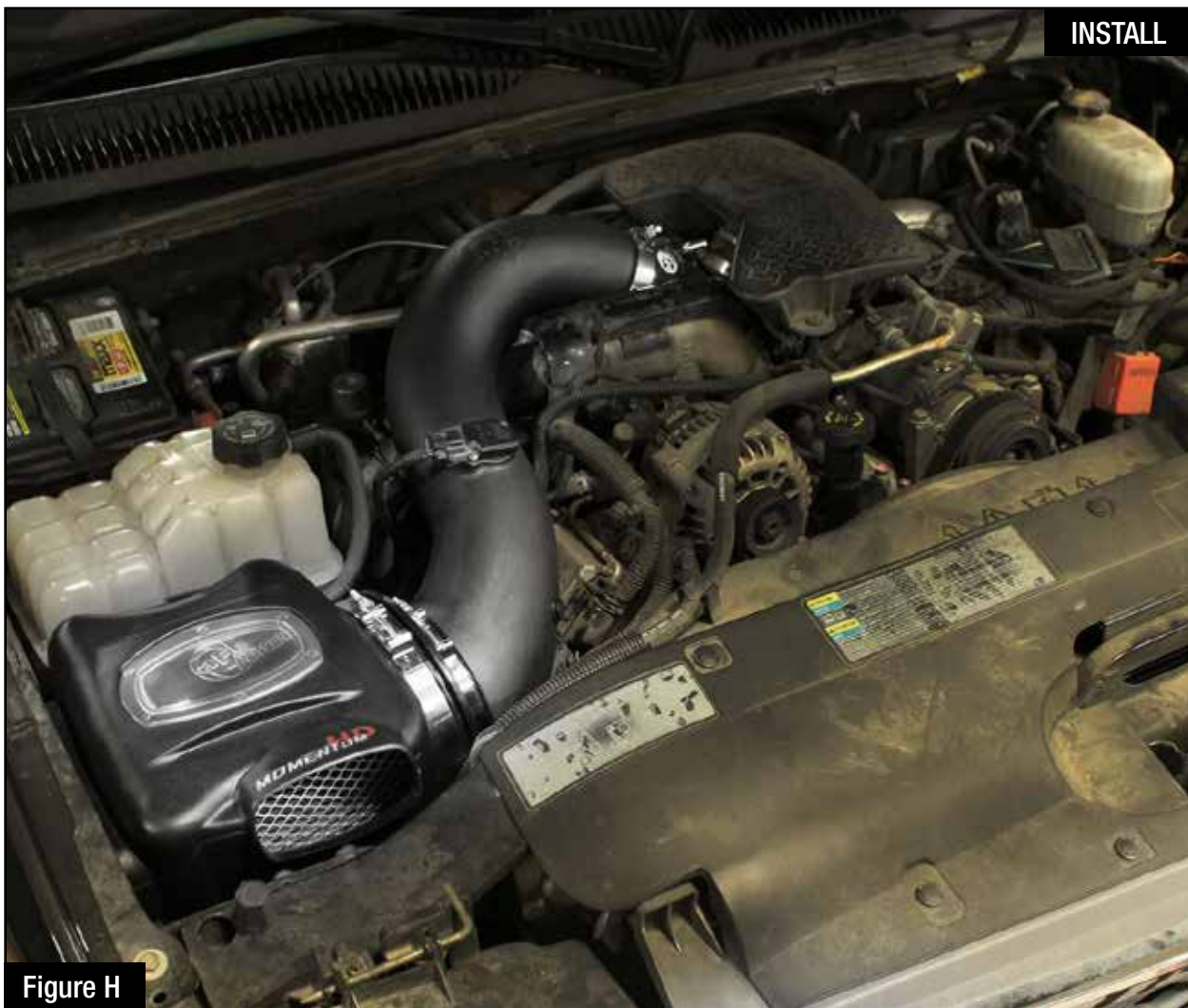


Figure H

Refer to Figure H for Steps 15-18

Step 15: Install the Momentum intake tube into the vehicle. slide the coupling into the filter side first, then rotate the tube down and slide it onto the turbo inlet.

Step 16: Tighten all the T-bolt clamps.

Step 17: Re-connect the MAF sensor.

Step 18: Your installation is now completed. Thank you for choosing aFe POWER!

NOTE: Retighten all connections after approximately 100-200 miles.

Place enclosed CARB EO sticker on or near the device on a smooth, clean surface.

EO identification label is required to pass the smog inspection.



advanced FLOW engineering, inc.
252 Granite Street Corona, CA 92879
TEL: 951.493.7155 • TECH: 951.493.7100
E-Mail: Tech@aFepower.com