

**advanced FLOW engineering** Rapid Induction Air Intake System

**Instruction Manual** P/N: 52-10008D / 52-10008R

Make: Jeep  
Make: Jeep

Model: Wrangler (JL)  
Model: Gladiator (JT)

Year: 2018-2021  
Year: 2020-2021

Engine: V6-3.6L  
Engine: V6-3.6L



- Please read the entire instruction manual before proceeding.
- Ensure all components listed are present.
- For technical support please call 951-493-7185.
- Ensure you have all necessary tools before proceeding.
- Do not attempt to work on your vehicle when the engine is hot.
- Retain factory parts for future use.

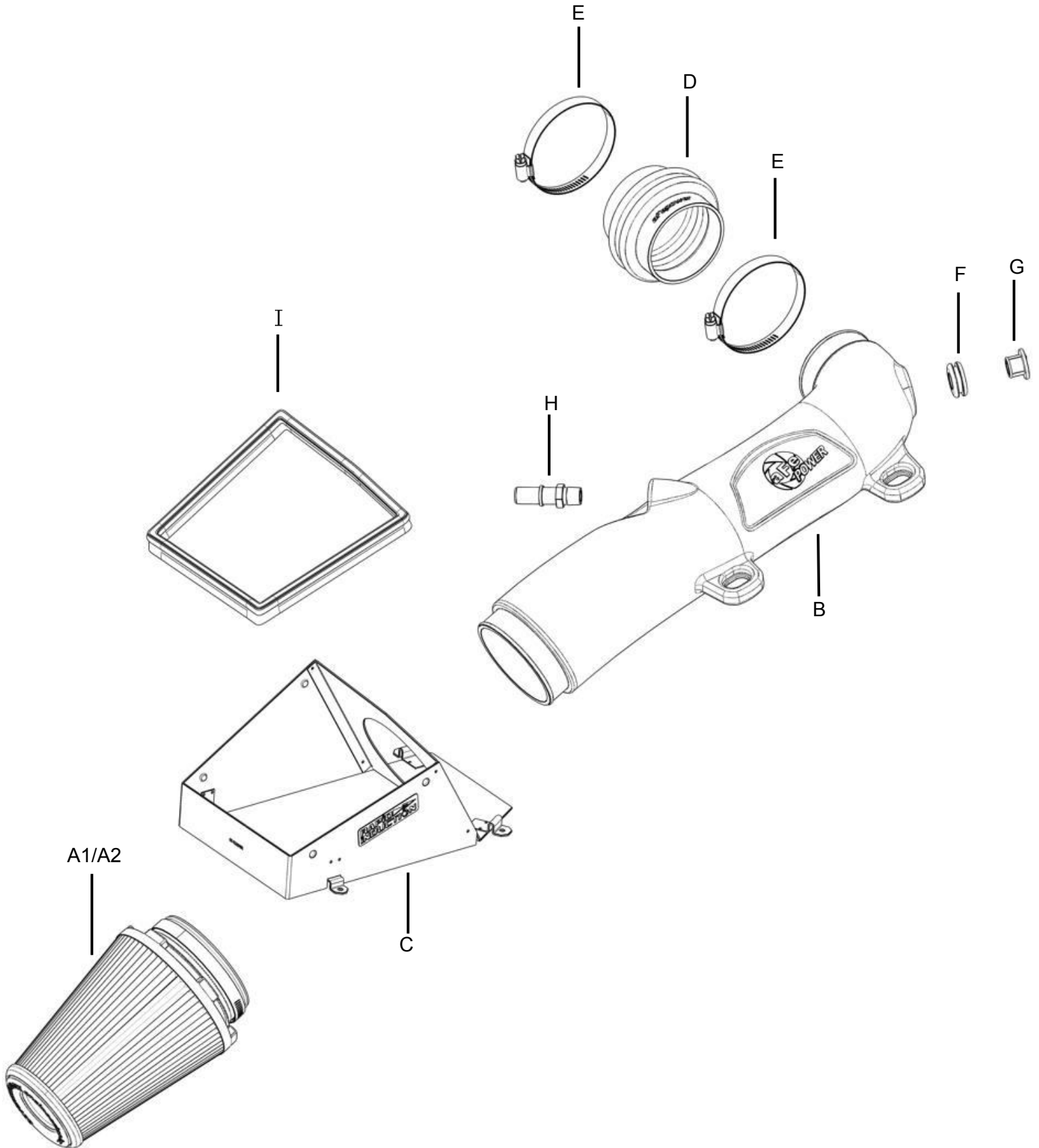
Label	Qty.	Description	Part Number
A1	1	Air Filter (Pro 5R)	22-91201R
A2	1	Air Filter (Pro DRY S)	22-91201D
B	1	Tube	05-5210008B1
C	1	Housing	05-5210008B2
D	1	Coupling, Silicone Bellow: 3-1/4"ID x 3"L	05-01480
E	2	Clamp, 048 (2-9/16" – 3-1/2")	03-50007
F	1	Grommet, Rubber	03-50167
G	1	Fitting, Air Temp Sensor	05-01454
H	1	Fitting, Vent Tube	05-01339
I	1	Trim Seal (29")	05-00072

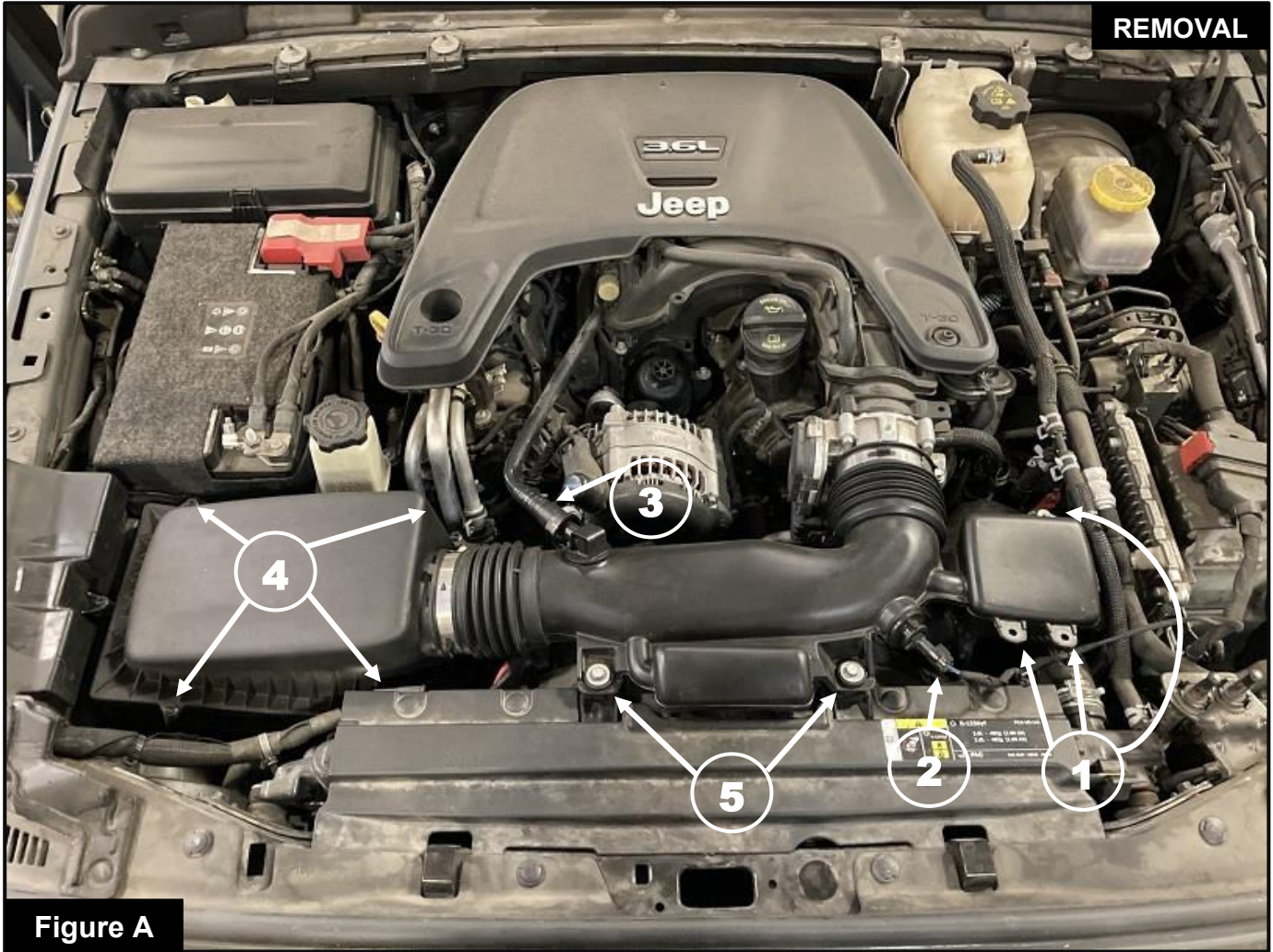
**Installation will require the following tools:**

8mm nut driver, 8mm/10mm deep socket and driver, cutting pliers, adjustable wrench, panel popper tool.

Warranty Information available at <https://afepower.com/contact#warranty>

**Emissions Disclaimer:** This product is not currently CARB exempt and is not available for purchase in California or for use on any vehicle registered with the California Department of Motor Vehicles.




**Figure A**

### **Refer to Figure A for Steps 1-7**

- Step 1: Using a panel popper tool, release the three Christmas tree ties ① that connect to the intake tube.
- Step 2: Disconnect the Intake Air Temperature (IAT) sensor plug ② be careful not to damage the sensor.
- Step 3: Disconnect the Crank Case Vent (CCV) quick connect fitting ③ on top of the intake tube.
- Step 4: Using an 8mm nut driver or socket, remove the four screws ④ in the upper air box.
- Step 5: Using a 10mm socket, remove the two screws ⑤ holding the intake tube to the radiator shroud.
- Step 6: Using an 8mm nut driver, loosen the two hose clamps at both ends of the intake tube.
- Step 7: Remove the factory intake tube and upper half of the air box.



Figure B

**Refer to Figure B for Steps 8-9**

Step 8: Remove the factory air filter and install the Rapid Induction housing with the factory screws (6) using an 8mm nut driver.

Step 9: Install trim seal around the top edge of the Rapid Induction housing (7) Some cutting of the trim seal may be required for proper fitment.



Figure C

### Refer to Figure C for Steps 10-11

Step 10: Install the vent tube fitting (8) in the location shown on the aFe POWER intake tube and tighten using an adjustable wrench.

**\*NOTE:** Exposed threads shown are normal. This is an NPT thread. Do not overtighten.

Step 11: Install the supplied grommet and plastic temp sensor bung (9) into the aFe POWER intake tube. If needed, use a light penetrating oil to help push the plastic bung into the grommet.

**Figure D****Refer to Figure D for Steps 12-13**

Step 12: Remove the two factory grommets and spacers from the OE intake tube. If needed, use a light penetrating oil to remove the spacer from the grommet.

Step 13: Install the two factory grommets and spacers (10) into the aFe POWER intake tube. Make sure the spacers are orientated the same way as in the factory tube.



Figure E

**Refer to Figure E for Step 14**

Step 14: Install the aFe air filter into the Rapid Induction housing as shown. Make sure the flange on the filter (11) is completely seated around in the housing.



**Figure F**

**Refer to Figure E for Steps 15-21**

- Step 15: Loosely install the clamp onto the air filter, and install the hose clamps and coupler to the tube.
- Step 16: Install the aFe POWER intake tube with attached coupler onto the air filter and the throttle body.
- Step 17: Install the two screws (12) into the aFe POWER intake tube, from step 5.
- Step 18: Tighten all hose clamps (13) Make sure the coupler is completely seated onto the throttle body.
- Step 19: Reconnect the CCV quick connect (14) on the aFe POWER intake tube.
- Step 20: Remove the IAT sensor from the factory intake tube and install it into the aFe POWER intake tube, then reconnect the electrical connector (15) to the sensor.
- Step 21: Your installation is now complete. Thank you for choosing aFe POWER.

**NOTE: Check all bolts, clamps, and connectors after 100-200 miles.**



Page Left Blank Intentionally



Page Left Blank Intentionally



***advanced FLOW engineering, inc.***

252 Granite Street Corona, CA 92879  
TEL: 951.493.7100 • TECH: 951.493.7134  
E-Mail: Tech@aFepower.com

8/20/21 ER