



advanced FLOW engineering Silver Bullet Throttle Body Spacer
Instruction Manual P/N: 46-34023B (Fits with aFe POWER Air Intakes)
Make: CHEVROLET Model: CORVETTE (C8) Year: 2020-2021 Engine: V8-6.2L



- Please read the entire instruction manual before proceeding.
- Ensure all components listed are present.
- If you are missing any of the components, call customer support at 951-493-7185.
- Ensure you have all necessary tools before proceeding.
- Do not attempt to work on your vehicle when the engine is hot.
- Retain factory parts for future use.

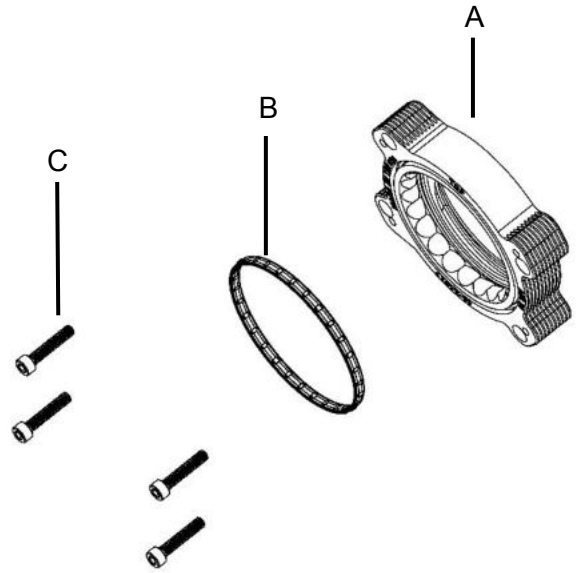
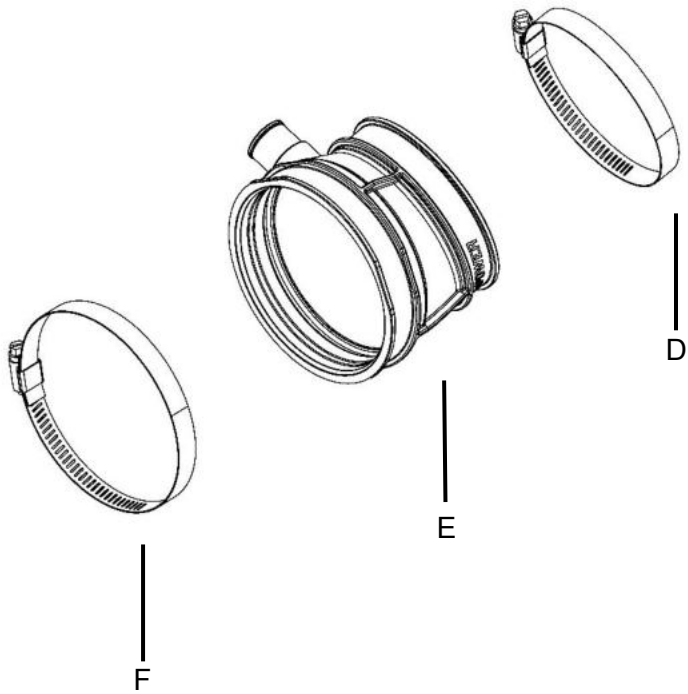
Label	Qty.	Description	Part Number
A	1	Silver Bullet Throttle Body Spacer (Black)	R46-34023B
B	1	O-ring	03-50663
C	4	Screw, Socket Head Cap: M6 x 1.0 x 30	03-50382
D	1	Clamp, 064 (2-1/2" - 4-1/2 ")	03-50006
E	1	Coupling, Silicone	05-01572
F	1	Clamp, 072 (3" – 5")	03-50010

Installation will require the following tools:

8mm socket or flathead screwdriver, 5mm hex key, and pliers.

Warranty Information available at <https://afepower.com/contact#warranty>

Emissions Disclaimer: This product is not currently CARB exempt and is not available for purchase in California or for use on any vehicle registered with the California Department of Motor Vehicles.



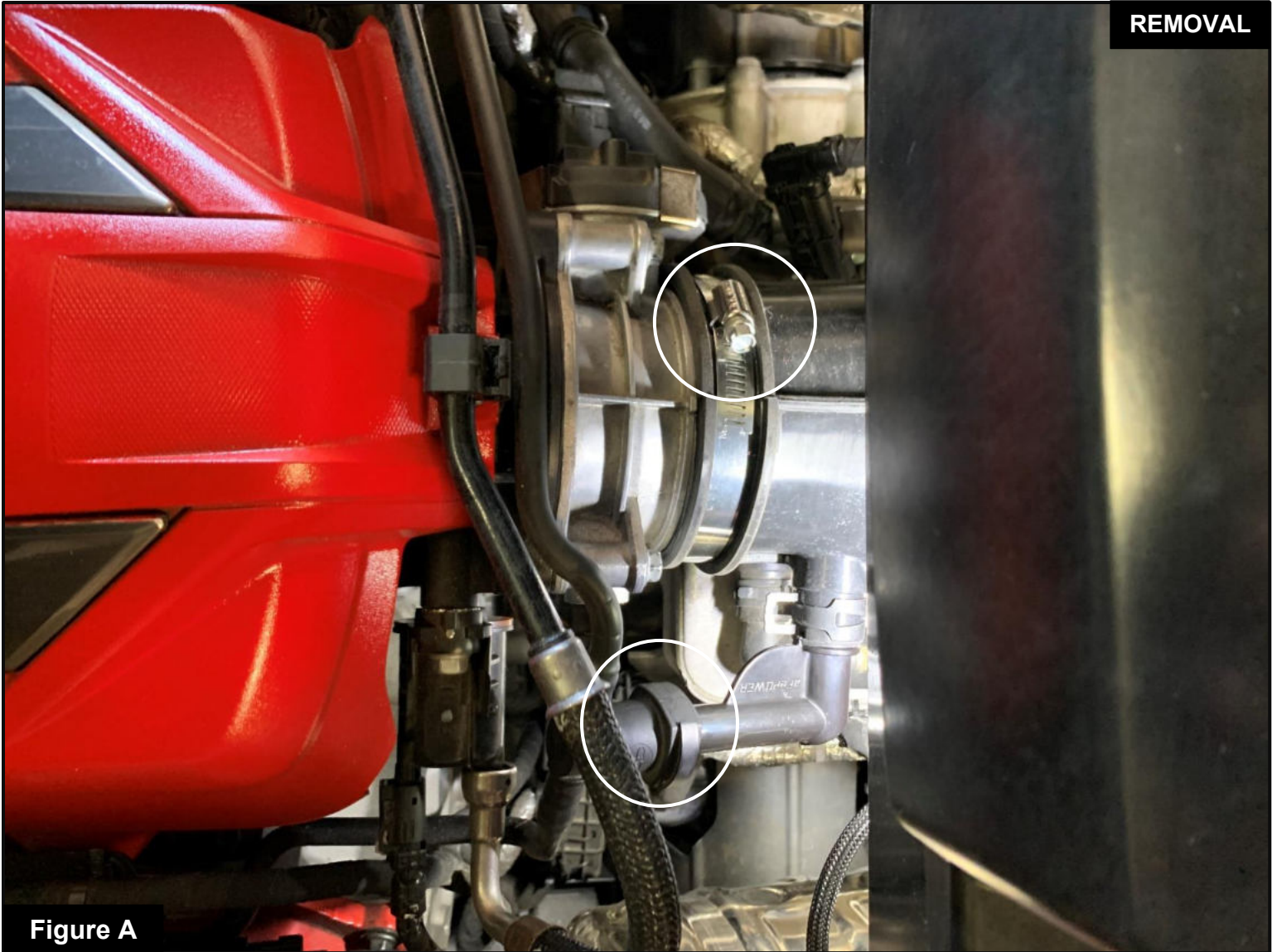


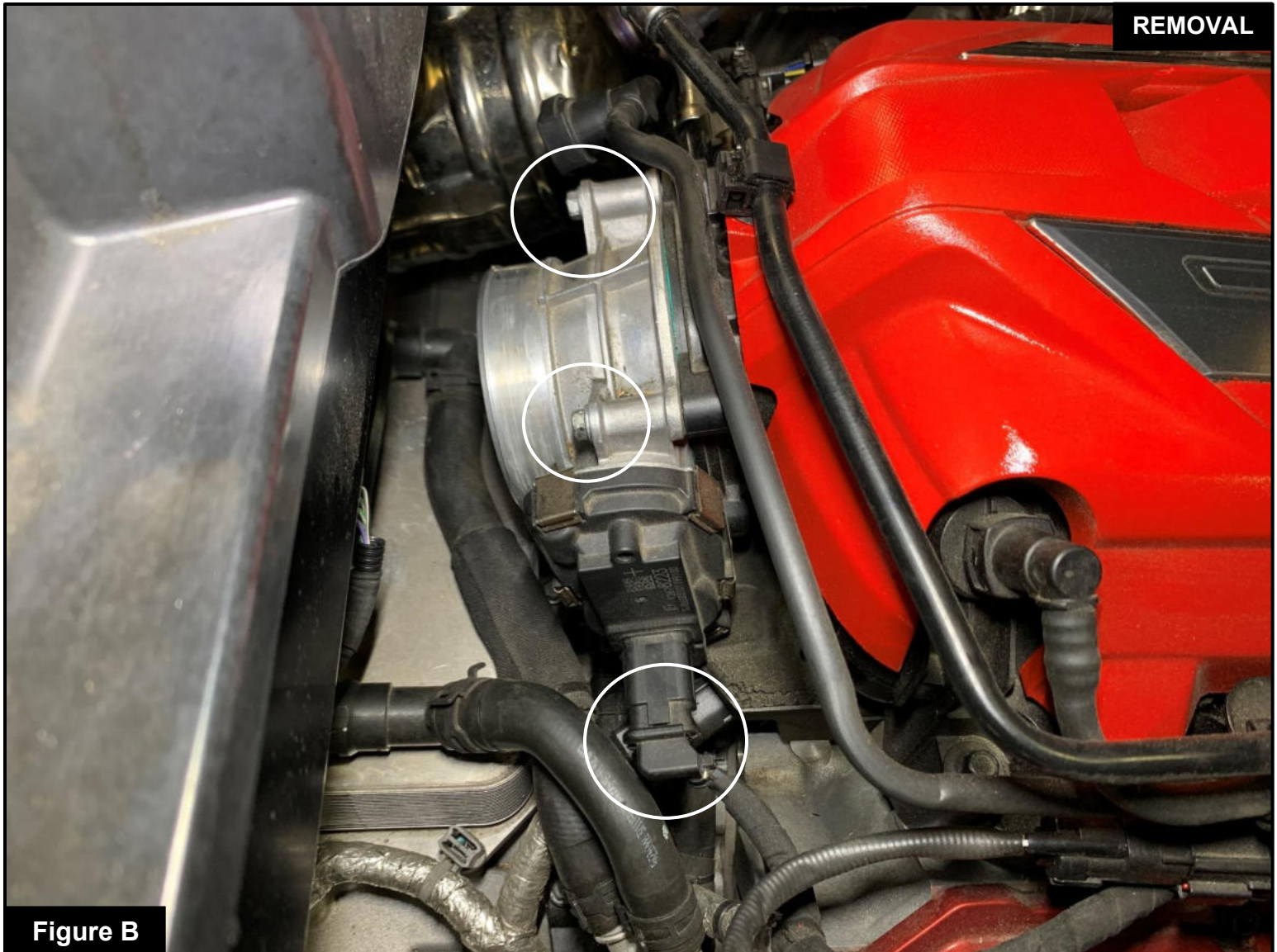
Figure A

Refer to Figure A for Steps 1-2

Note: This instruction sheet shows how to install the aFe POWER Silver Bullet Throttle Body Spacer with an aFe POWER Air Intake System already installed. If you are installing an aFe POWER intake at the same time, install the Throttle Body Spacer after Step 21 in the instruction manual included with your aFe POWER Intake.

Step 1: Disconnect the quick disconnect fitting from the throttle body coupling, by pushing down on the black tab and pulling them apart.

Step 2: Loosen the clamps securing the coupling to the aFe POWER intake tube and the throttle body, using an 8mm socket or flathead screwdriver. Remove the coupling from the vehicle. This coupling will be replaced with the new shorter coupling furnished in this kit.



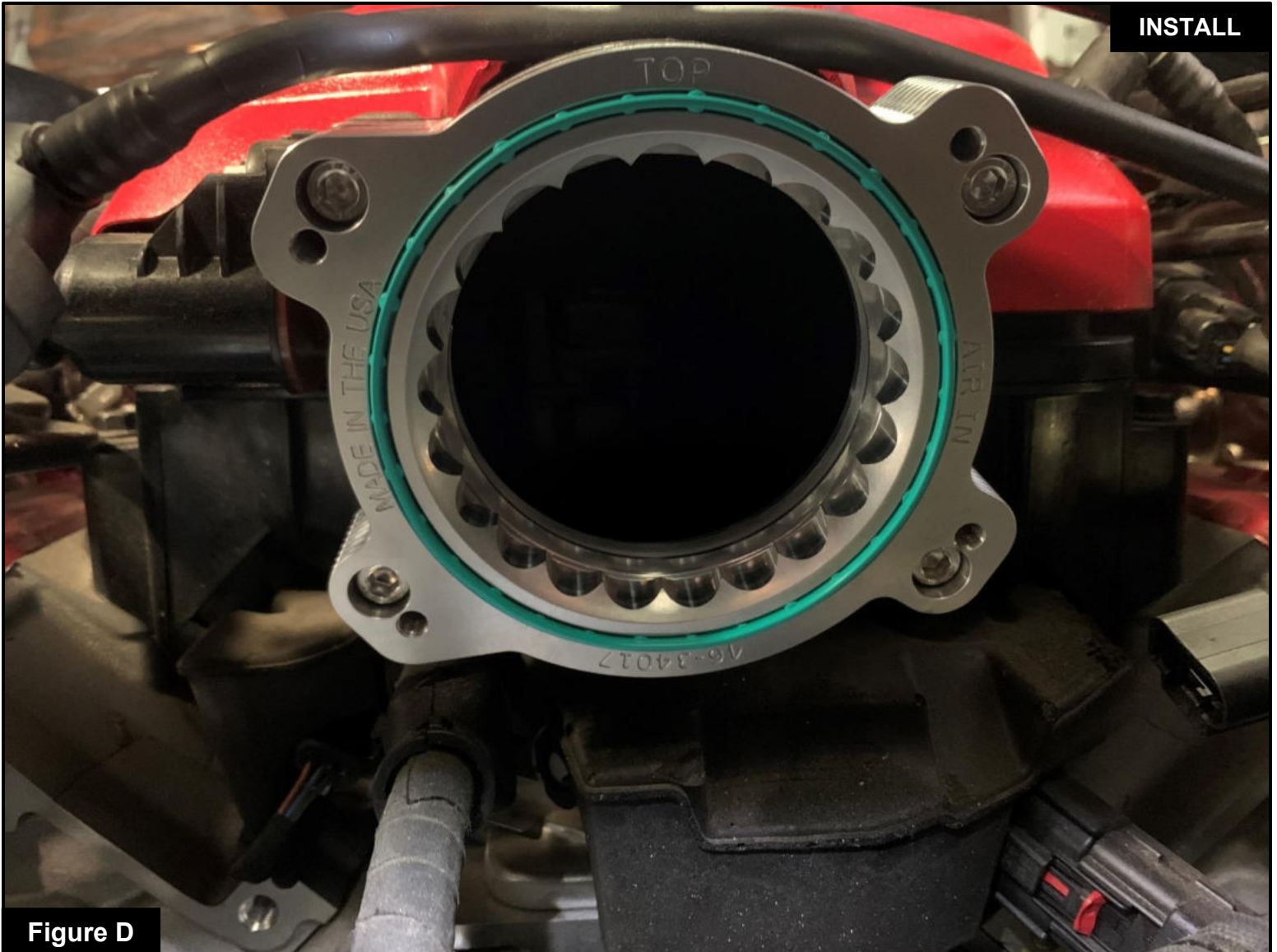
Refer to Figure B for Steps 3-4

Step 3: Disconnect the harness from the throttle body, by squeezing the locking tab on the bottom side of the connector and pulling it out.

Step 4: Remove the (4) 10mm screws securing the throttle body to the intake manifold, and then remove the throttle body from the vehicle. These factory screws will be reused.

**Figure C****Refer to Figure C for Step 5**

Step 5: Install the provided O-ring onto the throttle body spacer groove. Make sure it is fully seated.


Figure D

Refer to Figure D for Step 6

Step 6: Install the throttle body spacer onto the intake manifold using the provided bolts. The face with no engraving will go against the intake manifold and the “Top” engraving will be facing up. Make sure the factory O-ring stayed into the groove on the intake manifold. Secure it with the provided M6 screws and tighten with a 5mm hex key.



Figure E

Refer to Figure E for Steps 7-8

Step 7: Using the factory screws, reinstall the throttle body to the aFe POWER throttle body spacer. The throttle body will be slightly clocked.

Step 8: Reconnect the harness to the throttle body. Make sure the connector is fully pushed in.

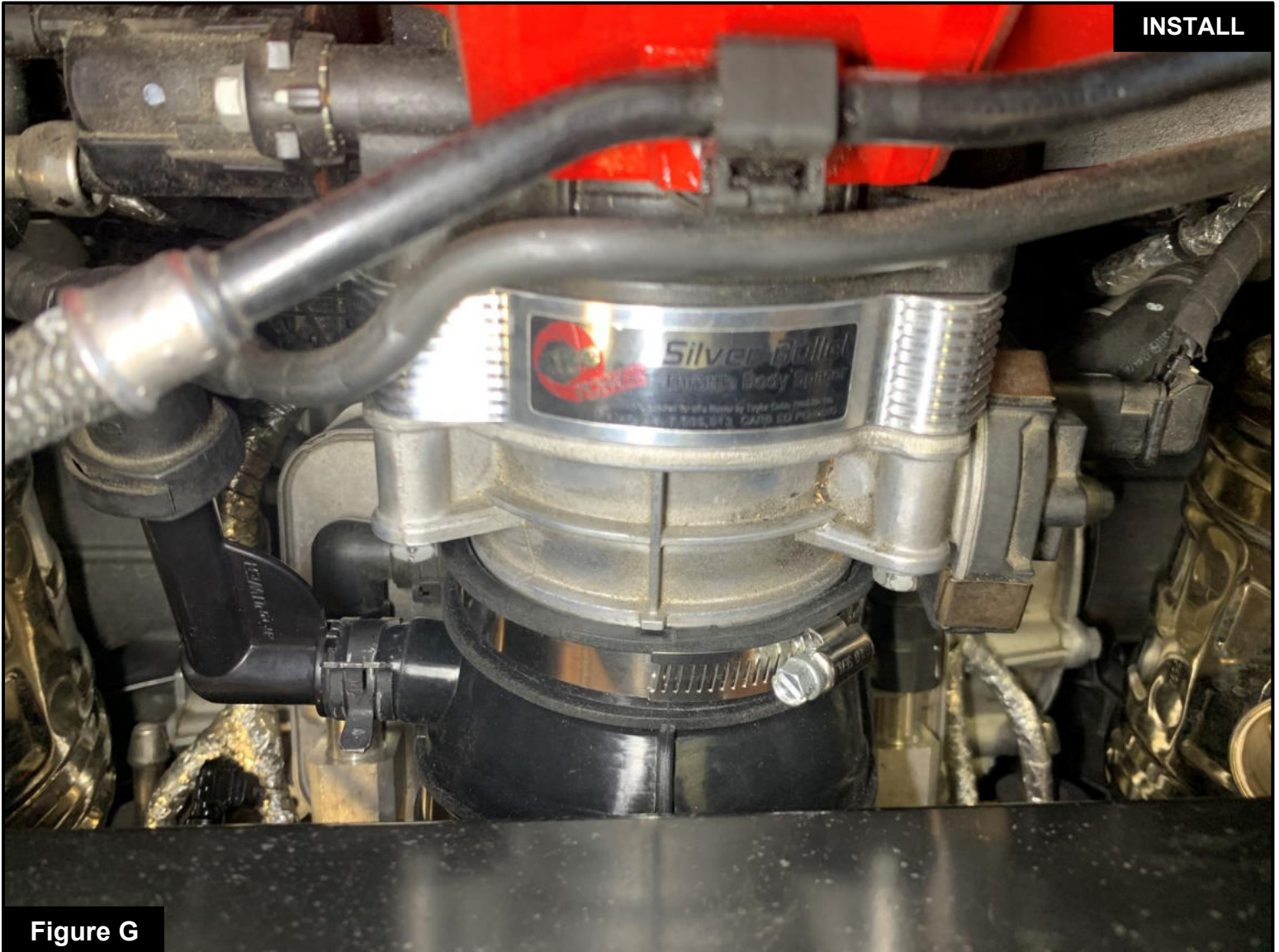


Figure F

Refer to Figure F for Steps 9-10

Step 9: Transfer the plastic 90-degree fitting from the aFe POWER intake coupling into the aFe POWER throttle body spacer (shorter) coupling and secure it with the same spring clamp. Make sure the small tab on the fitting is aligned with the notch in the coupling.

Step 10: Loosely place the clamps onto the coupling.

**Figure G****Refer to Figure G for Steps 11-12**

Step 11: Install the coupling onto the throttle body. The rib on top of the coupling should be pointing up.

Step 12: Reconnect the quick disconnect fitting to the aFe POWER fitting.

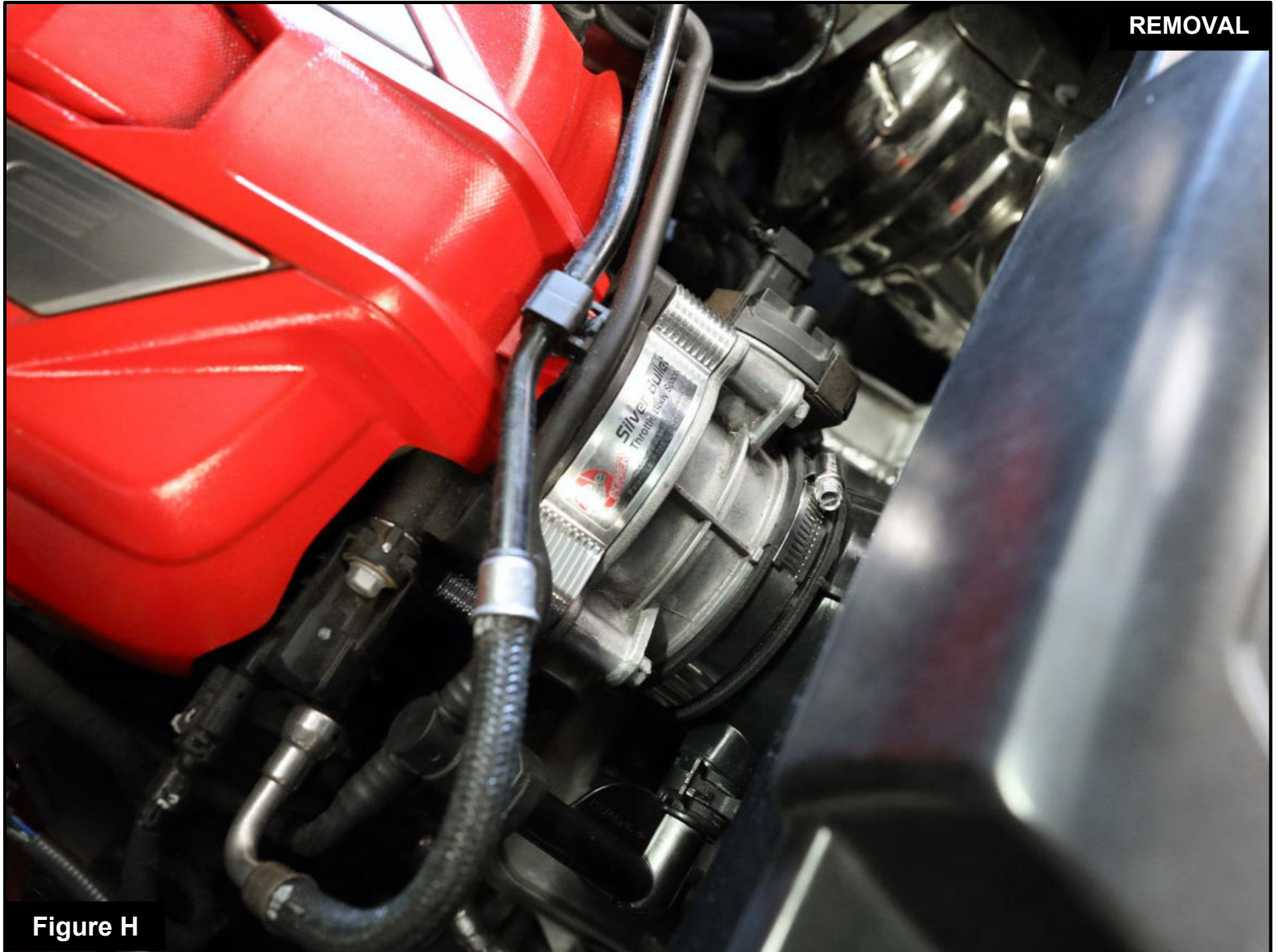


Figure H

Refer to Figure H for Step 13

Step 13: Tighten the clamps securing the coupling to the throttle body and to the intake tube with an 8mm nut driver or flathead screwdriver.

Your installation is now complete. Verify all connection and screws are secured. Thank you for choosing aFe POWER



advanced FLOW engineering, Inc.

252 Granite Street Corona, CA 92879
TEL: 951.493.7100 • TECH: 951.493.7185
E-Mail: Tech@aFepower.com