

advanced FLOW engineering

Momentum Air Intake System

Instruction Manual P/N: 56-70036R / 56-70036D

Make: Hyundai

Model: Kona

Year: 2018-2021

Engine: L4-2.0L



- Please read the entire instruction manual before proceeding.
- Ensure all components listed are present.
- If you are missing any of the components, call customer support at 951-493-7185.
- Ensure you have all necessary tools before proceeding.
- Do not attempt to work on your vehicle when the engine is hot.
- Retain factory parts for future use.

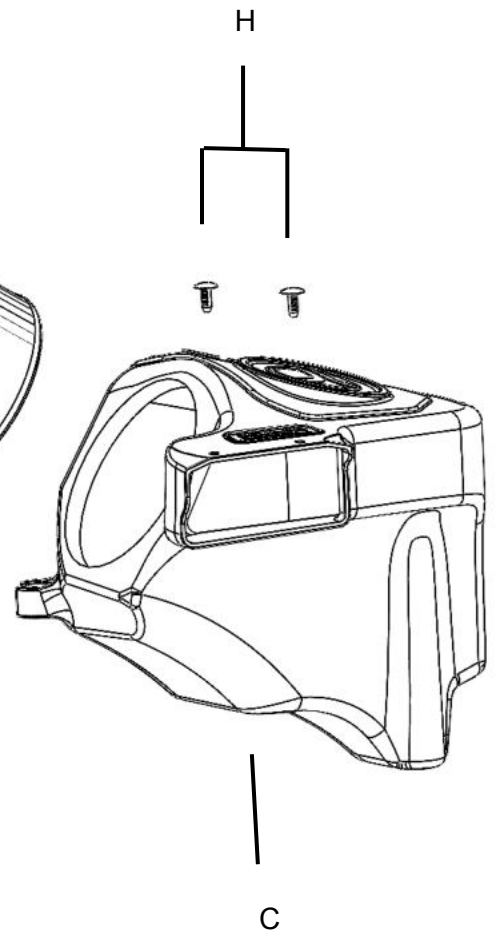
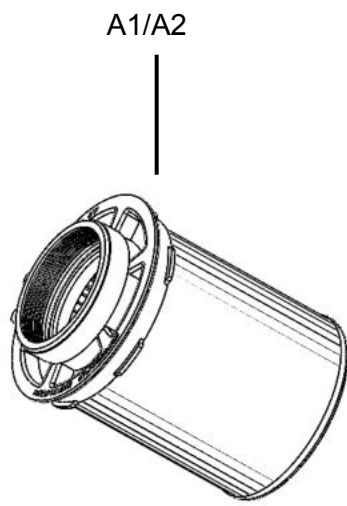
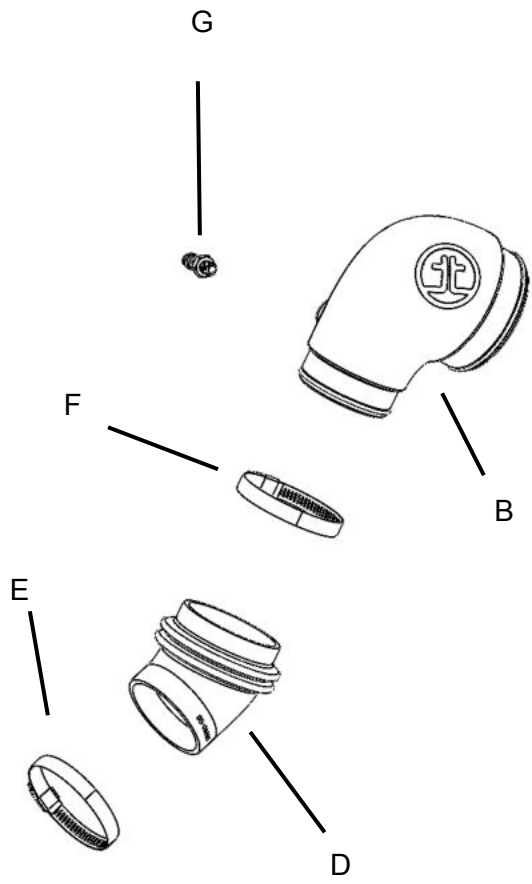
Label	Qty.	Description	Part Number
A1	1	Air Filter (Pro 5R)	24-91153
A2	1	Air Filter (Pro DRY S)	21-91153
B	1	Tube	05-5670036B1
C	1	Housing	05-5670032B2
D	1	Coupling, Silicone Elbow Reducer	05-01693
E	1	Clamp, #044	03-50019
F	1	Clamp, #052	03-50008
G	1	11mm Barbed Fitting	03-50615
H	2	Retainer Clips	03-50616

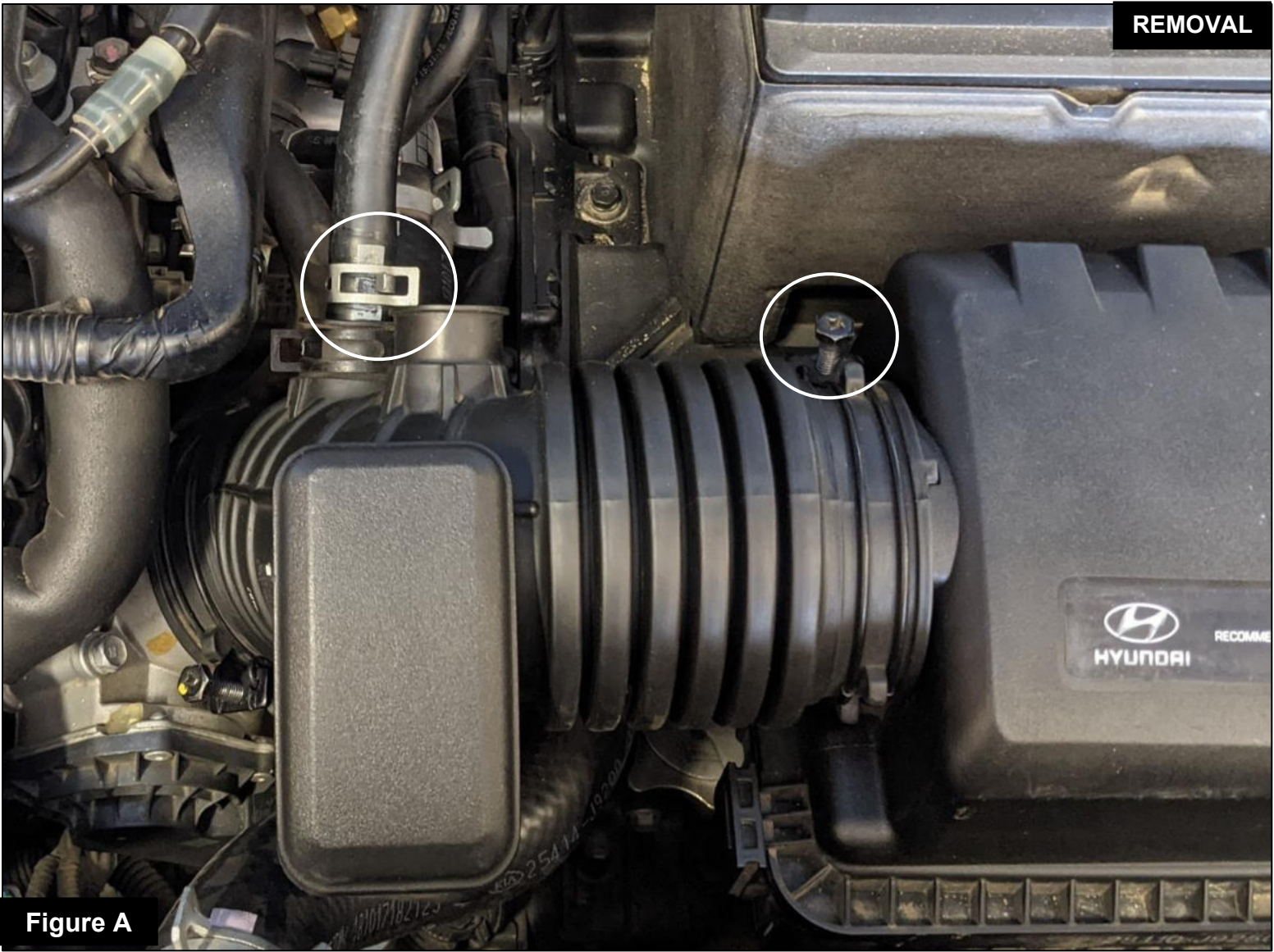
Installation will require the following tools:

8mm,10mm, and 11mm socket, extension, ratchet, 16mm wrench, pliers and flat-head screwdriver

Warranty Information available at: <https://afepower.com/contact#warranty>

Emissions Disclaimer: This product is not currently CARB exempt and is not available for purchase in California or for use on any vehicle registered with the California Department of Motor Vehicles.



**Figure A****Refer to Figure A for Steps 1-2**

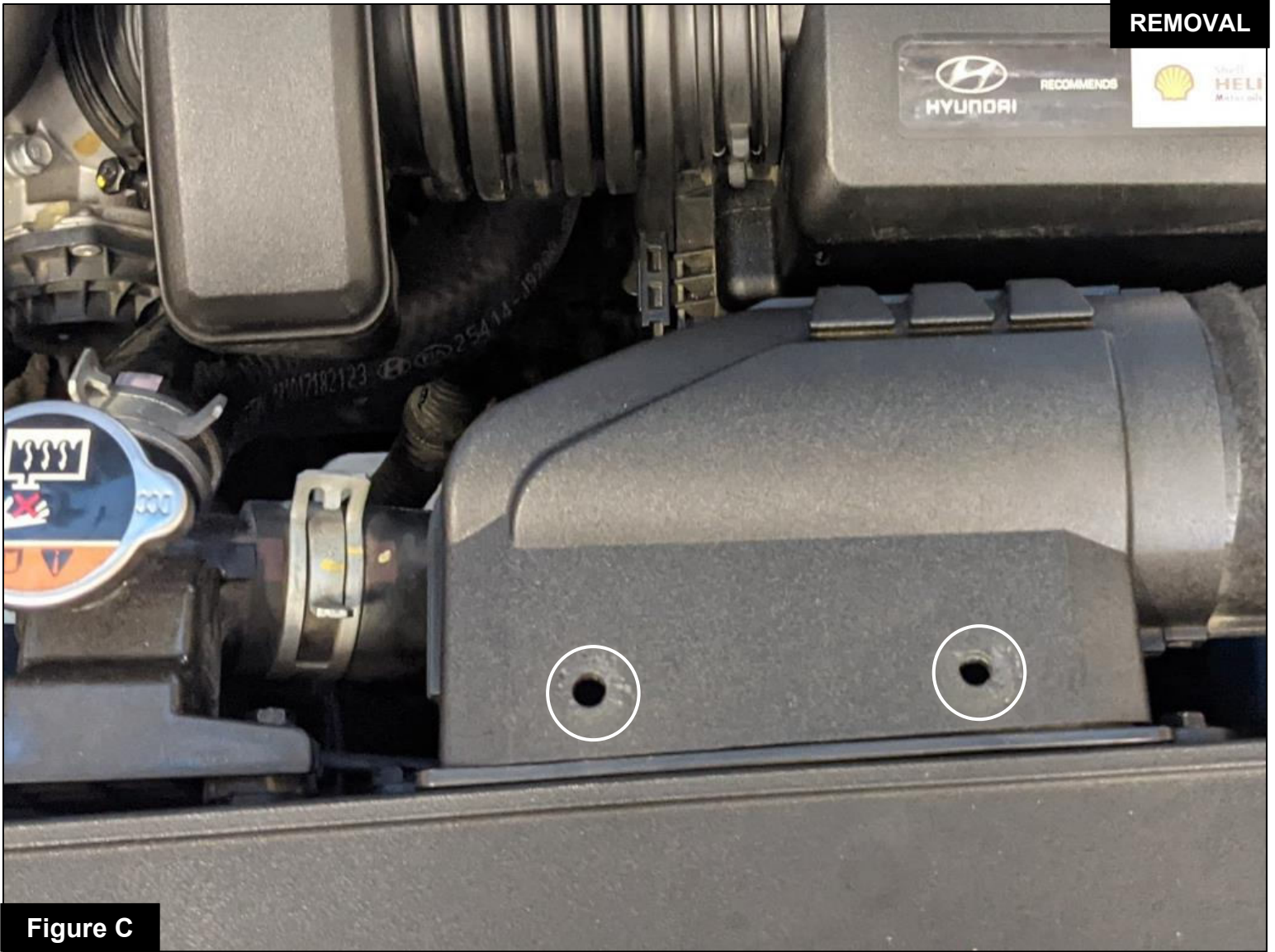
Step 1: Using pliers, open the clamp securing the hose to the air intake tube, and then slide the clamp away from the intake tube. This clamp will be re-used.

Step 2: Loosen the clamp securing the factory intake tube to the factory air box with a 10mm socket or screwdriver.



Refer to Figure B for Step 3

Step 3: Loosen the clamp at the throttle body using a 10mm socket and ratchet, or a screwdriver.

**Figure C****Refer to Figure C for Step 4**

Step 4: Remove the two plastic rivets connecting the factory air inlet to the front of the car. Use a screwdriver to gently press down on the center of the rivet to unlock, and then pull them out. These plastic rivets will be replaced. Gently pull up on the scoop to remove it.

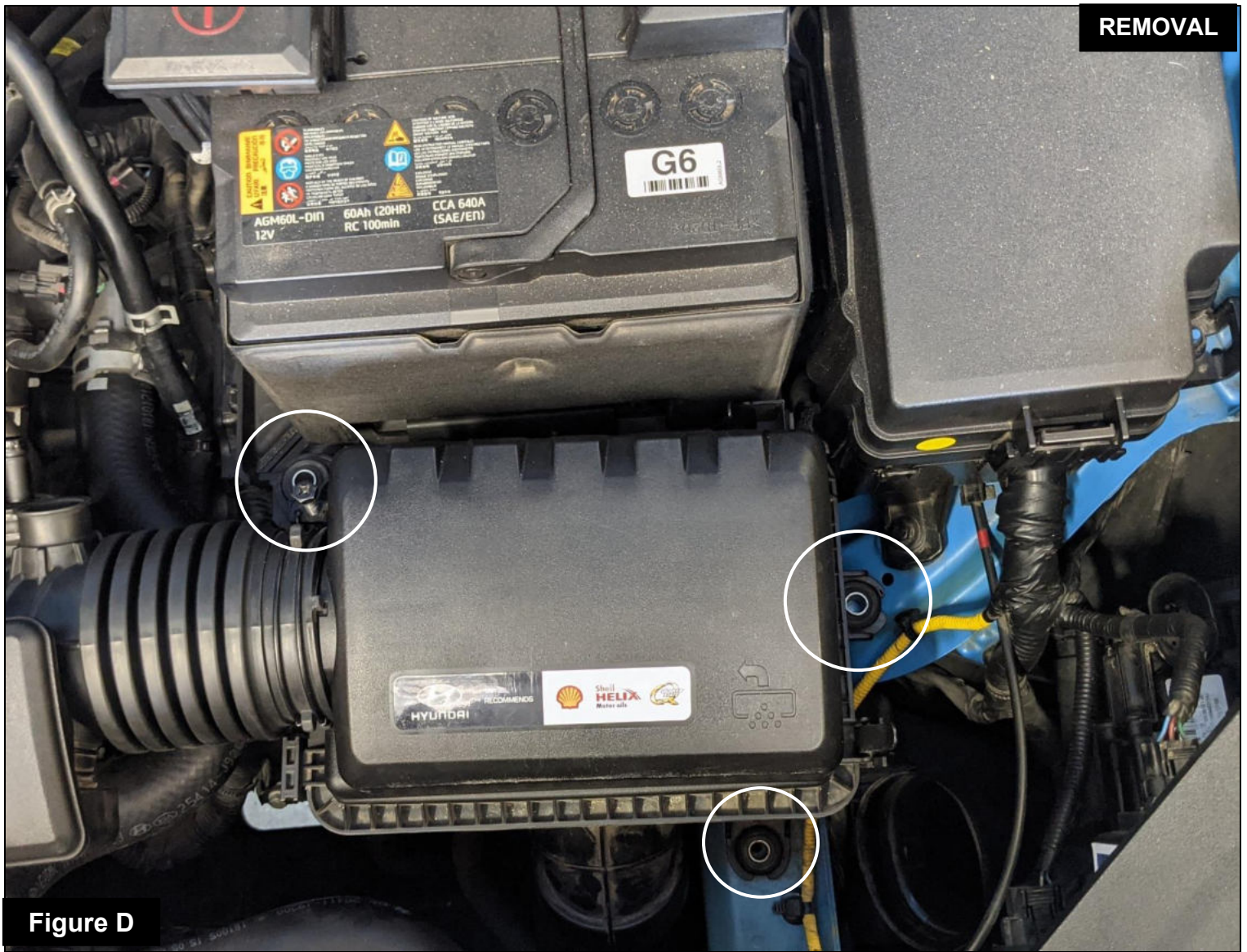


Figure D

Refer to Figure D for Steps 5-7

Step 5: With a 10mm socket, extension and ratchet, loosen the three screws securing the factory housing to the vehicle. These screws will be re-used during the installation of the Takeda air intake system.

Step 6: Remove the factory intake tube and disconnect the breather line from Step 1.

Step 7: Remove the factory housing and air inlet as one piece out of the vehicle by pulling up.

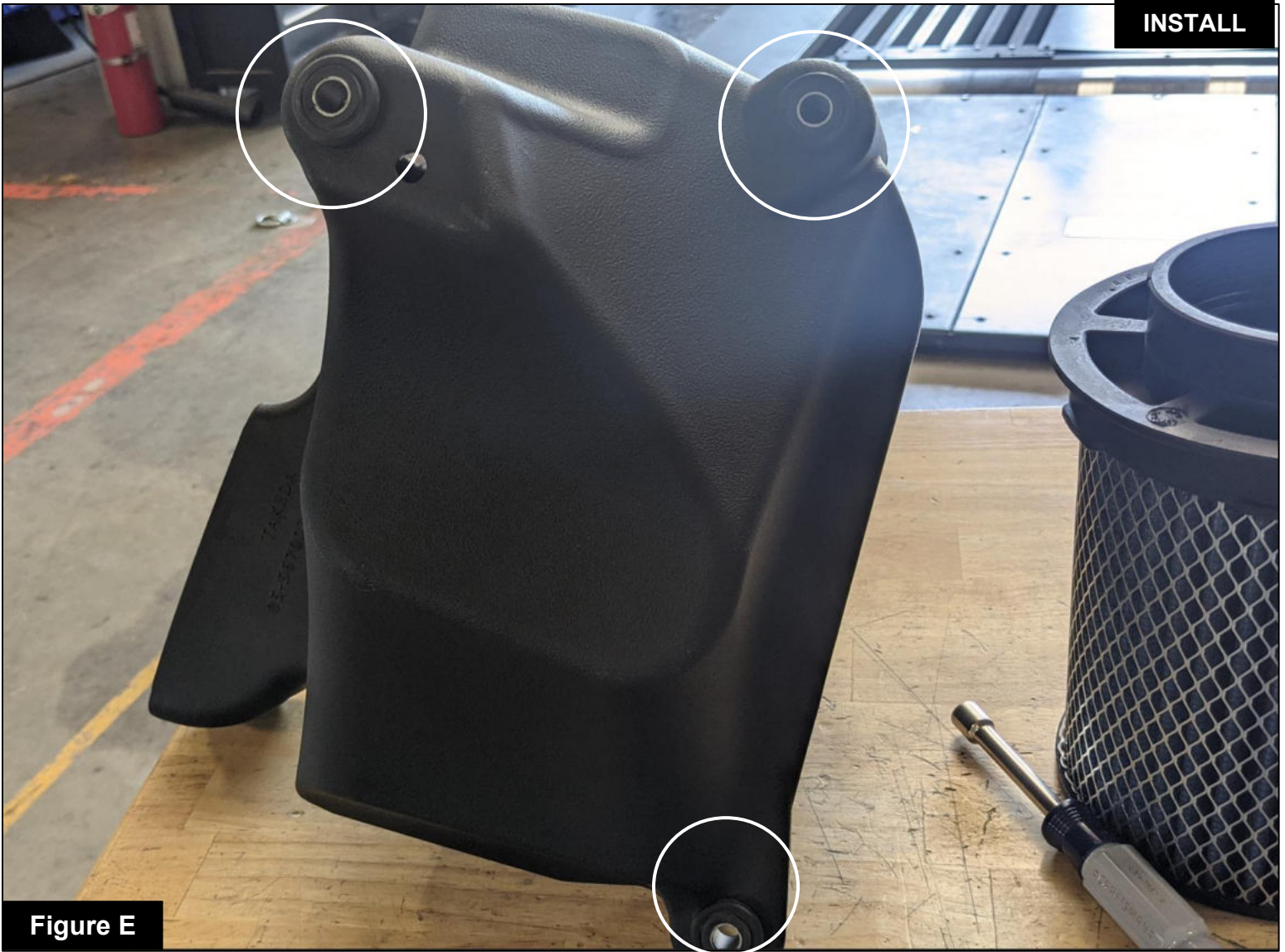


Figure E

Refer to Figure E for Step 8

Step 8: Transfer the mounting grommets and metal sleeves from the bottom of the factory housing to the Takeda housing.

**Figure F****Refer to Figure F for Steps 9-11**

Step 9: Install the Takeda housing into the vehicle. Two mounting points must be secured from the inside.

Secure it with two of the three screws removed at Step 5.

Step 10: The third mounting point installs from the outside, to the battery tray.



Figure G

Refer to Figure G for Step 11

Step 11: Install the air filter into the housing by firmly pushing it into the housing until the filter tabs lock it into place.

INSTALL



Figure H

Refer to Figure H for Step 12

Step 12: Using a 16mm wrench, install the aluminum fitting into the Takeda air intake tube.

Note: These are NPT fittings, the small gap between the 16mm hex and the tube is normal.



Figure I

Refer to Figure I for Steps 13-16

Step 13: Place the filter clamp over the filter flange, but do not tighten at this time.

Step 14: Install the coupling by sliding the small end onto the throttle body, as shown.

Step 15: Tighten the smaller No. 44 clamp over the coupling and throttle body, so that the clamp is snug.

This is to prevent the coupling from moving off the throttle body in the following steps.

Step 16: Slip the other No. 52 clamp over the larger end of the elbow coupling. Do not tighten it at this time.

**Figure J****Refer to Figure J for Steps 17-19**

Step 17: Install the Takeda intake tube by inserting the smaller end into the coupling.

Step 18: Line up the Takeda intake tube with the filter flange, and insert the larger tube end into the filter.

Step 19: Tighten the No. 52 clamp over the coupling and the Takeda intake tube, again, only until it is snug.

**Figure K****Refer to Figure K for Steps 20-21**

Step 20: Make sure to align the Takeda intake tube, air filter and coupling then tighten all clamps.

Step 21: Connect the small rubber hose, from Step 1, to the aluminum fitting on the tube. Secure it with the factory pry clamp.



Figure L

Refer to Figure L for Steps 22-23

Step 22: Secure the housing inlet using the two provided push clips.

Step 23: Make sure all clamps and connections are secured. Your installation is now complete. Thank you for choosing Takeda USA!

NOTE: Check all screws, clamps, and connectors are secure after 100-200 miles.



advanced FLOW engineering, inc.

252 Granite Street Corona, CA 92879

<https://afepower.com/contact>