

**advanced FLOW engineering** Takeda Momentum Cold Air Intake System

**Instruction Manual** P/N: 56-70043D / 56-70043R

Make: Subaru

Model: Impreza

Year: 2012-2016

Engine: H4-2.0L



- Please read the entire instruction manual before proceeding.
- Ensure all components listed are present.
- If you are missing any of the components, call customer support at 951-493-7100.
- Ensure you have all necessary tools before proceeding.
- Do not attempt to work on your vehicle when the engine is hot.
- Retain factory parts for future use.

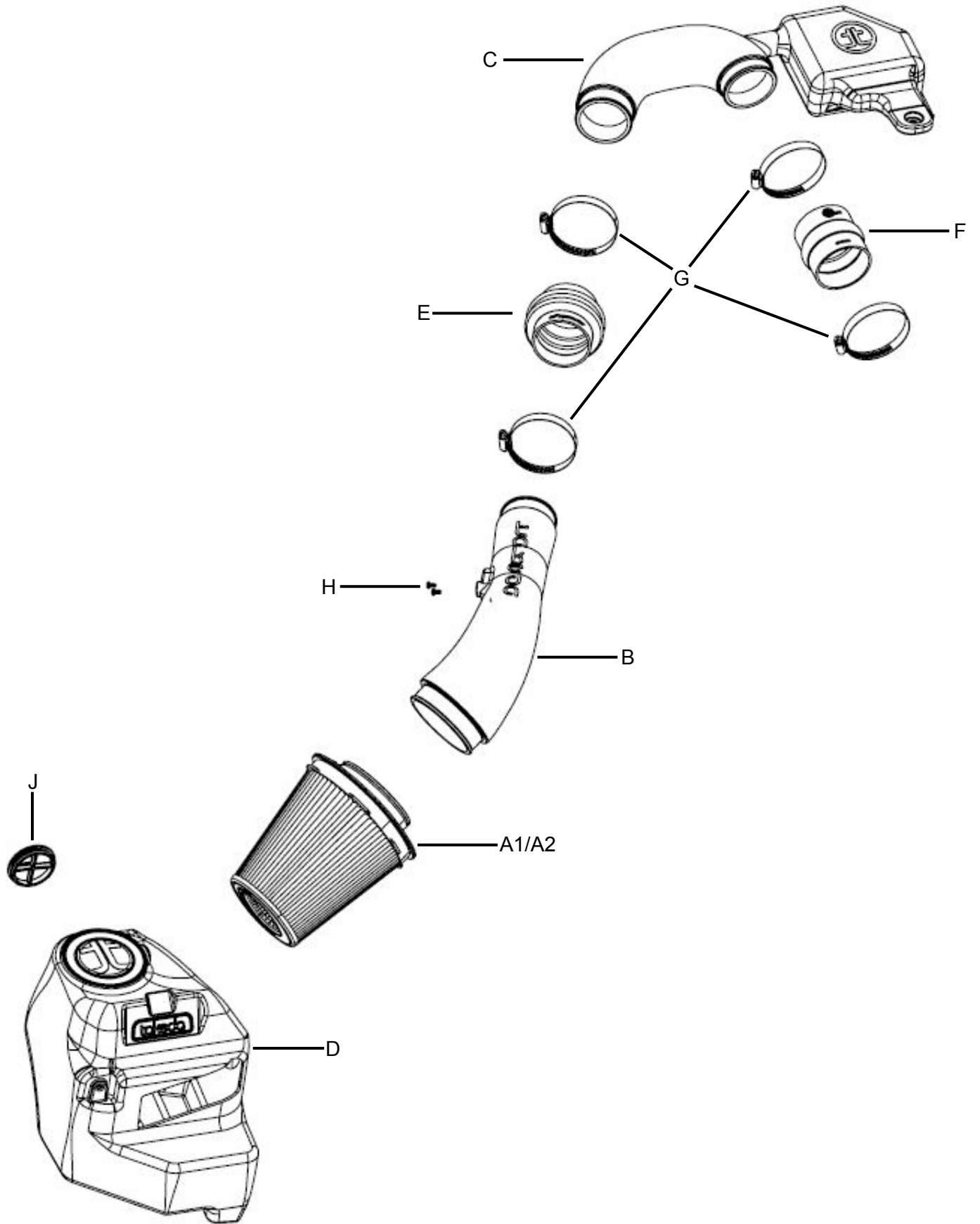
Label	Qty.	Description	Part Number
A1	1	Air Filter (Pro 5R)	R24-90101
A2	1	Air Filter (Pro DRY S)	R21-90101
B	1	Tube 1 of 2	05-5670039B1
C	1	Tube 2 of 2	05-5670039B2
D	1	Housing	05-5670043B3
E	1	Coupling, Silicone Bellows: 2-3/4"ID x 3"L	05-01656
F	1	Coupling, Silicone Hump: 2-3/4"ID x 3"L	05-01501
G	4	Clamp 044	03-50019
H	2	Screw, Torx: M4	03-50491
J	1	Takeda Plug	05-01527

**Installation will require the following tools:**

Flat head screwdriver (or panel clip removal tool), #2 Philips screwdriver, T20 Torx driver, pliers, 10mm wrench, 7mm, 8mm, and 10mm nut drivers.

Warranty Information available at <https://afepower.com/contact#warranty>

**Emissions Disclaimer:** This product is not currently CARB exempt and is not available for purchase in California or for use on any vehicle registered with the California Department of Motor Vehicles.



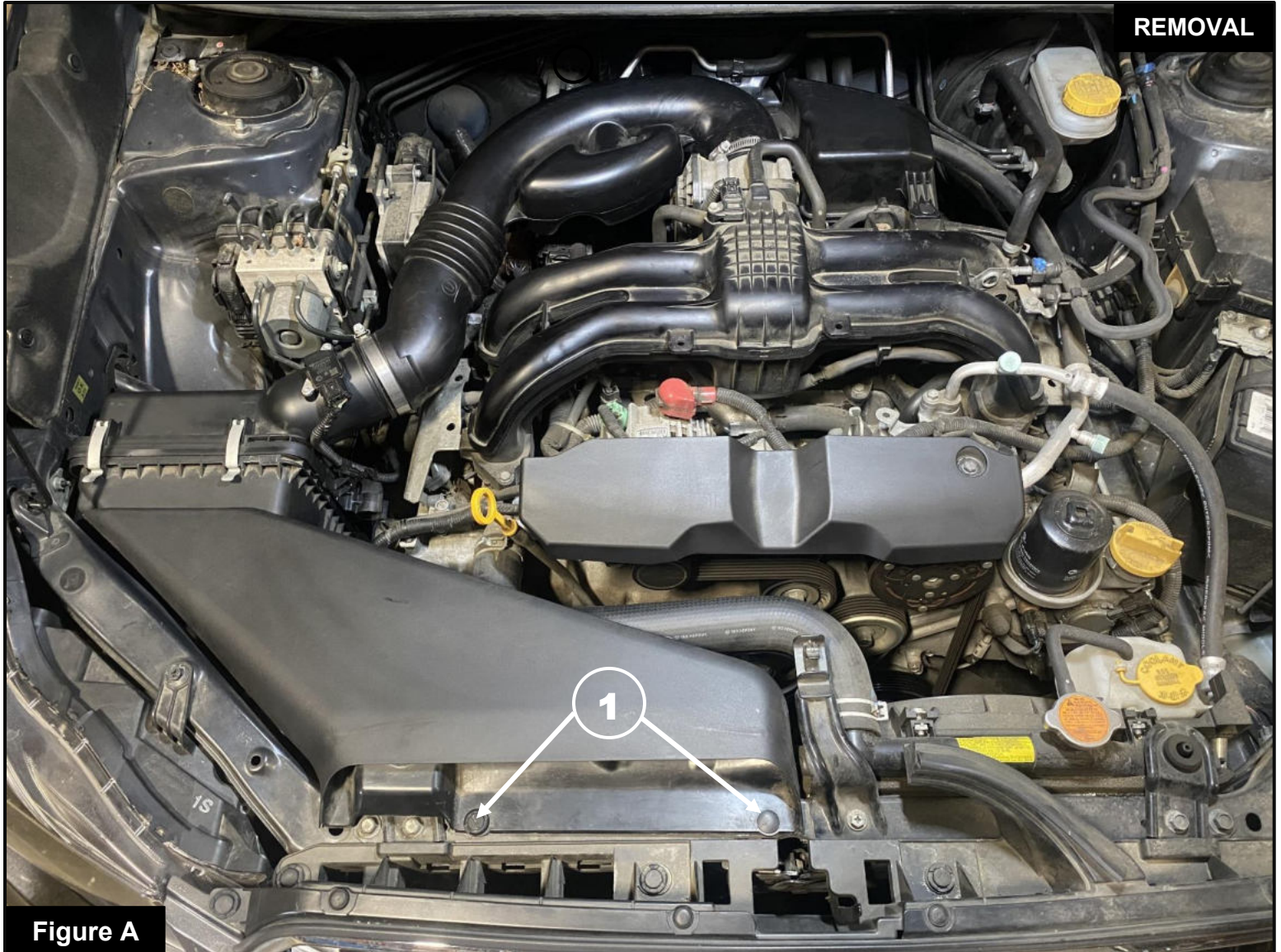
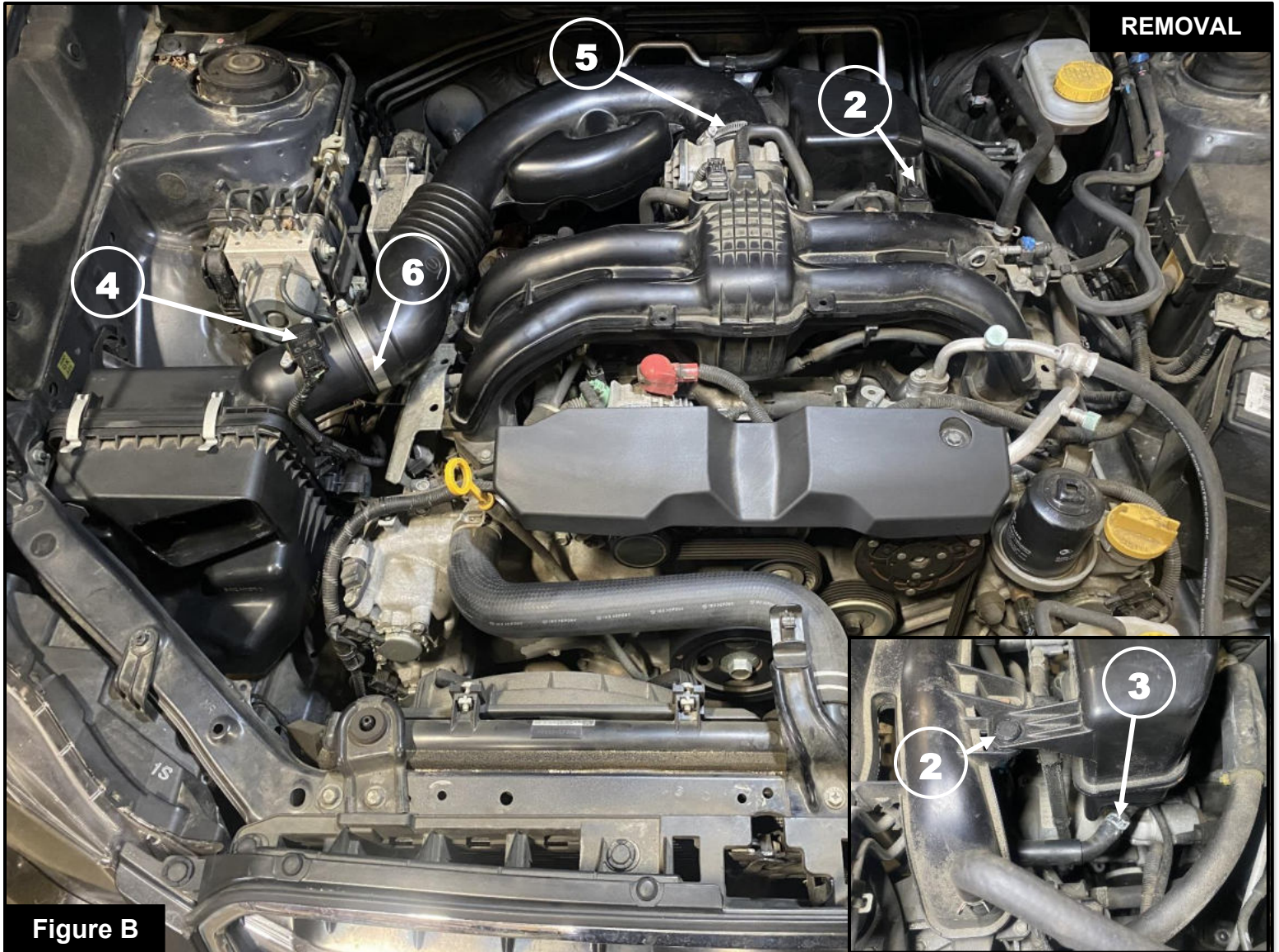


Figure A

**Refer to Figure A for Steps 1-2**

Step 1: Using a flat head screwdriver or panel clip removal tool, remove the two panel clips ① holding on the air scoop.

Step 2: Remove the air scoop from the vehicle and set aside.



**Figure B**

**Refer to Figure B for Step 3-6**

Step 3: Using a flat head screwdriver or panel clip removal tool, remove the panel clip (2) from the intake tube mount.

Step 4: Using a pair of pliers, squeeze the spring clamp (3) and remove the crankcase vent hose from the intake tube.

Step 5: Disconnect the Mass Air Flow (MAF) sensor harness (4).

Step 6: Using a 7mm nut driver, loosen the clamps at the throttle body (5) and at the airbox (6). Remove the intake tube from the vehicle.

**Figure C****Refer to Figure C for Steps 7-9**

Step 7: Using a 10mm nut driver, remove the screw (7) from the airbox mount. Set aside screw for later use.

Step 8: Using a 10mm wrench, remove the nut (8) from the airbox bushing mount.

Step 9: Lift up on the airbox and remove from the vehicle.


**Figure D**

### **Refer to Figure D for Step 10-11**

Step 10: Locate the mounting grommet (9). Remove the grommet by pushing out the steel insert and removing the rubber grommet from the airbox. Set aside the steel insert and bushing for later use.

Step 11: From the inside of the airbox using a 10mm nut driver, remove the nut (10) holding on the mounting bushing to the airbox. Set aside the mounting bushing and bolts for later use.

\*NOTE: Make sure to pay attention to the orientation of the tabs on the mounting bushing. This will be needed for step 13. (Tab facing you should be at the 3 o'clock position)


**Figure E**

**Refer to Figure E for Step 12-13**

Step 12: Install the grommet and steel insert (11) removed in step 10 onto the bottom of the Takeda housing in the location shown above.

Step 13: Install the mounting bushing (12) removed in step 11 onto the Takeda housing in the location shown above.

\*NOTE: Make sure to match the orientation of the tabs on the mounting bushing as it was removed from the airbox in step 11. (Tab facing you should be at the 3 o'clock position)



**Refer to Figure F for Steps 14-17**

Step 14: Install the Takeda housing into the vehicle.

Step 15: Using a 10mm nut driver, install the screw (13) through the bushing on the bottom of the housing and into the threaded mount on the vehicle's frame.

Step 16: Using a 10mm wrench, install the nut (14) removed in step 8.

Step 17: Install the aFe POWER Air Filter and hose clamp into the Takeda airbox.


**Figure G**
**Refer to Figure G for Steps 18-20**

Step 18: Install the bellows coupler (05-01656) and clamp (#044) (15) onto the B2 tube as shown in the image above.

Step 19: Install the silicone hump coupler (05-01501) and clamp (#044) (16) onto the B2 tube as shown in the image above.

Step 20: Slip a clamp (#044) over the exposed end of the bellows coupler and another clamp (#044) over the exposed end of the silicone hump coupler (17).

**Figure H****Refer to Figure H for Steps 21-23**

Step 21: Install the B2 tube onto the throttle body and tighten the clamp.

Step 22: Install the panel clip (18) removed in step 3.

Step 23: Install the crank case vent hose (19) removed in step 4.

**Figure I****Refer to Figure I for Steps 24-25**

Step 24: Using a #2 Phillips screw driver, remove the MAF sensor from the airbox (20).

Step 25: Using a T20 torx driver, install the MAF sensor onto the Takeda B1 intake tube with the provided M4 screws (21).


**Figure J**

**Refer to Figure J for Steps 26-27**

Step 26: Install the B1 intake tube into the bellow coupler (22) , but do not tighten clamp yet.

Step 27: Install the other end of the B1 intake tube into the air filter. Align the tube and tighten the clamps using an 8mm nut driver.

**Figure K****Refer to Figure K for Steps 28-29**

Step 28: Re-connect the MAF sensor (23) removed in step 5.

Step 29: Install the factory air scoop and panel clips (24) removed in steps 1 and 2. Your installation is now complete. Thank you for choosing Takeda USA!

**NOTE: Check all screws, clamps, and connectors are secure after 100-200 miles**



Page Left Blank Intentionally



***advanced FLOW engineering, inc.***

252 Granite Street Corona, CA 92879  
TEL: 951.493.7100 • TECH: 951.493.7185  
E-Mail: [Tech@aFepower.com](mailto:Tech@aFepower.com)