

advanced FLOW engineering

Instruction Manual P/N: 57-10006D/ 57-10006R

Make: **BMW** Model: **M3 (F80)**

Year: **2015-2019**

Engine: **L6-3.0L (tt) S55**

Make: **BMW** Model: **M4 (F82/F83)**

Year: **2015-2019**

Engine: **L6-3.0L (tt) S55**

Make: **BMW** Model: **M2 Comp(F87)**

Year: **2019**

Engine: **L6-3.0L (tt) S55**



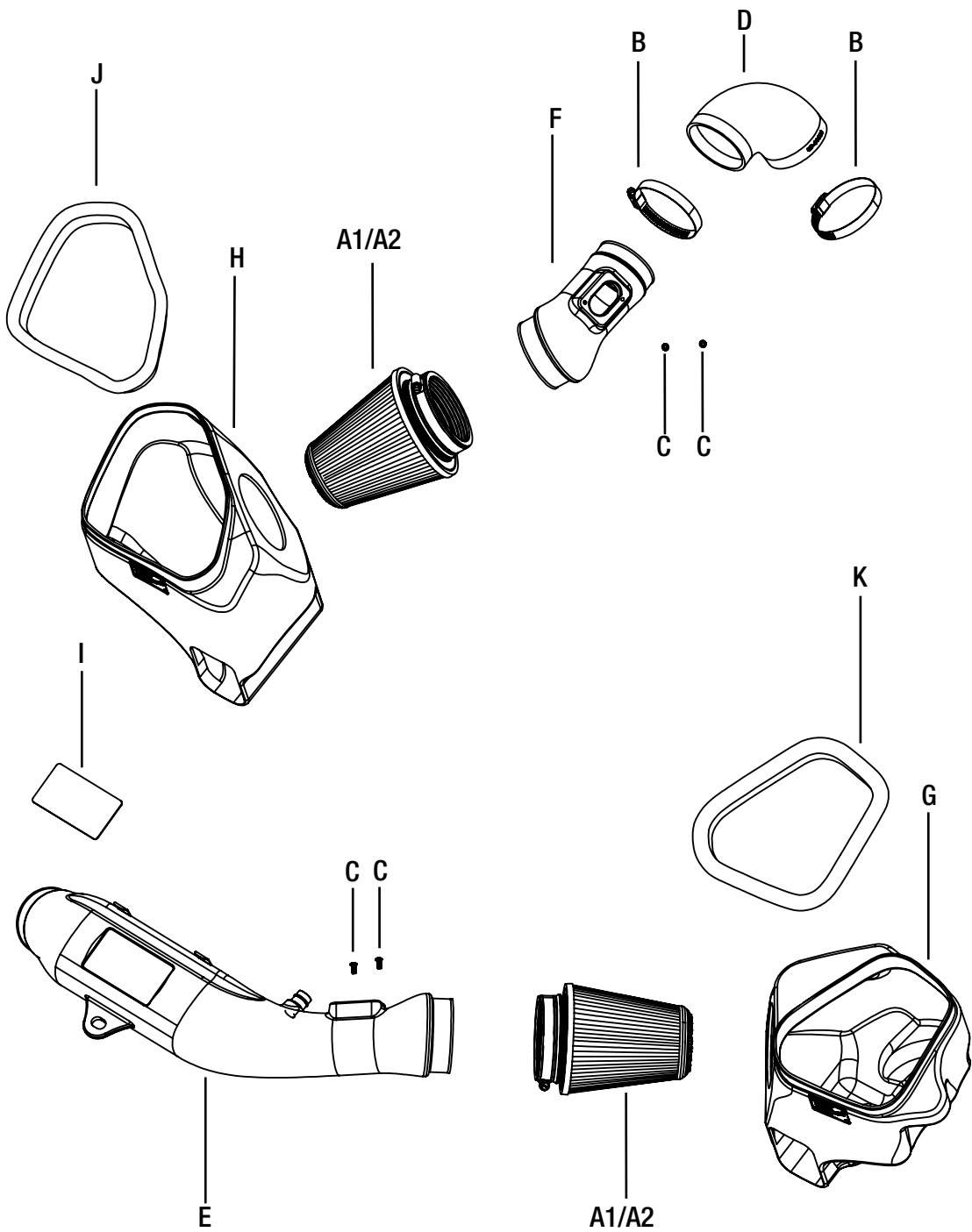
- Please read the entire instruction manual before proceeding.
- Ensure all components listed are present.
- If you are missing any of the components, call customer support at 951-493-7100.
- Ensure you have all necessary tools before proceeding.
- Do not attempt to work on your vehicle when the engine is hot.
- Disconnect the negative battery terminal before proceeding.
- Retain factory parts for future use.

Label	Qty.	Description	Part Number
A1	2	Air Filter (Pro DRY S For 57-10006D)	21-91145
A2	2	Air Filter (Pro 5R For 57-10006R)	24-91145
B	2	Clamp 2-9/16" - 3-1/2"	03-50007
C	4	Screw, Torx M4x0.7x10	03-50490
D	1	Coupling, Silicone Elbow	05-01334
E	1	Tube, Carbon Fiber: Driver Side	05-76305C1
F	1	Tube, Carbon Fiber: Passenger Side	05-76305C2
G	1	Housing, Driver Side	05-5413032B1
H	1	Housing, Passenger Side	05-5413032B2
I	1	Emblem, Track Series	06-00210
J	1	Seal, Trim (26.5" Long)	05-01507
K	1	Seal, Trim (24" Long)	05-01507

Tools required: 7mm, 8mm & 10mm Nut Driver, 1/4" Ratchet, 10mm Socket, 13mm Wrench, T20 Driver, Flathead Screw Driver, Pliers.

Warranty Information available at: <https://afepower.com/contact#warranty>

Note: Legal in California for use on race vehicles only. The use of this device on vehicles used on public streets or highways is strictly prohibited in California and others states that have adopted California emission regulations.



**Figure A****Refer to Figure A for Steps 1-3**

- Step 1: Remove the push clip (1) on the driver and passenger side windshield cover.
- Step 2: Unlock the three 10mm plastic nuts (2) retaining the windshield covers on the driver and passenger side.
- Step 3: Remove the windshield covers (3) on the driver and passenger side.



Figure B

Refer to Figure B for Steps 4-5

Step 4: Remove the 8 bolts (4) securing the carbon fiber strut brace. Remove 10mm bolt (5) securing strut bar to reservoir.

Step 5: Remove the carbon fiber front strut brace.



Refer to Figure C for Steps 6-8

Step 6: Disconnect the MAF sensor (6) on driver side intake tube.

Step 7: Disconnect vacuum line (7) and unclip coolant hose routed on top of intake tube.

Step 8: Loosen clamp at turbo and unclip tube from front mounting bracket, then pull the full driver side intake system out of the vehicle. Remove the small rubber gasket (8) on the front mounting bracket.

**Figure D****Refer to Figure D for Steps 9-11**

Step 9: Disconnect the MAF sensor (9) on the passenger side air box.

Step 10: Loosen the clamp between the air box and the 90 degrees tube. Pull the air box out of the vehicle.

Step 11: Loosen the clamp between the 90 degrees tube and the turbo inlet tube. Remove the 90 degrees tube out of the vehicle.

**Figure E****Refer to Figure E for Steps 12-13**

- Step 12: Install both air filters inside the aFePower housings. Push them through the holes from the inside until they lock in place. Install clamps on the filter ends but do not tighten at this time.
- Step 13: Install the seal trim on the top edge of the aFePower housings. The shorter seal trim goes on the driver side housing.



Figure F

Refer to Figure F for Steps 14-15

Step 14: Install driver side aFePower housing into the vehicle. Push it firmly into the factory mounting grommets.

Step 15: Transfer factory mounting grommet ⑩ from bottom of passenger side factory housing to the bottom of the aFePower housing. Install the passenger side housing onto the vehicle. Orient the mounting grommet at the bottom correctly to make sure it secures over the sheet metal. Then push the housing firmly into the other factory mounting grommet.



Figure G

Refer to Figure G for Steps 16-17

Step 16: Transfer driver side MAF sensor from the factory air box to the long aFePower tube. Secure it with the furnished M4 black screws.

Step 17: Place the Track Series Emblem into the recess location on the tube.

**Figure H****Refer to Figure H for Steps 18-21**

Step 18: Install the driver side aFePower tube in the vehicle. Slide the tube end into the factory turbo inlet tube then the other end into the filter.

Step 19: Clip the aFePower tube to the factory mounting bracket at the front of the car. Align tube correctly then tighten clamps on both ends.

Step 20: Connect the vacuum line to the aluminum fitting. Re-connect the MAF sensor harness.

Step 21: Place the coolant hose onto the tube.

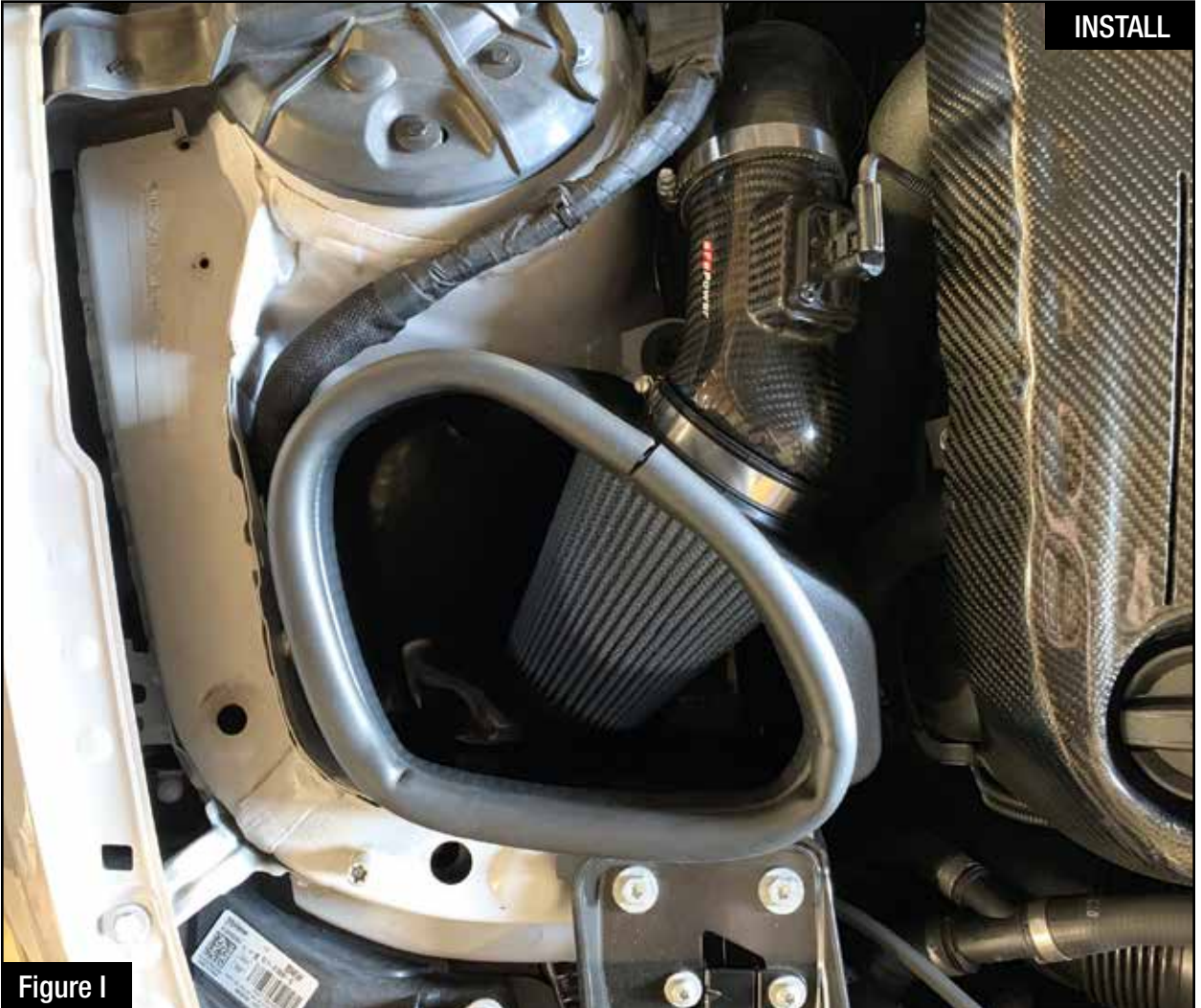


Figure I

Refer to Figure I for Steps 22-25

Step 22: Transfer the passenger side MAF sensor to the short aFePower tube.

Step 23: Install the 90 degrees furnished coupling over turbo inlet tube. Install clamps but do not tighten at this time.

Step 25: Install short aFePower tube into vehicle. Slide small end into coupling then other end into filter. Align tube correctly then tighten all clamps.

Step 25: Reconnect MAF sensor harness.



Figure J

Refer to Figure J for Steps 26-28

Step 26: Re-install the carbon fiber strut brace and bolts. Tighten them firmly. Make sure not to lock or squeeze the hood cable. Re-install windshield covers and clips.

Step 27: Make sure all clamps and screws are tight.

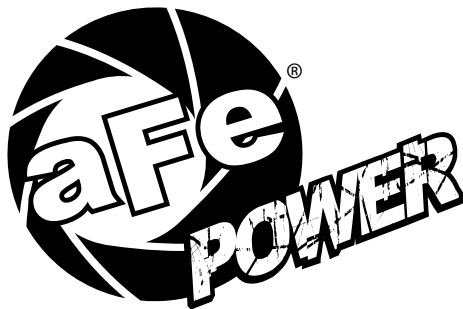
Step 28: Your installation is now complete. Thank you for choosing aFePower.

*Verify all connections are secure 100-200 miles after installation



PAGE LEFT BLANK INTENTIONALLY

PAGE LEFT BLANK INTENTIONALLY



advanced FLOW engineering, inc.
252 Granite Street Corona, CA 92879
TEL: 951.493.7100 • TECH: 951.493.7134
E-Mail: Tech@aFepower.com